



Town of Amherst


# Waterfront Planning



## Local Waterfront Revitalization Program (LWRP)

December 3, 2018

# Meeting Agenda.....

- I. What is an LWRP?
  - II. Purpose - Why are we doing an LWRP?
  - III. What is included in an LWRP?
    - Boundary
    - Outreach Plan
    - Inventory
    - Projects
  - IV. What has been done so far?
    - Tours
    - Mapping
  - V. Photos of Preliminary LWRP Boundary area
  - VI. Questions / Participation Exercise
- 

# What is an *LWRP* ?

A program sponsored by the NYS Department of State

A comprehensive land and water use plan that:

- ❖ Formalizes the community's vision for its waterfront
- ❖ Provides a structure for carrying out waterfront projects



# ***LWRP Communities in Western New York***

Brant (T)	1988	Grand Island (T)	2006
North Tonawanda (C)	1988	Tonawanda (T)	2008
Lackawanna (C)	1989	Lewiston (V)	2011
Youngstown (V)	1990	Chautauqua Lake Area	2011
Tonawanda (C)	1993	Hamburg (T)	2012
Newfane (T)	1998	Evans (T)	2013
Middleport (V)	2003	Wheatfield (T)	2014
Somerset (T)	2005		





Why are we doing an  
LWRP?



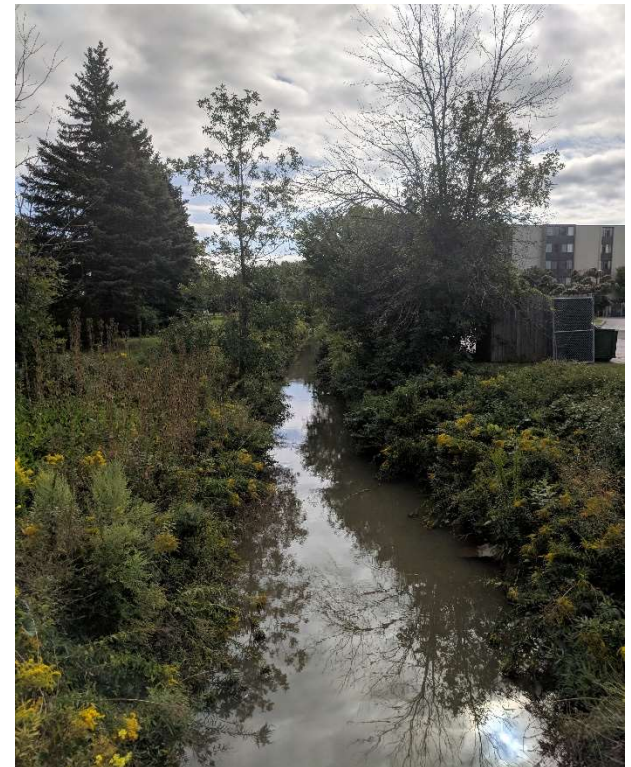
# *Purpose of an LWRP*

- Identify waterfront projects
- Obtain funding for waterfront projects
- Improve public access to the waterfront
- Address water quality issues
- Provide or upgrade recreational amenities
- Improve aesthetics
- Encourage active or passive recreation
- Assist in fostering improved healthy lifestyles
- Ensure additional level of review for projects within waterfront boundary



# *Benefits of an Amherst LWRP*

- Enable Amherst to make the most of its water resources by:
  - Identifying specific projects that address specific needs
  - Using the waterfront as a catalyst for revitalization
  - Fostering improved healthy lifestyles
- Enhance waterfront areas to beautify the Town
- Enable Amherst residents to know and respect the Town's heritage
- Ensures that all governmental activities (state, federal) must be consistent with an adopted LWRP

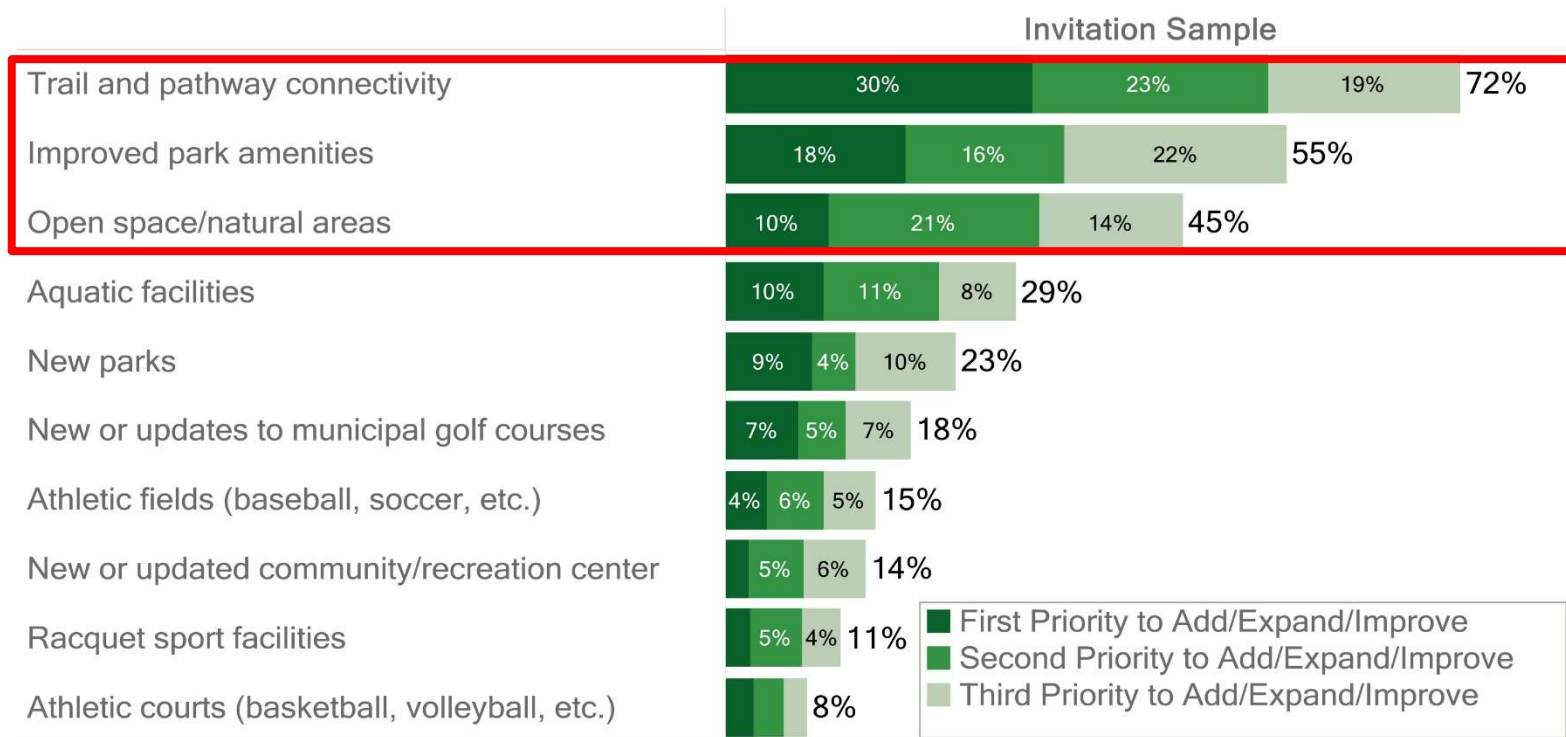


# Town Recreation & Parks Master Plan



## IMPORTANCE OF ADDING, EXPANDING AND IMPROVING

### Top Three Highest Priorities to be Added, Expanded, or Improved



Source: RRC Associates and GreenPlay

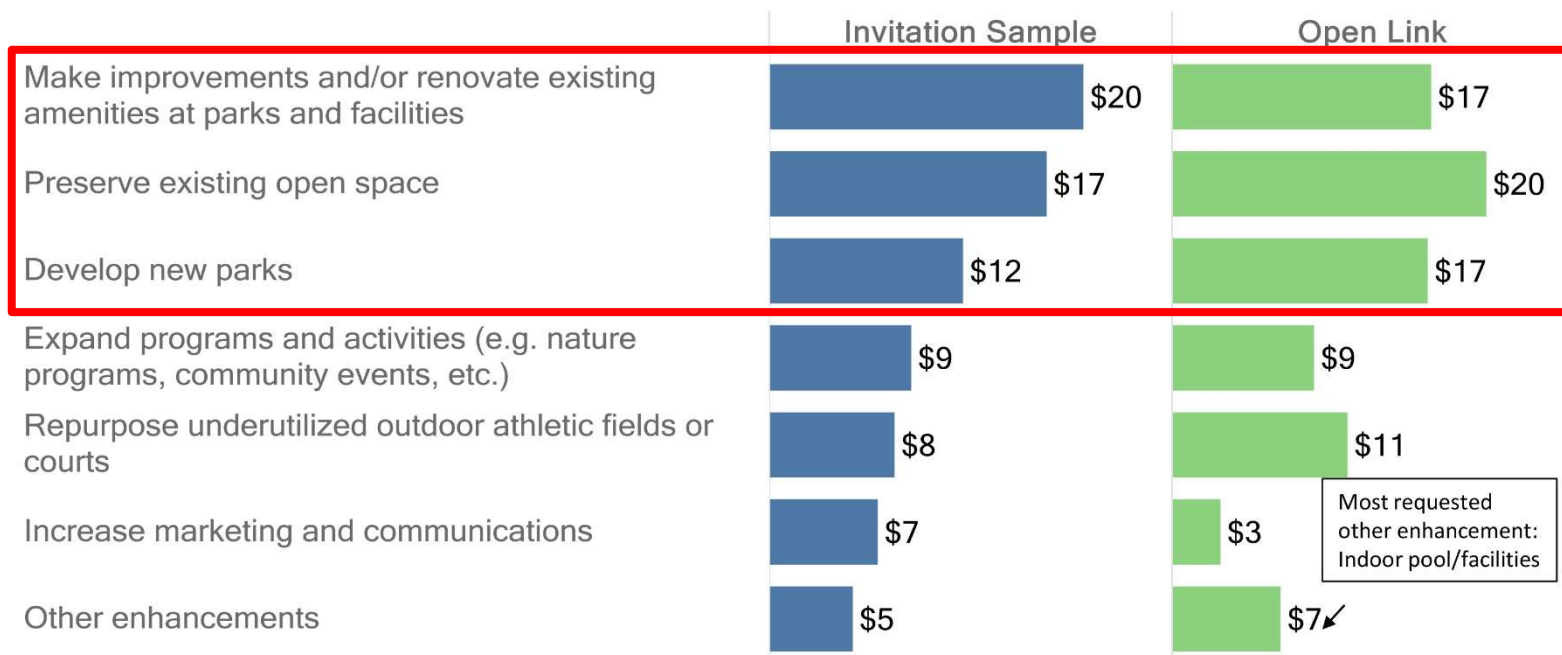
**RRC**  
ASSOCIATES

# Town Recreation & Parks Master Plan

## ALLOCATION OF \$100

If you had \$100 to spend on parks and recreation facilities, services and/or programs, how would you allocate that \$100 across the following categories?

### Average Allocation Amount



Source: RRC Associates and GreenPlay

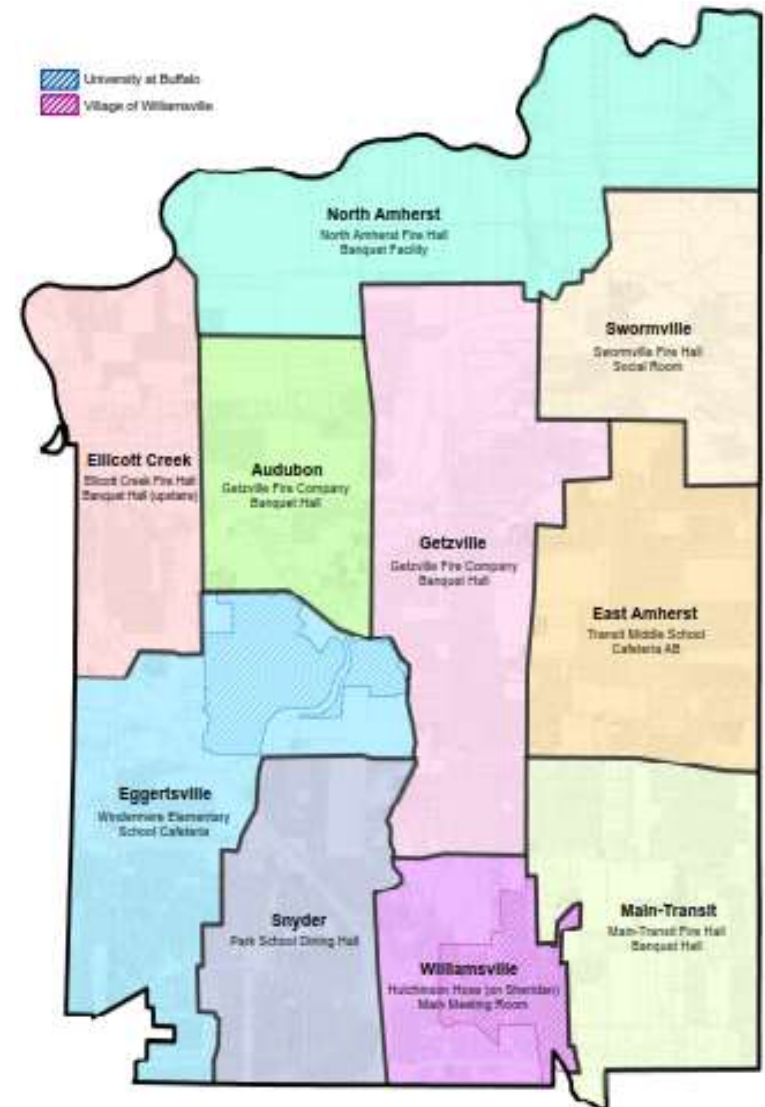
**RRC**  
ASSOCIATES.



# Neighborhood Forums

## Spring 2018

- 10 Neighborhood Forums held in April & May  
438 participants
- Neighborhoods were derived from Fire District boundaries (see map)
- Gathered comments and input regarding resident likes and desires in their neighborhoods now and for the future
- Other Meetings:
  - Attended 2 ice cream social events at Windermere Elementary & Forest Elementary
  - Held a meeting with 9 YouthWork\$ youth/students to get their thoughts



# Neighborhood Forums

## Common Themes

**If you could change, implement or create ONE THING, what would it be?**

*(results from all 10 meetings)*

- More Bike Paths / Bike Lanes / Trail Connections
- Preserve / Protect Community Character
- Improve Walkability / Bikeability
- Preserve Greenspace and Trees
- More Parks and Recreation & Park Improvements
- Better Pedestrian Safety / Sidewalk Improvements





What's included in an  
LWRP?



# *LWRP Report Sections*

**Section 1** Waterfront Revitalization Boundary

**Section 2** Inventory & Analysis

**Section 3** Local Waterfront Revitalization Policies

**Section 4** Proposed Land & Water Uses & Proposed Projects

**Section 5** Techniques for Local Implementation  
of the Program

**Section 6** Federal and State Actions and Programs  
Likely to Affect Implementation of the LWRP

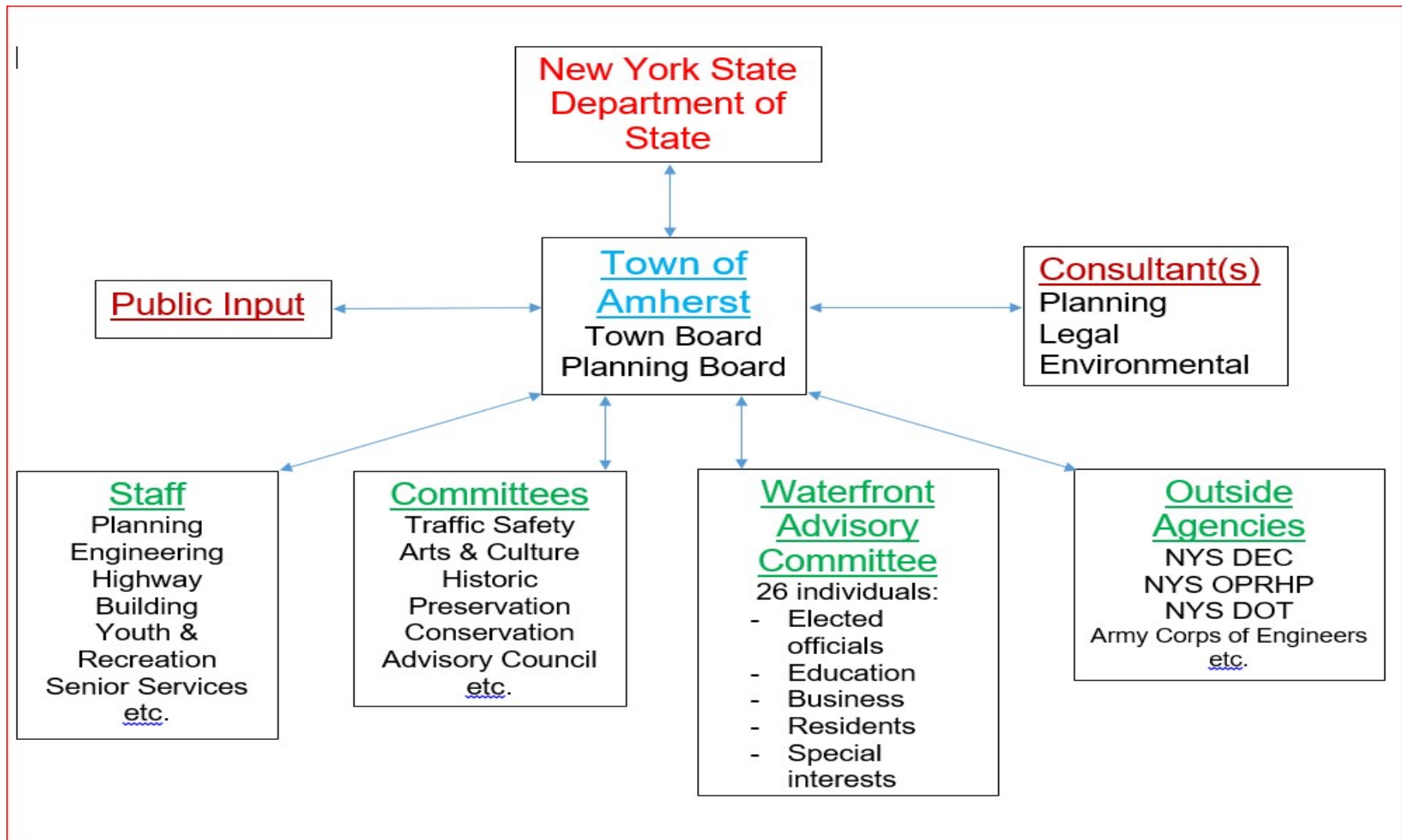
**Section 7** Local Commitment and Consultation



# LWRP Tasks & Schedule

	<b>LWRP Tasks</b>	<b>Estimated Completion</b>
✓	Task 1 - Project Initiation Meeting	April 2018
✓	Task 2 - Waterfront Advisory Committee	July 2018
	Task 3 - Procurement of Consultant	January 2019
	Task 4 - Consultant Selection & Compliance w/Local Procurement	January 2019
	Task 5 - Subcontract Preparation and Execution	January 2019
✓	Task 6 - Second Project Meeting	November 2018
✓	Task 7 - Preparation of Community Outreach Process & Plan	November 2018
✓	Task 8 - Draft Sect I - Waterfront Revitalization Area Boundary	December 2018
	Task 9 - Draft Sect II - Inventory and Analysis	December 2018
✓	<b>Task 10 - First Public Information Meeting</b>	<b>December 2018</b>
	Task 11 - Draft Sect III - Local Waterfront Revitalization Policies	April 2019
	Task 12 - Draft Sect IV - Proposed Land & Water Uses & Projects	May 2019
	Task 13 - Second Public Information Meeting	May 2019
	Task 14 - Draft Sect V - Techniques for Local Program Implement'n	June 2019
	Task 15 - Draft Sect VI - Fed/State Actions/Programs Affecting LWRP	June 2019
	Task 16 - Draft Sect VII - Local Commitment and Consultation	June 2019
	Task 17 - Determination of Significance & Compliance with SEQRA	June 2019
	Task 18 - Complete Draft LWRP	June 2019
	Task 19 - Third Public Information Meeting	June 2019
	Task 20 - Final LWRP	December 2019
	Task 21 - MWBE Reporting	December 2019
	Task 22 - Project Status Reports	December 2019
	Task 23 - Final Project Summary Report/Measurable Results forms	December 2019

# LWRP Roles & Responsibilities



LWRP  
Preliminary Boundary



# ***LWRP Boundary Criteria***

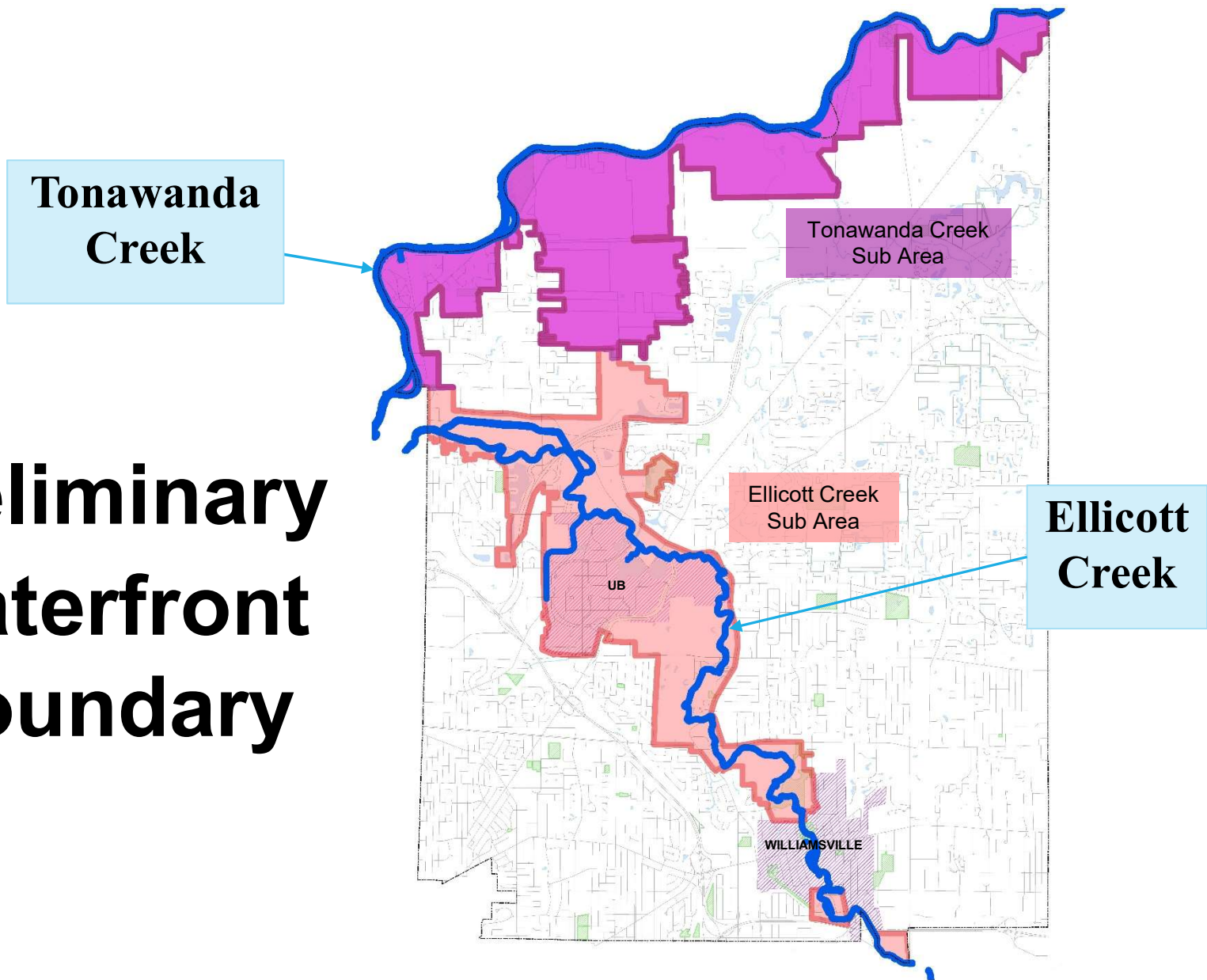
*Per NYS Guidebook “Making the Most of Your Waterfront”:*

- Follow **recognizable natural or cultural features** such as waterways, streets, and railroads to the greatest extent possible.
- Include **land uses that affect or are affected by waterfront issues, problems, and opportunities**.
- Include **natural and cultural resources with a physical, social, visual, or economic relationship** to the waterfront.
- Include **waterside boundaries**, generally following the waterside boundary of the municipality, which is located either at the water’s edge or at a specified distance out from the shoreline into the water.

The purpose of the boundary is to help define your area of study and to ensure that you are covering **all of the key features that will help define your waterfront**.

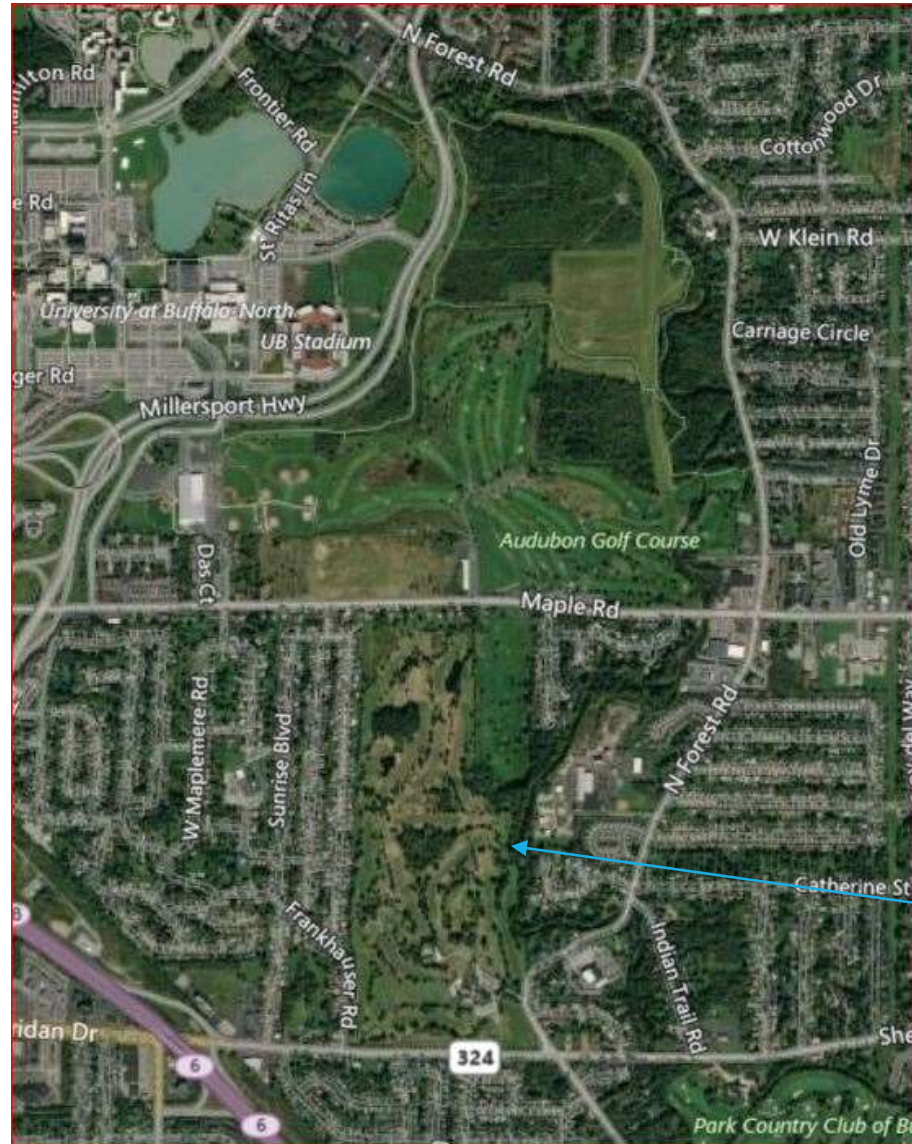


# Preliminary Waterfront Boundary



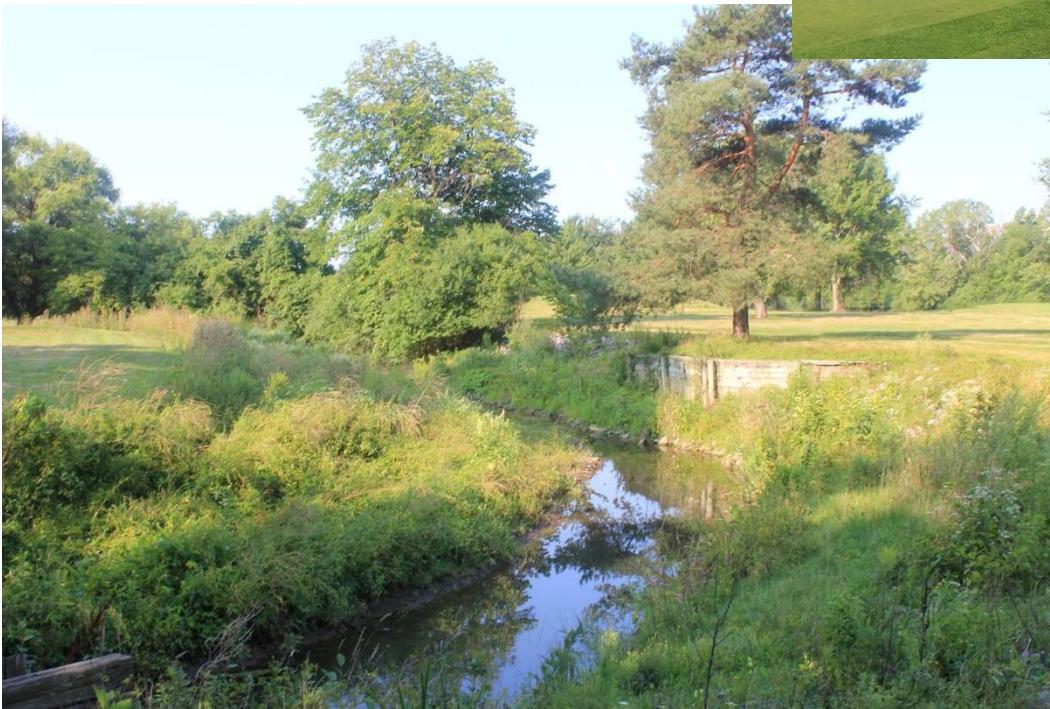


# “Amherst Central Park”



**Ellicott  
Creek**

*“Amherst  
Central  
Park” Area*



# Public Outreach

- ❖ Advertising
- ❖ Informational meetings
- ❖ Workshop
- ❖ Social media



# LWRP Process



# Inventory

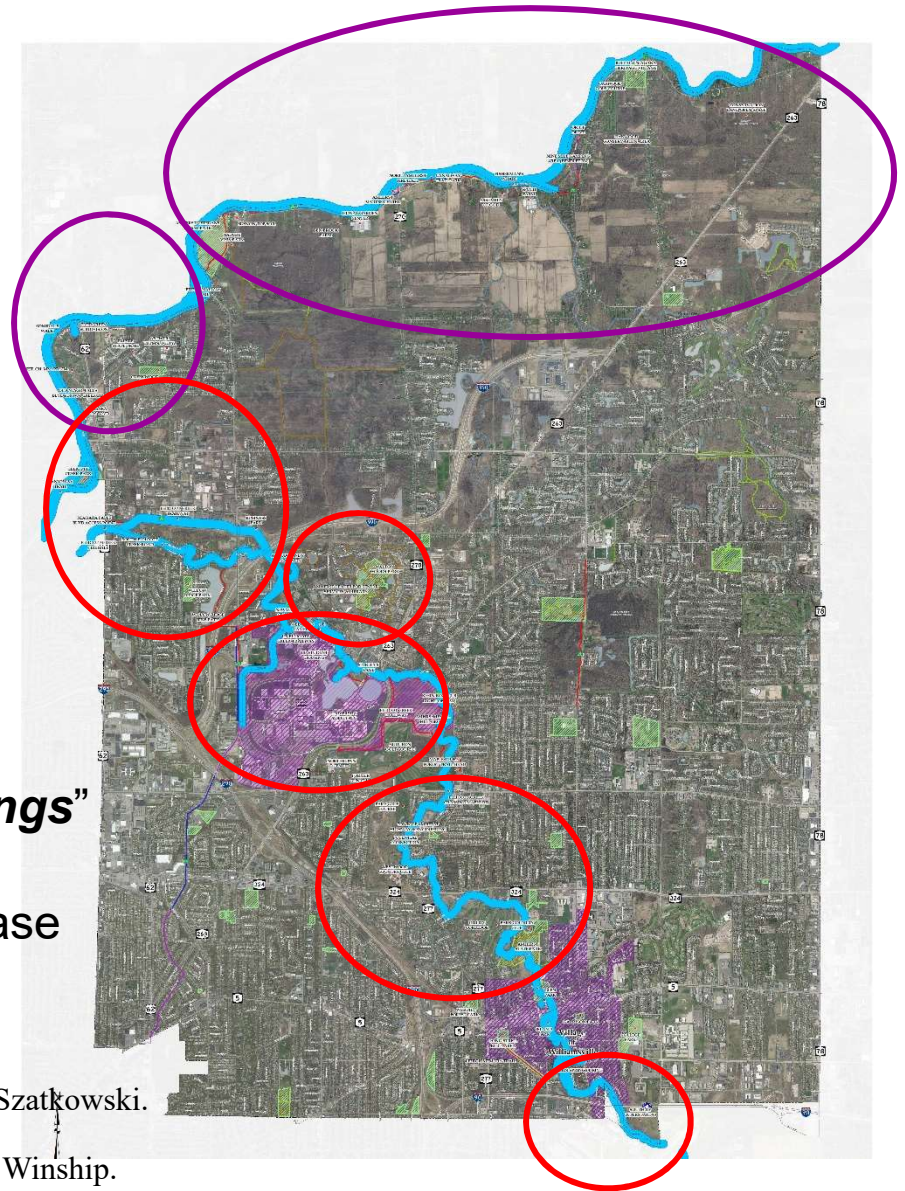


## *Waterfront Advisory Committee*

- Town Staff & the Committee took 5 tours
- Took place August & September 2018
  - Tour 1 – Tonawanda Creek (East)
  - Tour 2 – Westwood Area
  - Tour 3 – Amherst State Park Area
  - Tour 4 – UB & Northtown Center
  - Tour 5 – Tonawanda Creek (West)
- Town Staff prepared a “**Summary of Findings**”
- Information will be part of the Inventory Phase

### Photograph Citations

- Photo of the WAC Tours 1-5 taken in 2018. Town of Amherst, Jeffrey Szatkowski.
- Photo of the WAC Tours 1-5 taken in 2018. Town of Amherst, Maggie Winship.
- Joseph A. Grande. *Glancing Back. A Pictorial History of Amherst, NY.* 2000.



# *Inventory Map Data Resources*

## **USDA**

USDA Natural Resource Conservation Service -  
NRCS Gateway Site.  
<https://datagateway.nrcs.usda.gov/>

## **SHPO**

Historic Register Sites and Districts.

## **DOS**

NYS Scenic Areas of Statewide Significance  
NYS Significant Coastal Fish and Wildlife Habitat  
Areas.  
NYS List of Coastal Waterbodies and Designated  
Inland Waterways.  
NYS DOS Office of Planning and Development  
(Map)

## **DEC**

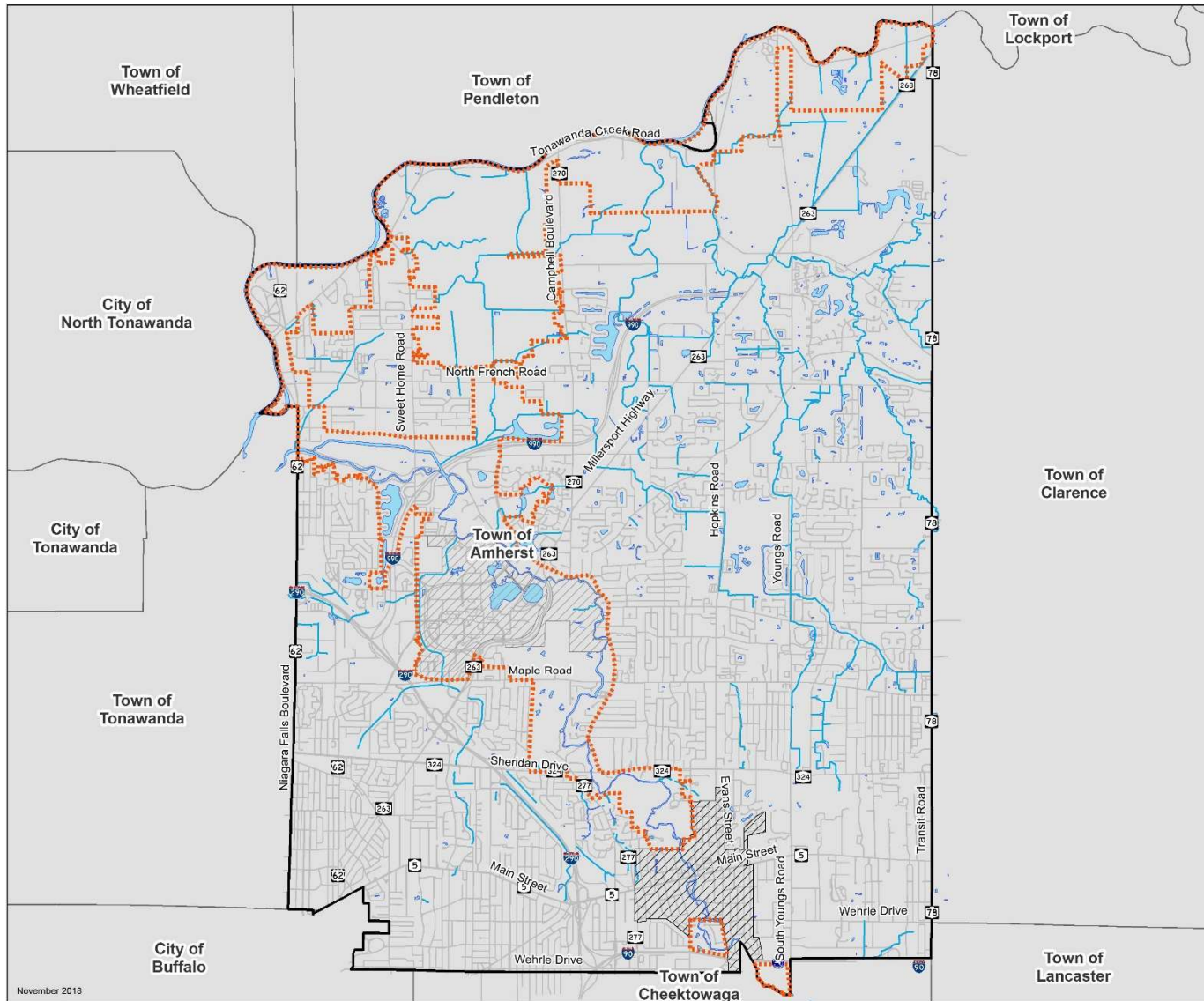
<http://www.nysgis.state.ny.us/gisdata>  
Water Quality Classifications  
Waterbody Inventory/Priority Waterbodies  
List  
Critical Environmental Areas in NYS  
Ecological Zones  
Boat Launches  
Public Fishing  
Natural Heritage Communities  
Lands and Campgrounds.  
Roads and Trails  
Points of Interest

## **Erie County**

GIS Data - Ellicott Creek Watershed Area  
Prepared by Lisa Matthies-Wiza, Erie  
County Office of GIS. Lisa.matthies-  
wiza@erie.gov29-Mar-18



# LWRP Inventory Maps



**TOWN OF AMHERST**  
Erie County, New York

**Local Waterfront Revitalization Program**

**Hydrography**

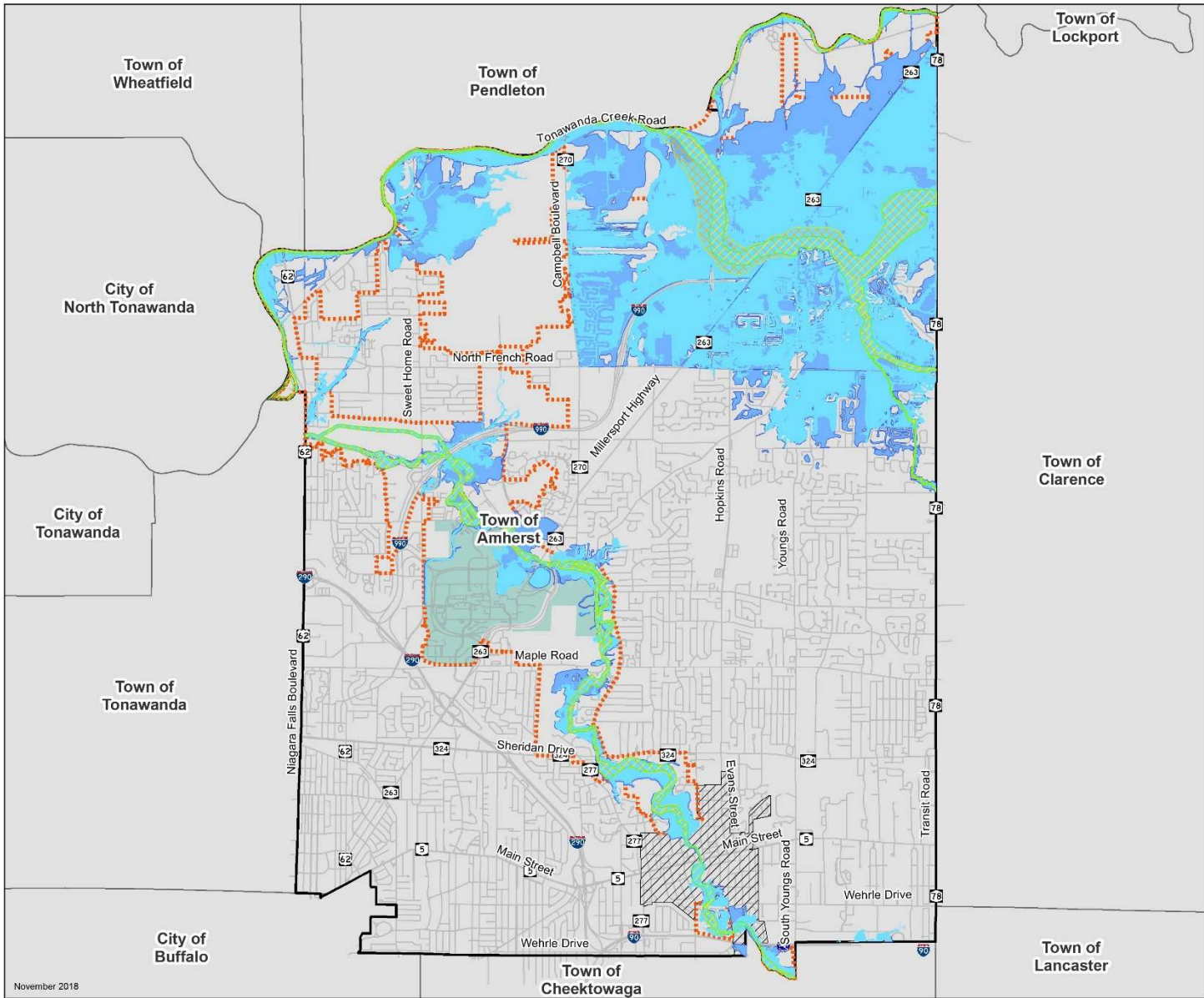
**Legend**

- Roads
- Ditches
- LWRP Boundary
- Hydrography (Creeks, Lakes, Ponds)
- UB North Campus
- Williamsville
- Town Boundary

November 2018

Data: United States Geologic Survey (USGS)  
Geographic Coordinate System: NAD 1983 2011 StatePlane New York West FIPS 3103 FT US

**Draft**  
**December 3, 2018**



**TOWN OF AMHERST**  
 Erie County, New York



**Local Waterfront  
 Revitalization Program**

**Floodway & Floodplain**

- Legend**
- Roads
  - ⊞ LWRP Boundary
  - ⊞ Existing FEMA Floodway
  - Existing FEMA Floodplain- 100 yr.
  - ▨ Proposed FEMA Floodway
  - Proposed FEMA Floodplain- 100 yr.
  - ▨ Williamsville
  - UB North Campus
  - Town Boundary



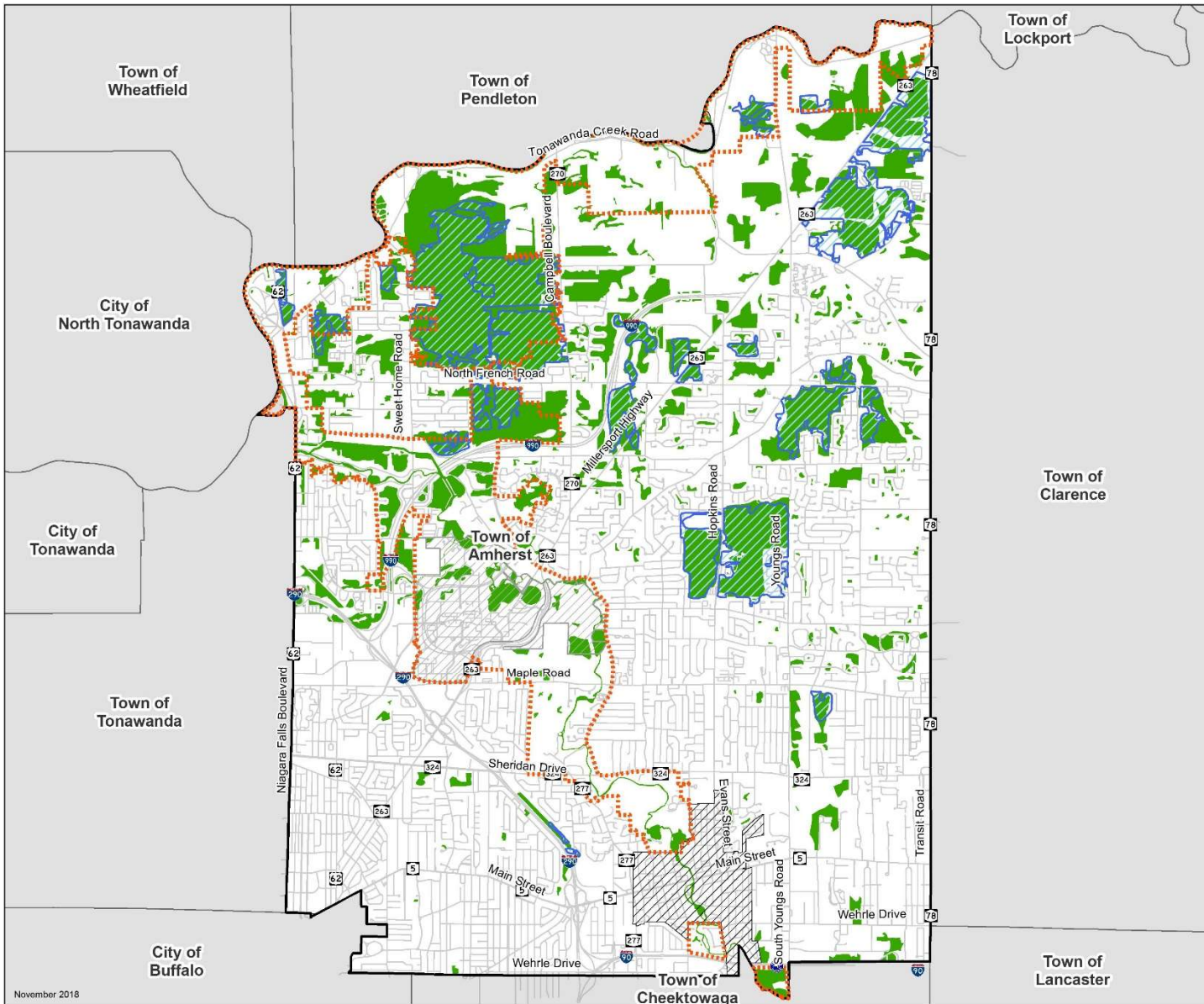
Data: Federal Emergency Management Agency (FEMA)  
 Geographic Coordinate System: NAD 1983 2011 StatePlane New York West FIPS 3103 Ft US

**Draft**  
**December 3, 2018**







# TOWN OF AMHERST

Erie County, New York

## Local Waterfront Revitalization Program

### Wetlands

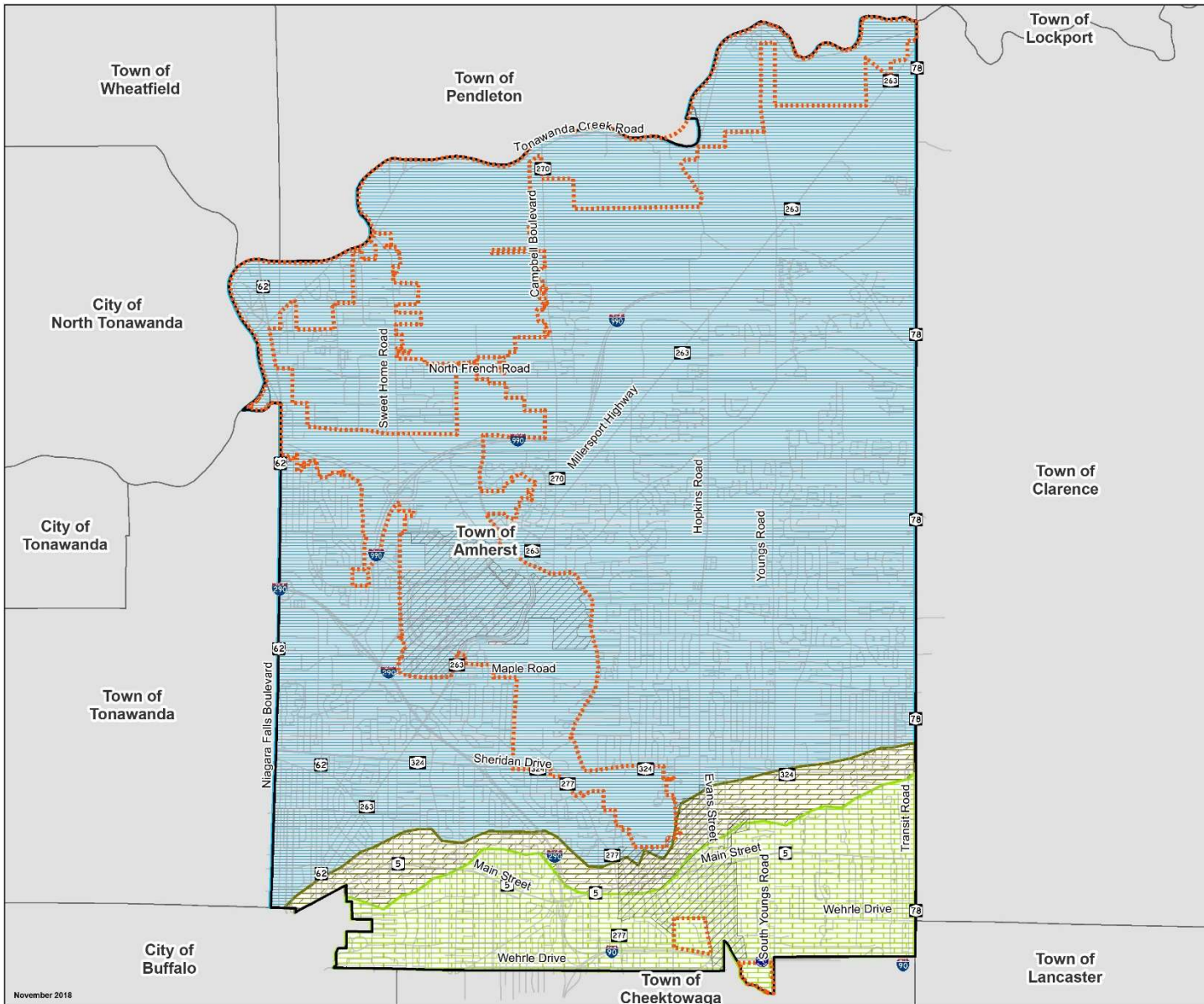
- Legend**
- Roads
  - LWRP Boundary
  - NYS Department of Environmental Conservation
  - US Federal Fish and Wildlife Service
  - UB North Campus
  - Williamsville
  - Town Boundary



Data: NYS Department of Environmental Conservation (DEC)  
Geographic Coordinate System: NAD 1983 2011 StatePlane New York West FIPS 3103 FT US

**Draft**  
**December 3, 2018**





# TOWN OF AMHERST

Erie County, New York

## Local Waterfront Revitalization Program

### Bedrock

- Legend**
- Roads
  - ⋯ LWRP Boundary
  - ▨ UB North Campus
  - ▨ Williamsville
  - ▭ Town Boundary
- Bedrock**
- ▨ dolostone (dolomite)
  - ▨ limestone
  - ▨ shale

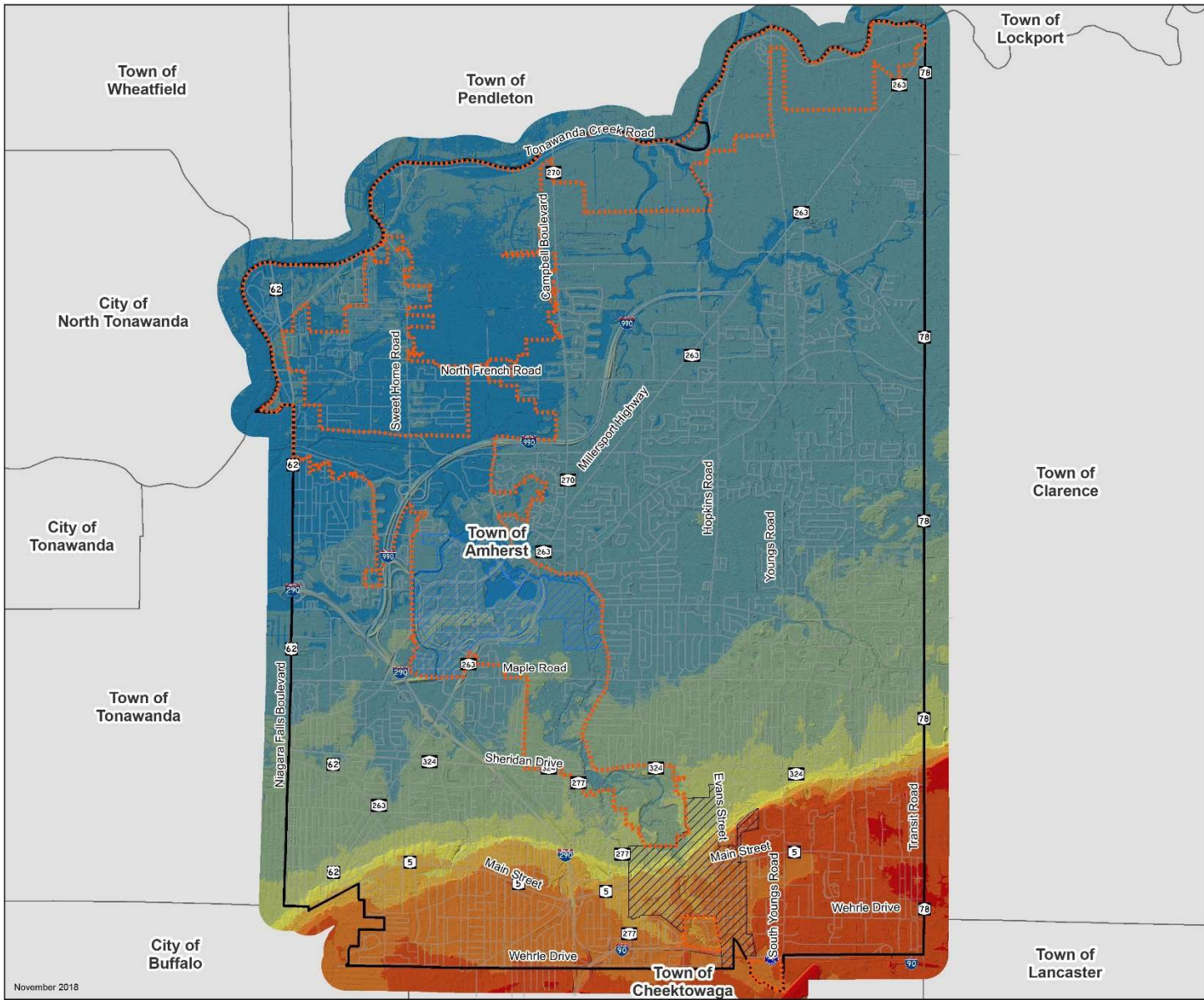


Data: United States Geologic Survey (USGS)  
 Geographic Coordinate System: NAD 1983 2011 StatePlane New York West FIPS 3103 FT US



**Draft**  
**December 3, 2018**





**TOWN OF AMHERST**  
 Erie County, New York

**Local Waterfront  
 Revitalization Program**

**Terrain Relief**

- Legend**
- Roads
  - ⋯ LWRP Boundary
  - ▨ UB North Campus
  - ▨ Williamsville
  - ▭ Town Boundary

- Elevation (Feet)**
- 708.181 - 726.98
  - 689.382 - 708.181
  - 670.583 - 689.382
  - 651.784 - 670.583
  - 632.986 - 651.784
  - 614.187 - 632.986
  - 595.388 - 614.187
  - 576.589 - 595.388
  - 557.79 - 576.589

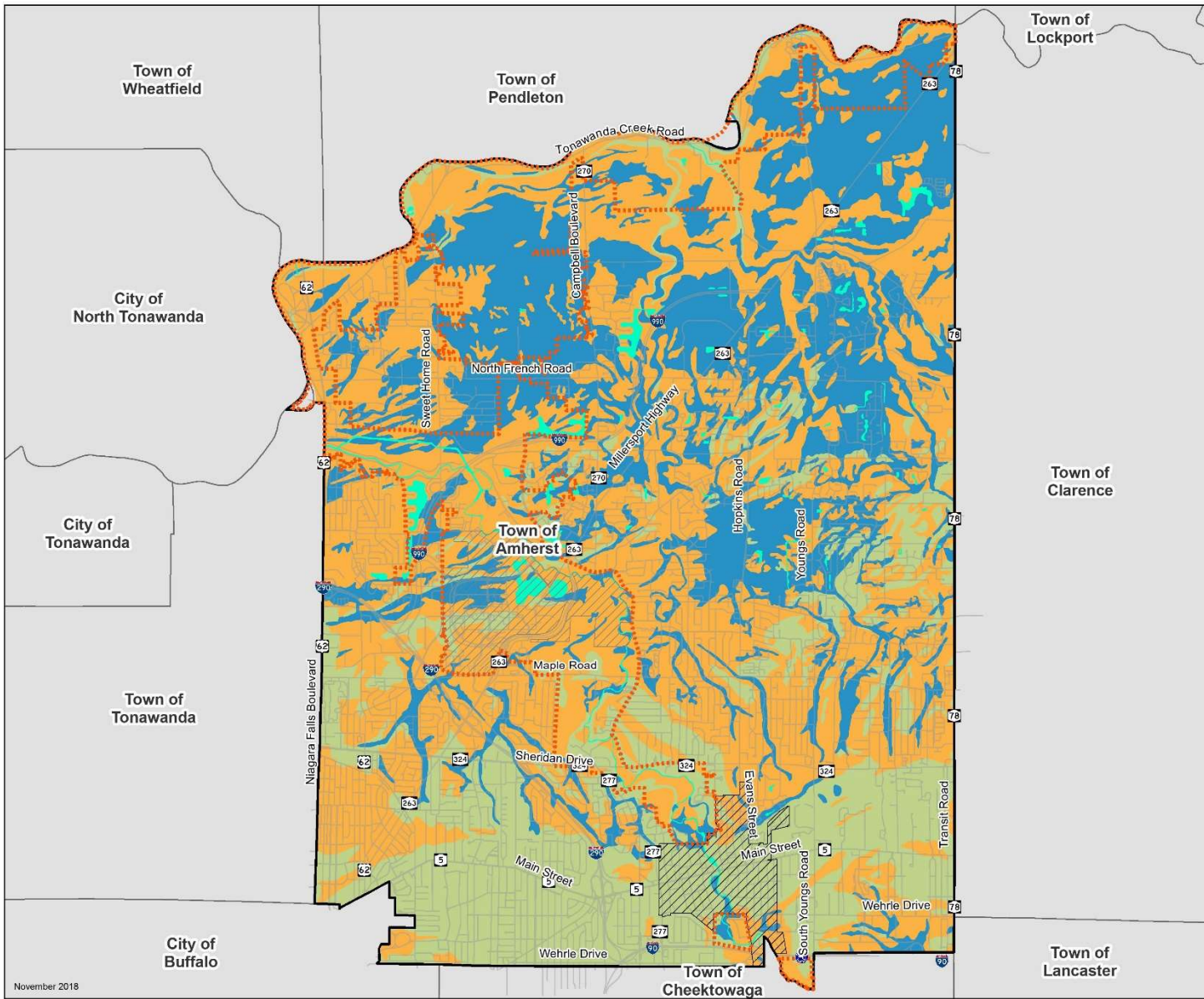


Data: Town of Amherst- GIS Division  
 Geographic Coordinate System: NAD 1983 2011 StatePlane New York West FIPS 3103 FT US



**Draft**  
**December 3, 2018**





**TOWN OF AMHERST**  
Erie County, New York

**Local Waterfront  
Revitalization Program**

**Soil**

**Legend**

- Roads
- LWRP Boundary
- ▨ UB North Campus
- ▨ Williamsville
- ▭ Town Boundary

**USGS Soil Type**

- Hydric (saturated by water)
- Not Hydric
- Potential For Hydric Inclusions
- Water



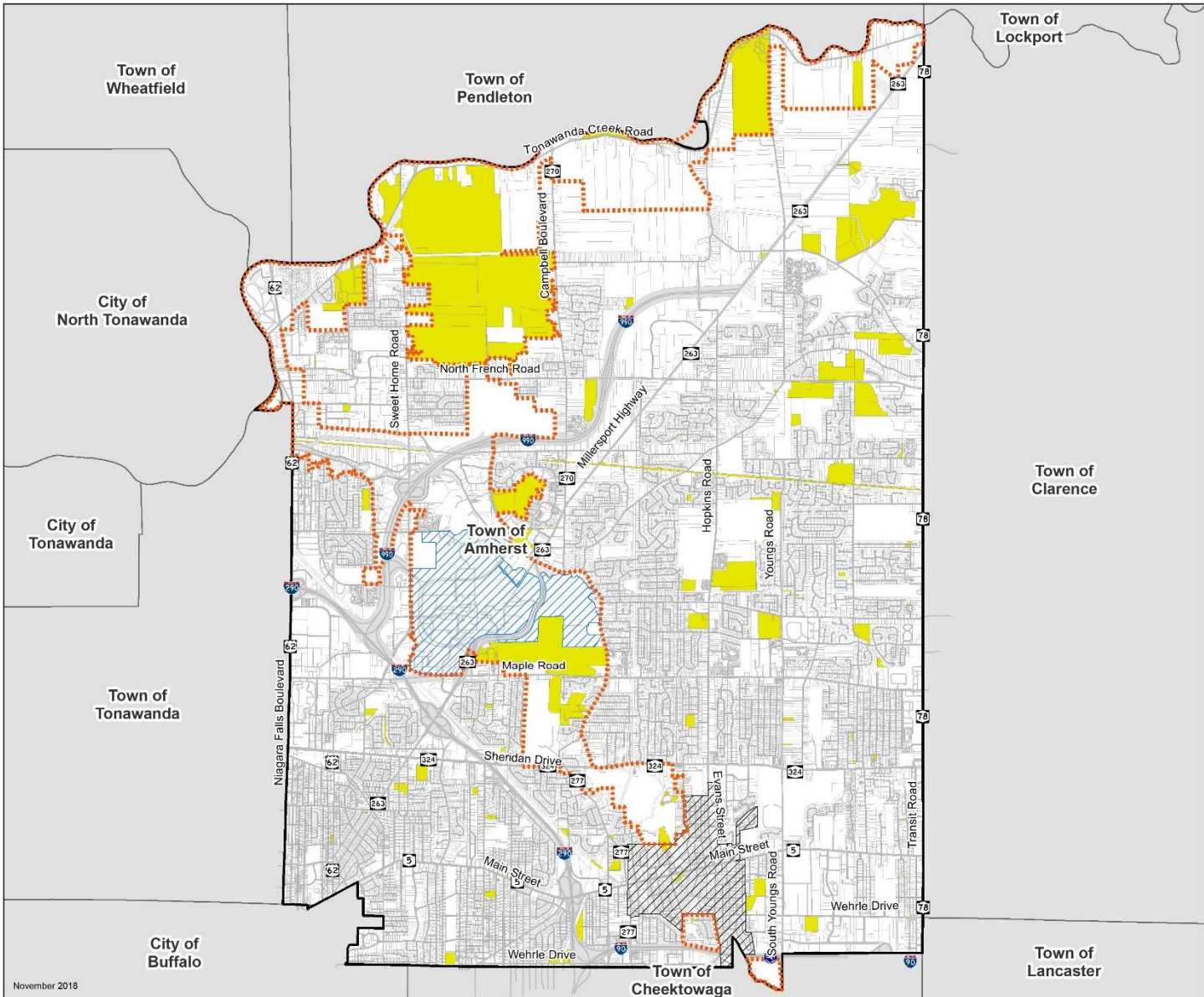
Data: United States Geologic Survey (USGS)  
Geographic Coordinate System: NAD 1983 2011 StatePlane New York West FIPS 3103 Ft US



**Draft**  
**December 3, 2018**







**TOWN OF AMHERST**  
Erie County, New York

**Local Waterfront  
Revitalization Program**

**Town Owned Parcels**

- Legend**
- Roads
  - LWRP Boundary
  - ▨ UB North Campus
  - ▨ Williamsville
  - Town Owned Parcels
  - Private
  - ▭ Town Boundary



Data: Town of Amherst- GIS Division  
Geographic Coordinate System: NAD 1983 2011 StatePlane New York West FIPS 3103 F1 US



**Draft**  
**December 3, 2018**



*LWRP Area  
In Pictures*



# ***TRAIL TYPES***



***“FOOTPATH  
ONLY”***



***STONE DUST***



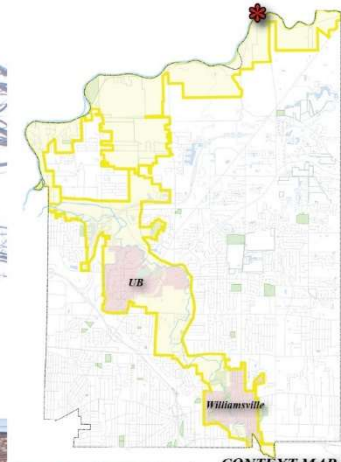
***MULTI-USE  
ASPHALT TRAILS***



***COMPOSITE  
BOARDWALK***



# Buffalo-Niagara Heritage Village



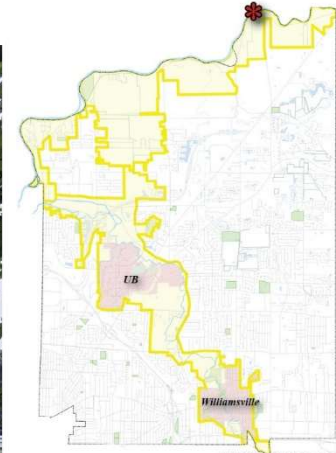
CONTEXT MAP



DETAIL MAP



# *Access Points to Tonawanda Creek*



CONTEXT MAP

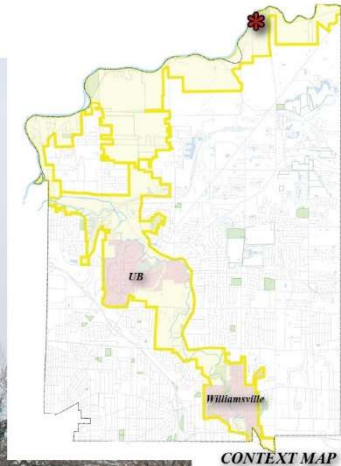


DETAIL MAP





# Oakwood Golf Course



CONTEXT MAP

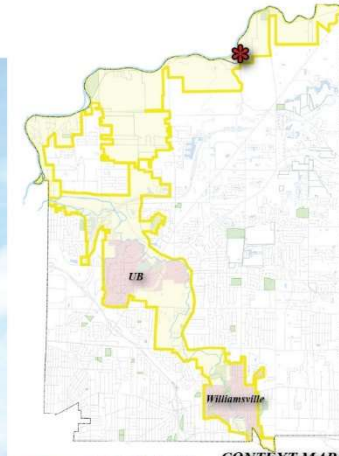


DETAIL MAP





# *Nine Mile Camping Area & Orbit Drive*



CONTEXT MAP

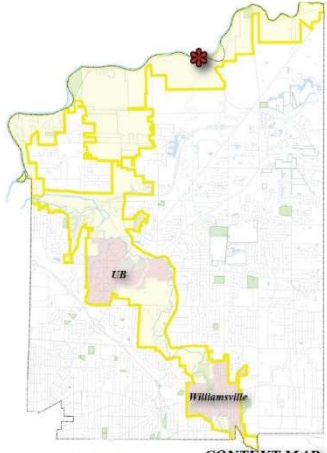


DETAIL MAP





# *Tonawanda Creek Road Character*



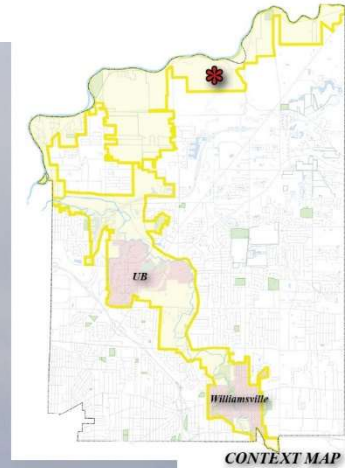
CONTEXT MAP



DETAIL MAP



# Spoth Farm



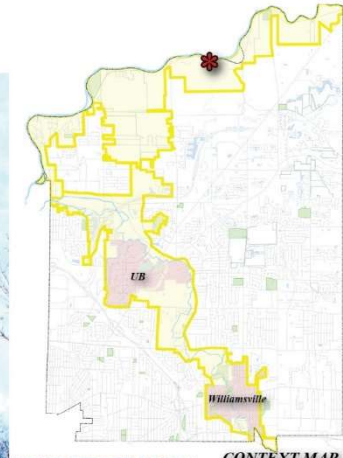
CONTEXT MAP



DETAIL MAP



# *Fisherman's Wharf*



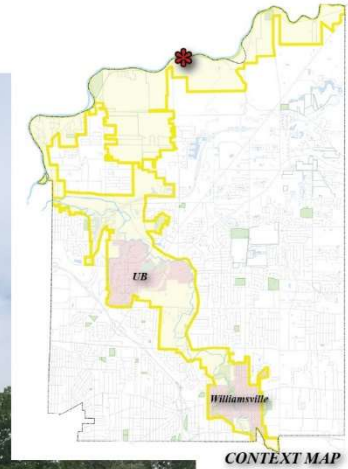
CONTEXT MAP



DETAIL MAP

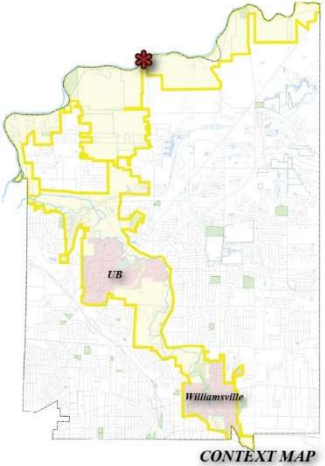


# *Tonawanda Creek*





# Amherst Marine Center



CONTEXT MAP



DETAIL MAP



# *Private Access to Tonawanda Creek*



CONTEXT MAP



DETAIL MAP





# Tonawanda Creek Road and Pedestrian Conflicts



# *Veterans Canal Park*





# Nature View Park



CONTEXT MAP



DETAIL MAP



# *Amherst Wastewater Treatment Facility*



CONTEXT MAP

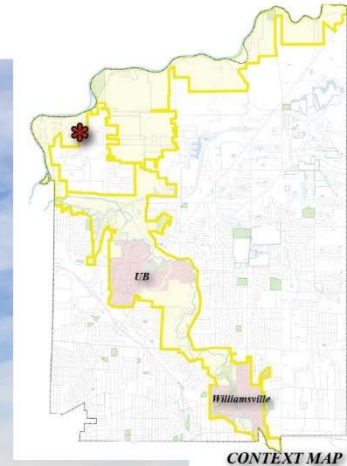


DETAIL MAP

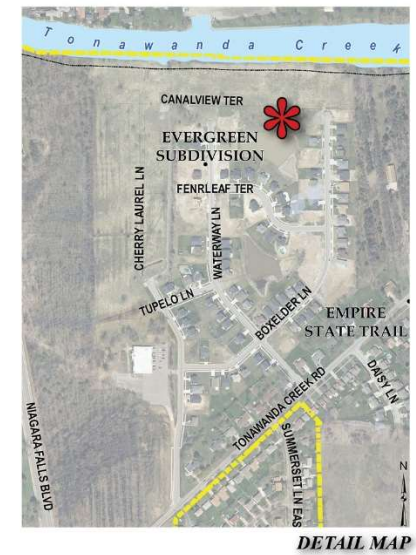
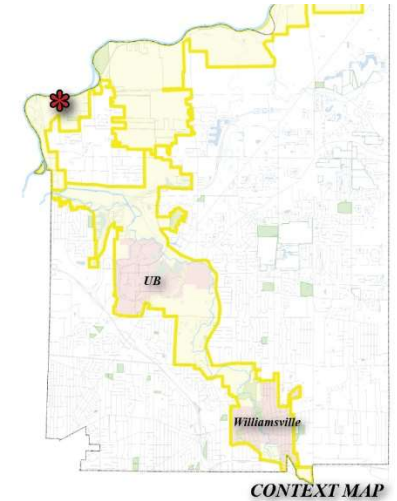




# *Creekwood Park*

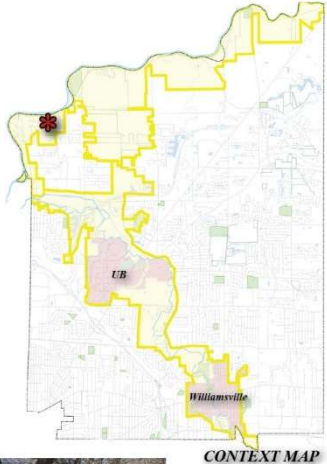


# Evergreen Neighborhood



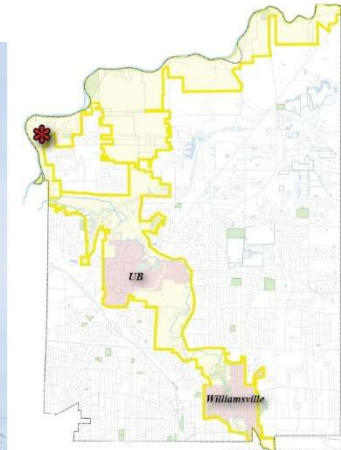


# Tonawanda Creek Road Character





# *White Chapel Memorial Park*



CONTEXT MAP



DETAIL MAP





# *Admiral's Walk*



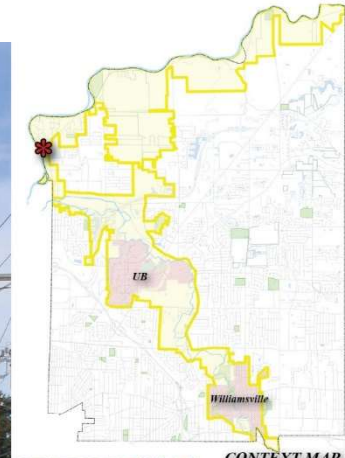
CONTEXT MAP



DETAIL MAP



# *Old Niagara Falls Boulevard*



CONTEXT MAP



DETAIL MAP





# *Old Niagara Falls Boulevard*



CONTEXT MAP



DETAIL MAP

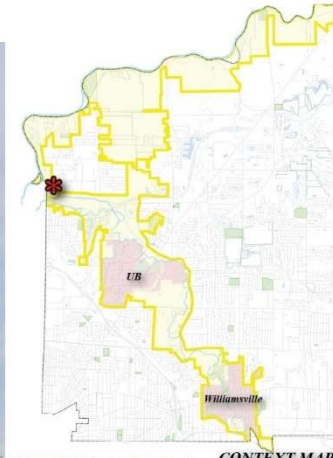




# *Ellicott Creek Park*



# Niagara Falls Boulevard



CONTEXT MAP



DETAIL MAP





# *Ellicott Creek Trailway & Niagara Falls Blvd*





# *Ellicott Creek & Niagara Falls Boulevard*





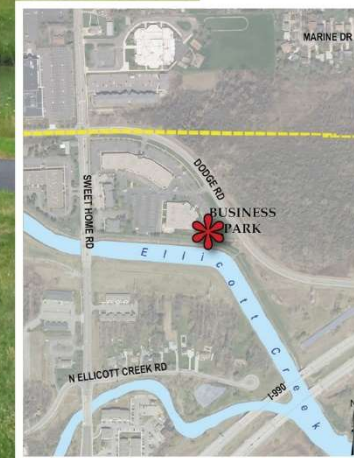
# *Ellicott Creek*



# *Business Park & Trailway Access*



CONTEXT MAP

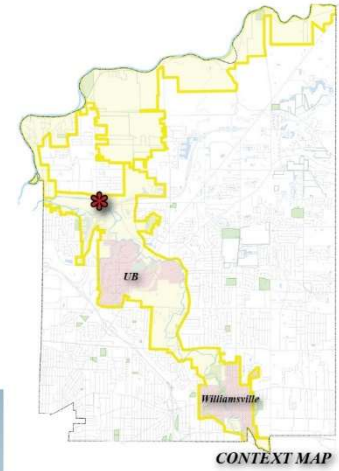


DETAIL MAP





# *Ellicott Creek Trailway*



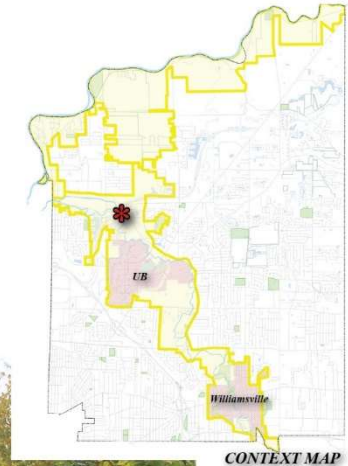
*CONTEXT MAP*



*DETAIL MAP*



# *North Forest Road*



CONTEXT MAP

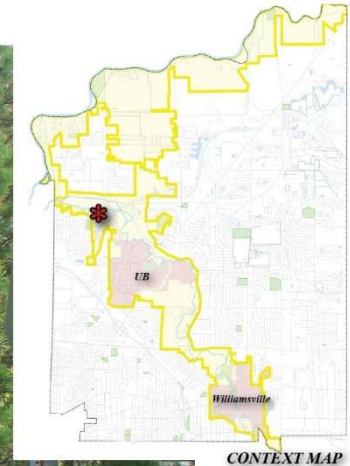


DETAIL MAP



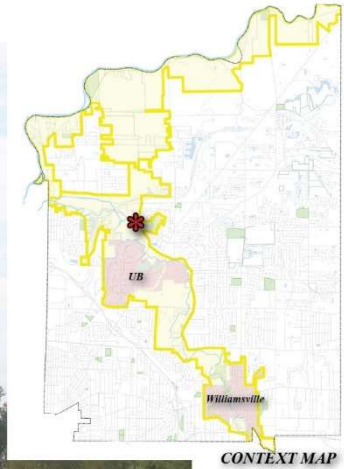


# *Bryant Woods*

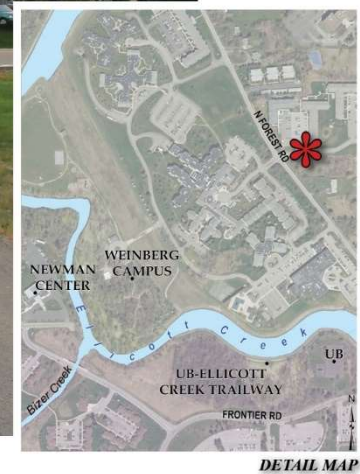
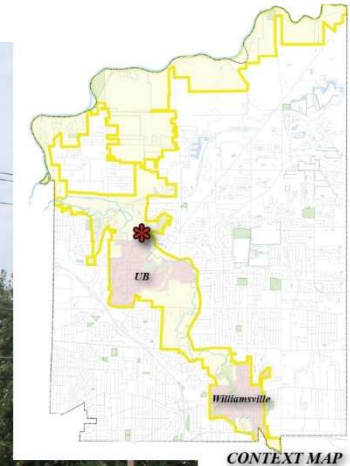




# *Audubon Parkway (NCD)*

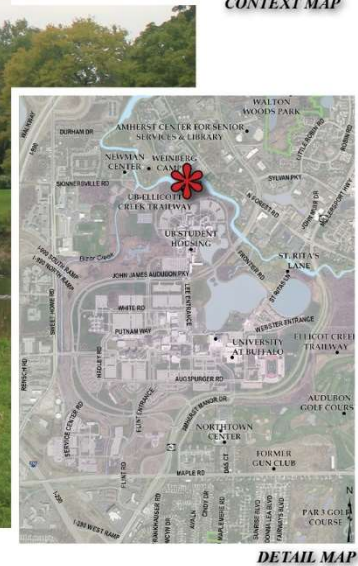
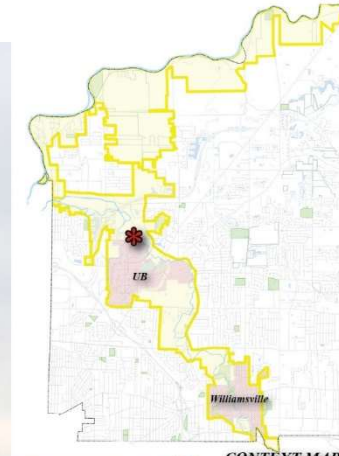


# Weinberg Campus

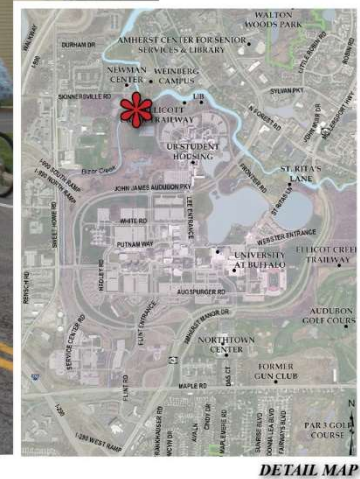




# *UB near the Jewish Community Center*



# *UB & Skinnersville Road*

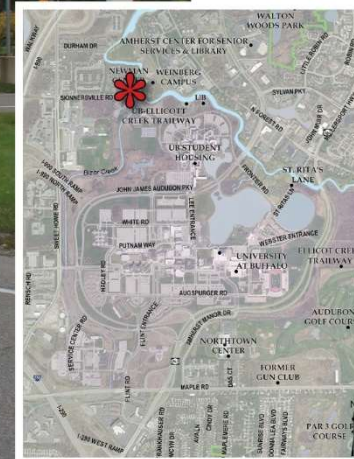




# *UB & the Newman Center*



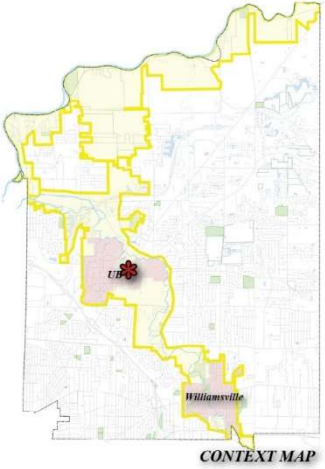
**CONTEXT MAP**



**DETAIL MAP**



# University Campus



CONTEXT MAP

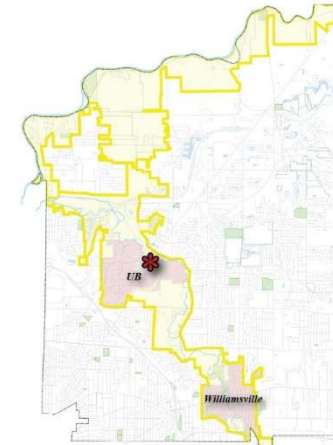


DETAIL MAP

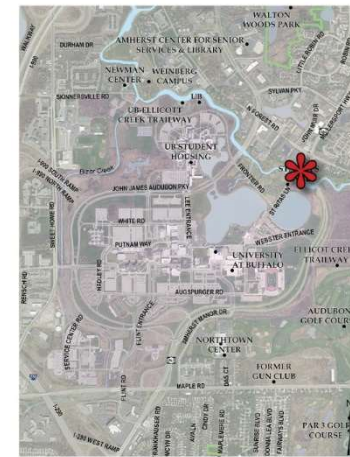




# *UB & St. Rita's Lane*



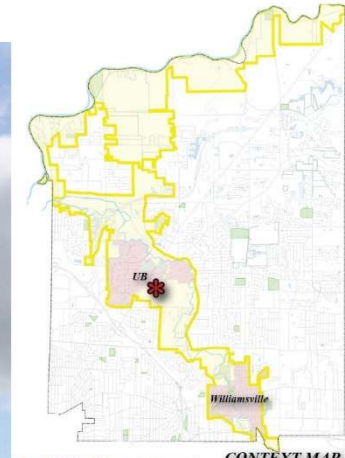
**CONTEXT MAP**



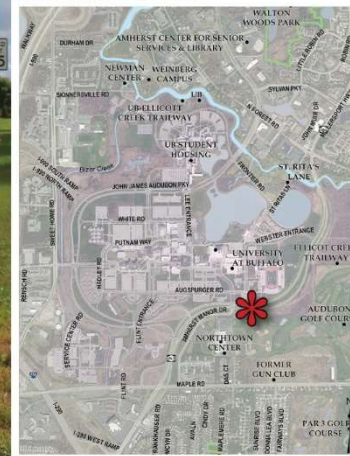
**DETAIL MAP**



# Millersport Highway Character



CONTEXT MAP



DETAIL MAP

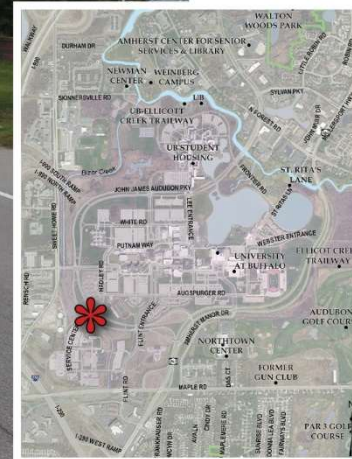




# *UB & John James Audubon Parkway*



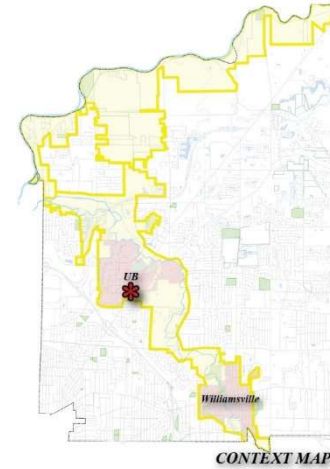
**CONTEXT MAP**



**DETAIL MAP**

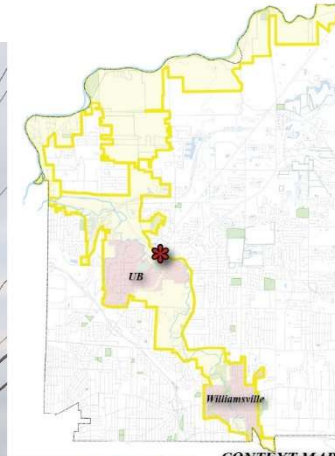


# Northtown Center

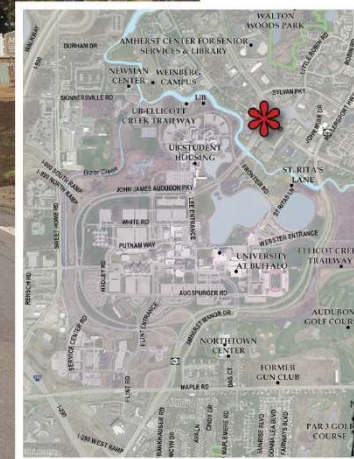




# North Forest Road Character



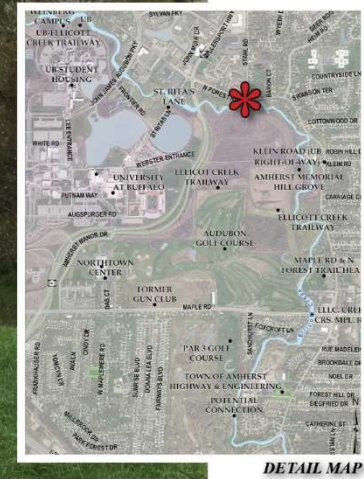
CONTEXT MAP



DETAIL MAP

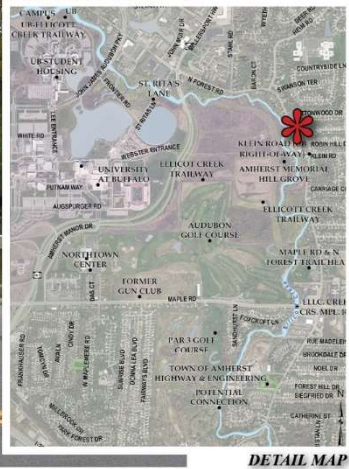
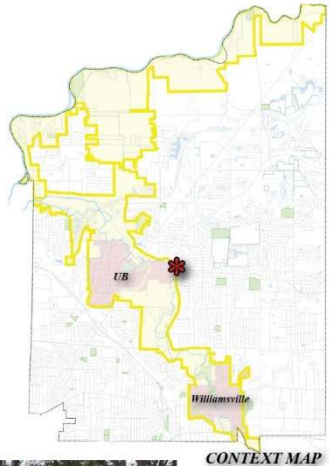


# North Forest Road & Stahl Road





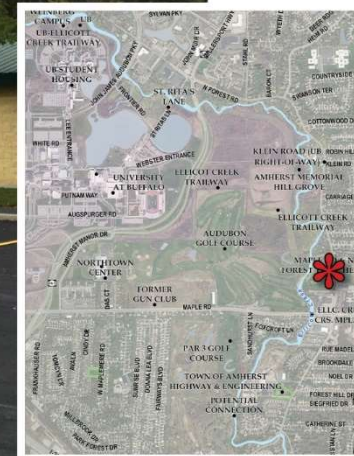
# *North Forest Road near Landing Court*



# *North Forest Road & Ellicott Creek Trailway*



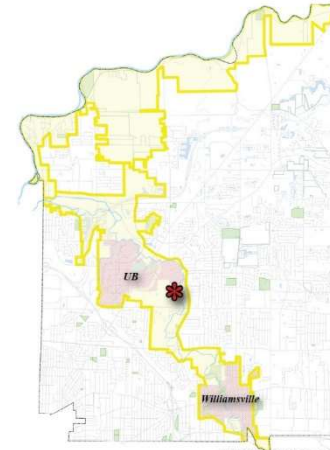
CONTEXT MAP



DETAIL MAP



# *Ellicott Creek Trailway & Flood Control*

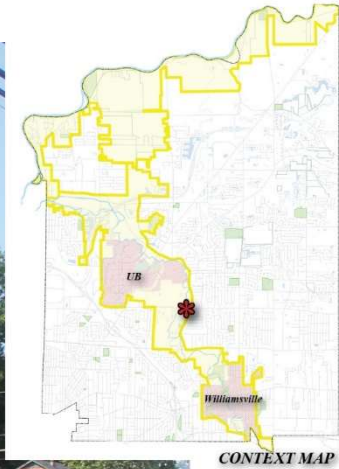


**CONTEXT MAP**

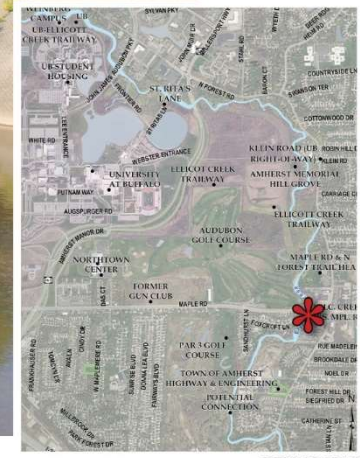


**DETAIL MAP**

# *Channelized Ellicott Creek*



CONTEXT MAP

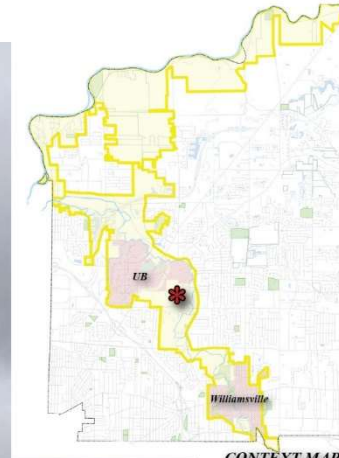


DETAIL MAP

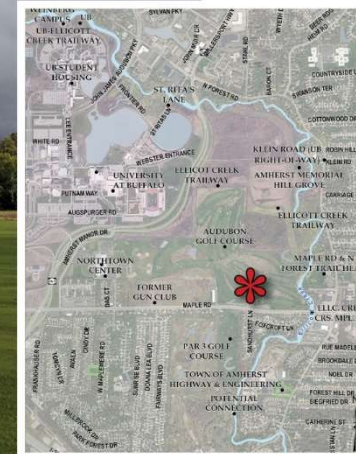




# Audubon Golf Course

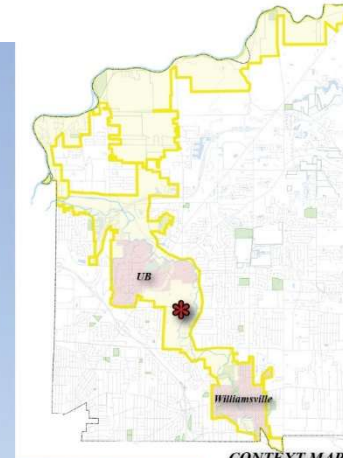


CONTEXT MAP

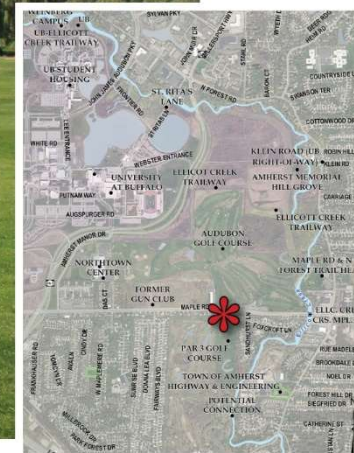


DETAIL MAP

# *Par 3 Golf Course*



**CONTEXT MAP**



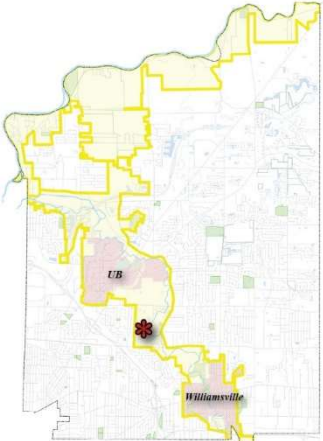
**DETAIL MAP**







# Westwood Existing Building



CONTEXT MAP

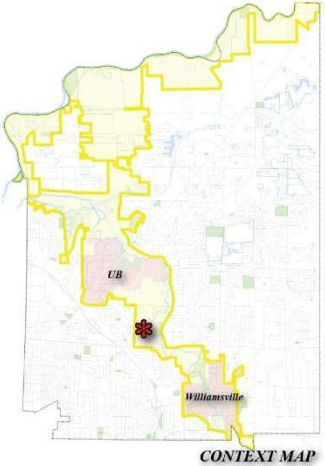


DETAIL MAP





# Westwood



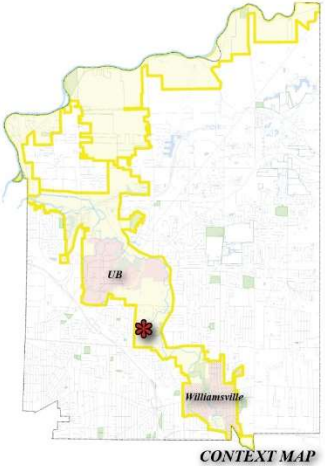
CONTEXT MAP



DETAIL MAP



# Westwood



CONTEXT MAP

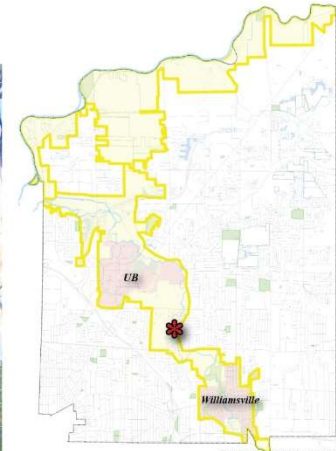


DETAIL MAP

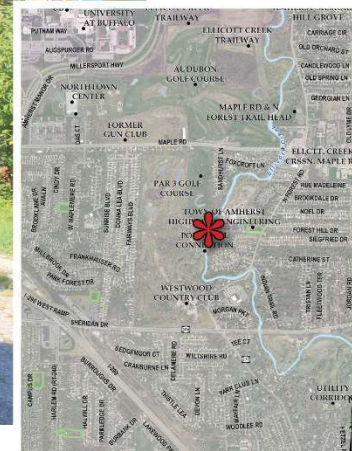




# Highway Department



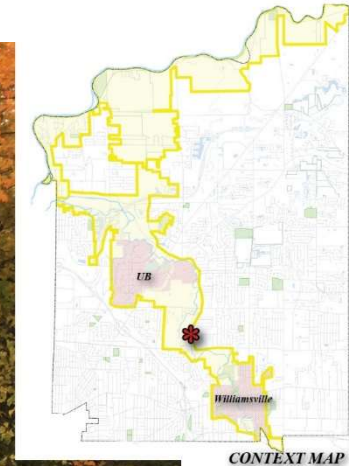
CONTEXT MAP



DETAIL MAP



# *North Forest Road & Ellicott Creek*



CONTEXT MAP

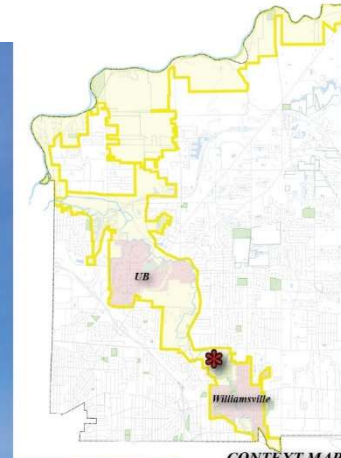


DETAIL MAP

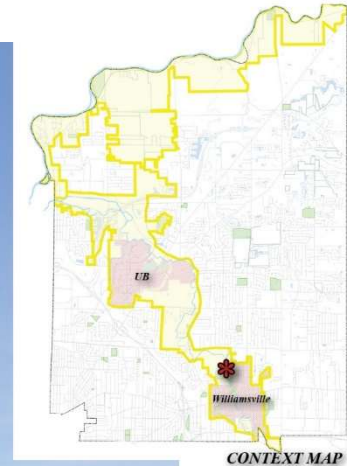




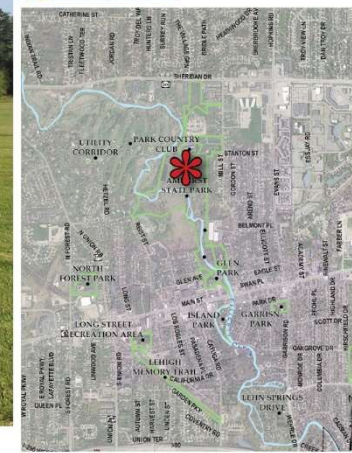
# Park Country Club



# *Amherst State Park*



**CONTEXT MAP**

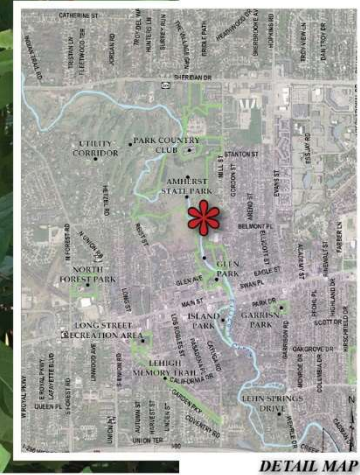
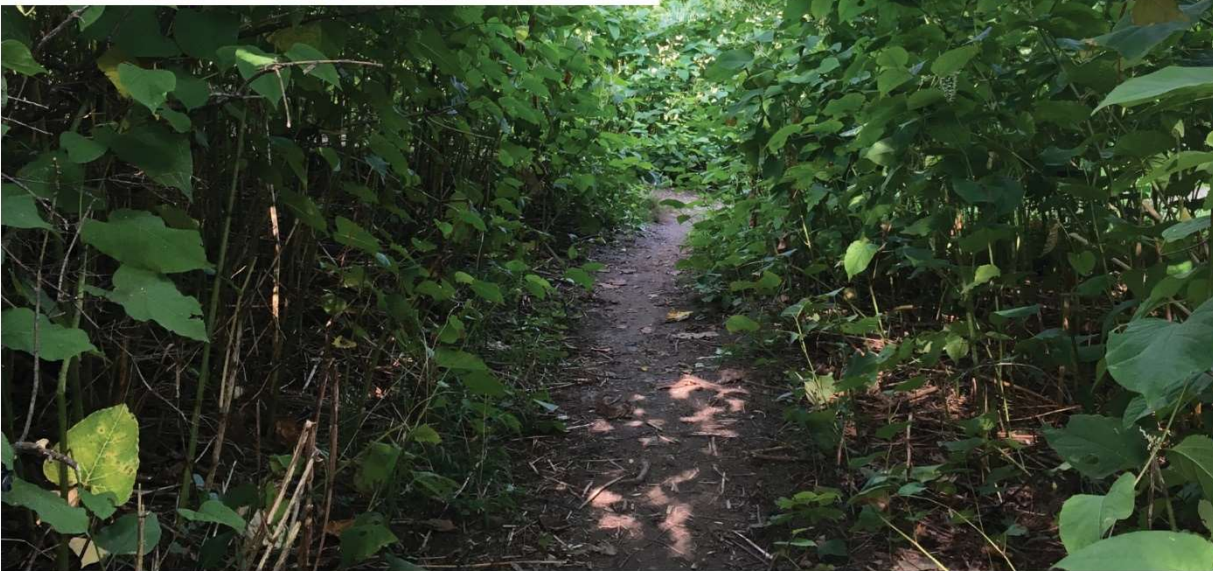


**DETAIL MAP**



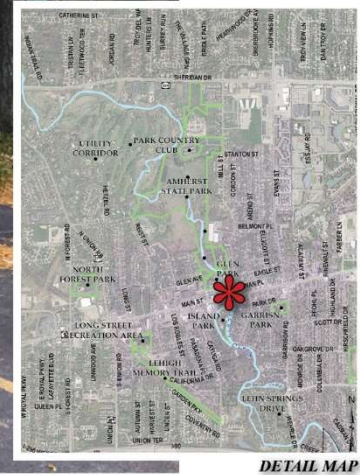
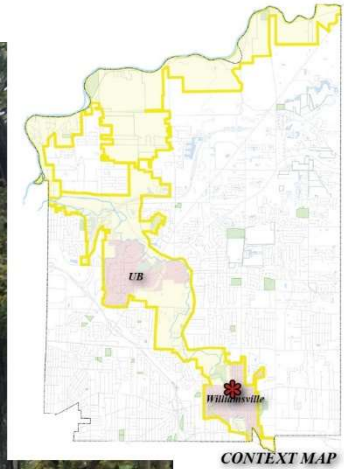


# *Amherst State Park & Invasive Species*



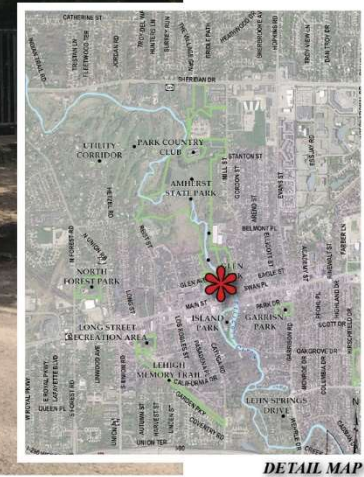


# *Former Noll Nature Center*



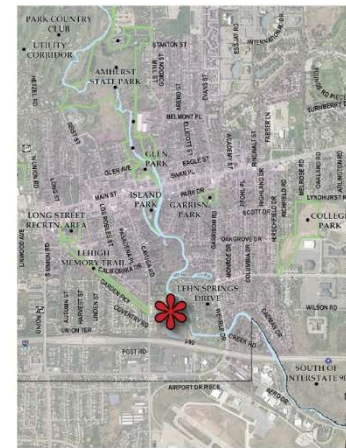
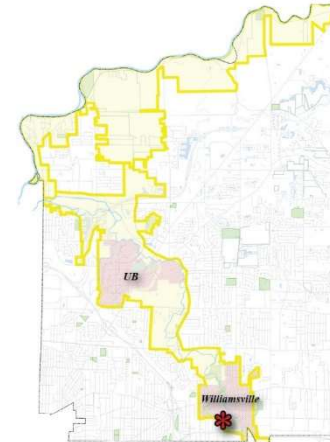


# Glen Park



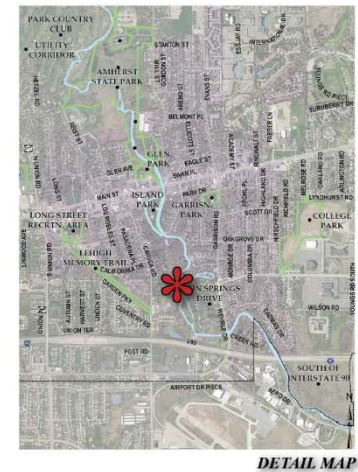
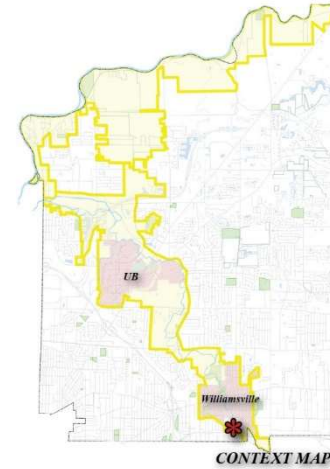


# *Fisher Pond (Residential Neighborhood)*

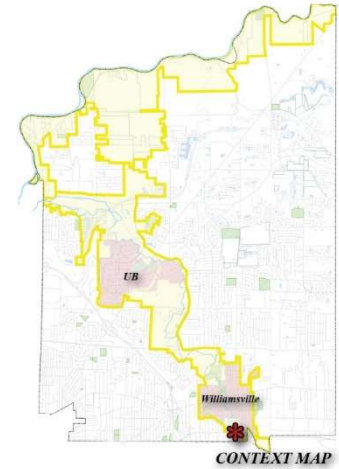




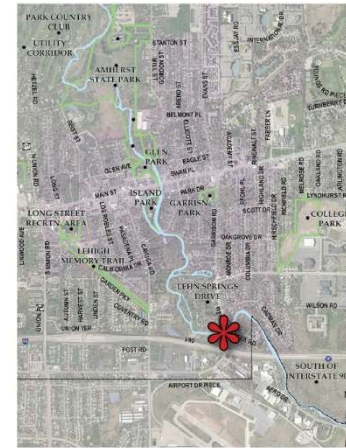
# *Lehn Springs (Residential Neighborhood)*



# Wehrle Drive & Aero Drive



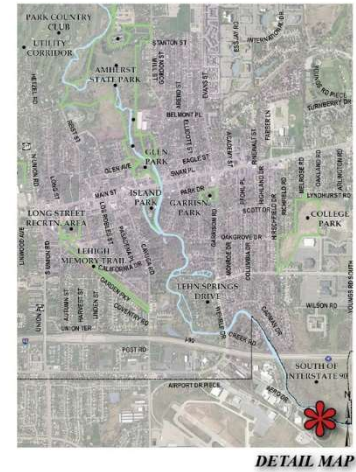
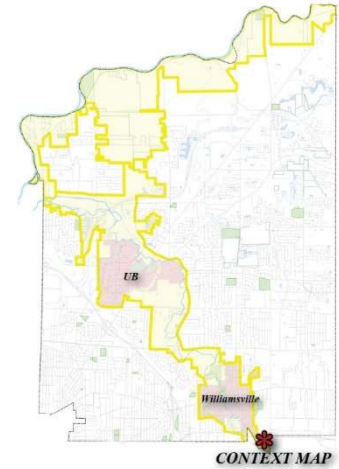
CONTEXT MAP



DETAIL MAP

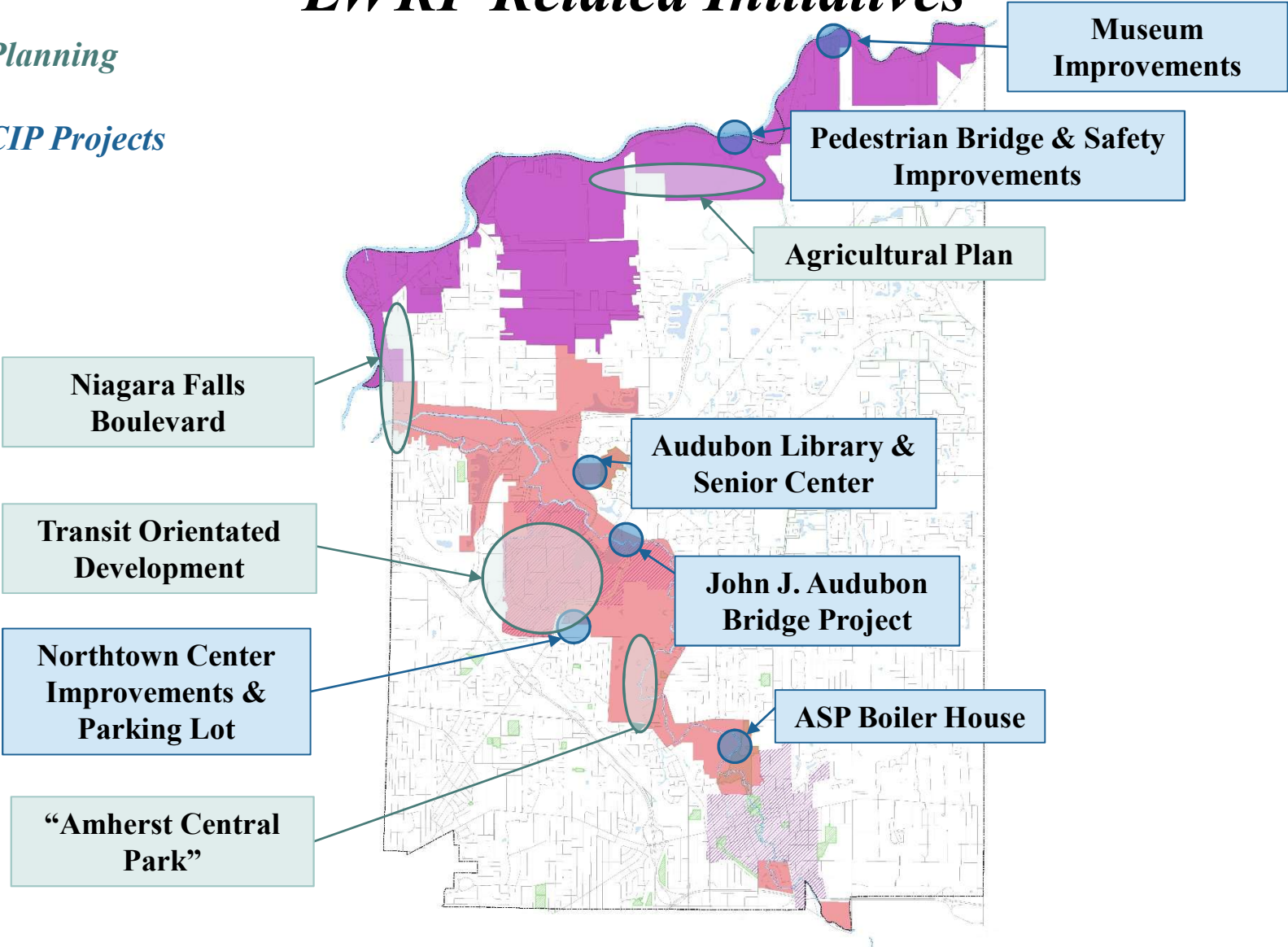


# *Aero Drive*




# LWRP Related Initiatives

- *Planning*
- *CIP Projects*





# **WE WANT YOUR FEEDBACK**

- 1. Please form Small Groups around the tables**
  - 2. Provide comments on the Boundary**
  - 3. Town Staff is available to answer Questions**
  - 4. Fill in a Comment Sheet before you leave or mail / email it**
- 

## ***LWRP : Questions to Consider***

- Are there currently any waterfront features in Amherst that you value?
  - What problems do you see with Amherst's waterfront areas?
  - What opportunities exist to enhance the waterfront area?
  - What steps could be taken to improve the waterfront area?
- What aspects of the waterfront should be preserved?
  - What should be changed?
  - What should the waterfront area look like in the future?





# Thank you!

---

*For information:*

[www.amherst.ny.us](http://www.amherst.ny.us) (keyword: lwrp)

Email: [lwrp@amherst.ny.us](mailto:lwrp@amherst.ny.us)

Planning Department: (716) 631-7051

