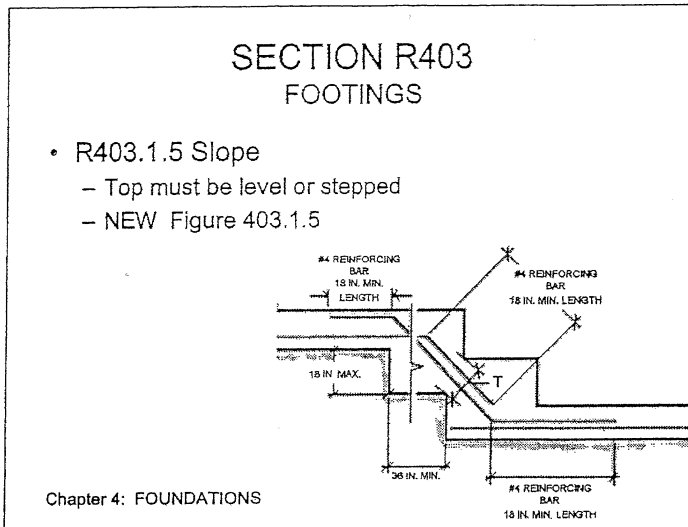
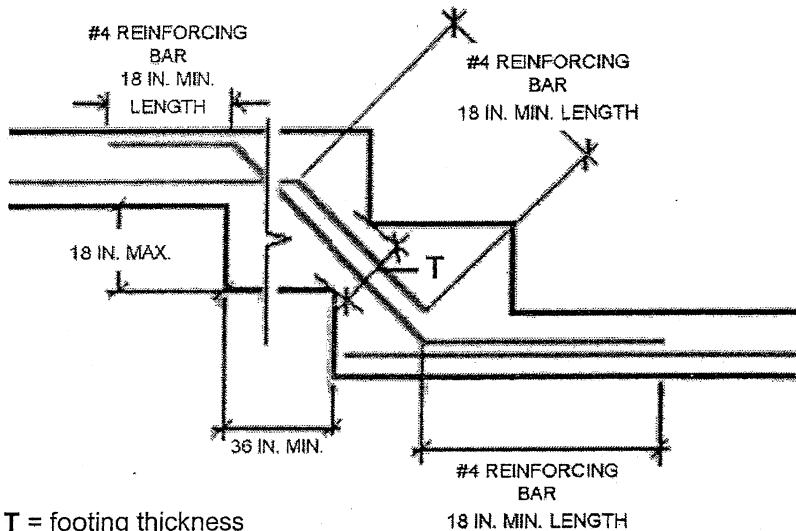


# Residential Code of New York



**R403.1.5 Slope.** The top surface of footings shall be level. The bottom surface of footings shall not have a slope exceeding one unit vertical in 10 units horizontal (10-percent slope). Footings shall be stepped where it is necessary to change the elevation of the top surface of the footings or where the slope of the bottom surface of the footings will exceed one unit vertical in ten units horizontal (10-percent slope) in conformance with Figure R403.1.5.



**Notes:** T = footing thickness

The minimum footing thickness, T, in stepped areas shall equal the footing thickness in those unstepped areas.

The reinforcing bar size in stepped areas shall equal the bar size in those unstepped areas.

A minimum of 3 inches of concrete is required around all reinforcing bars.

**FIGURE R403.1.5  
STEPPED FOOTING**