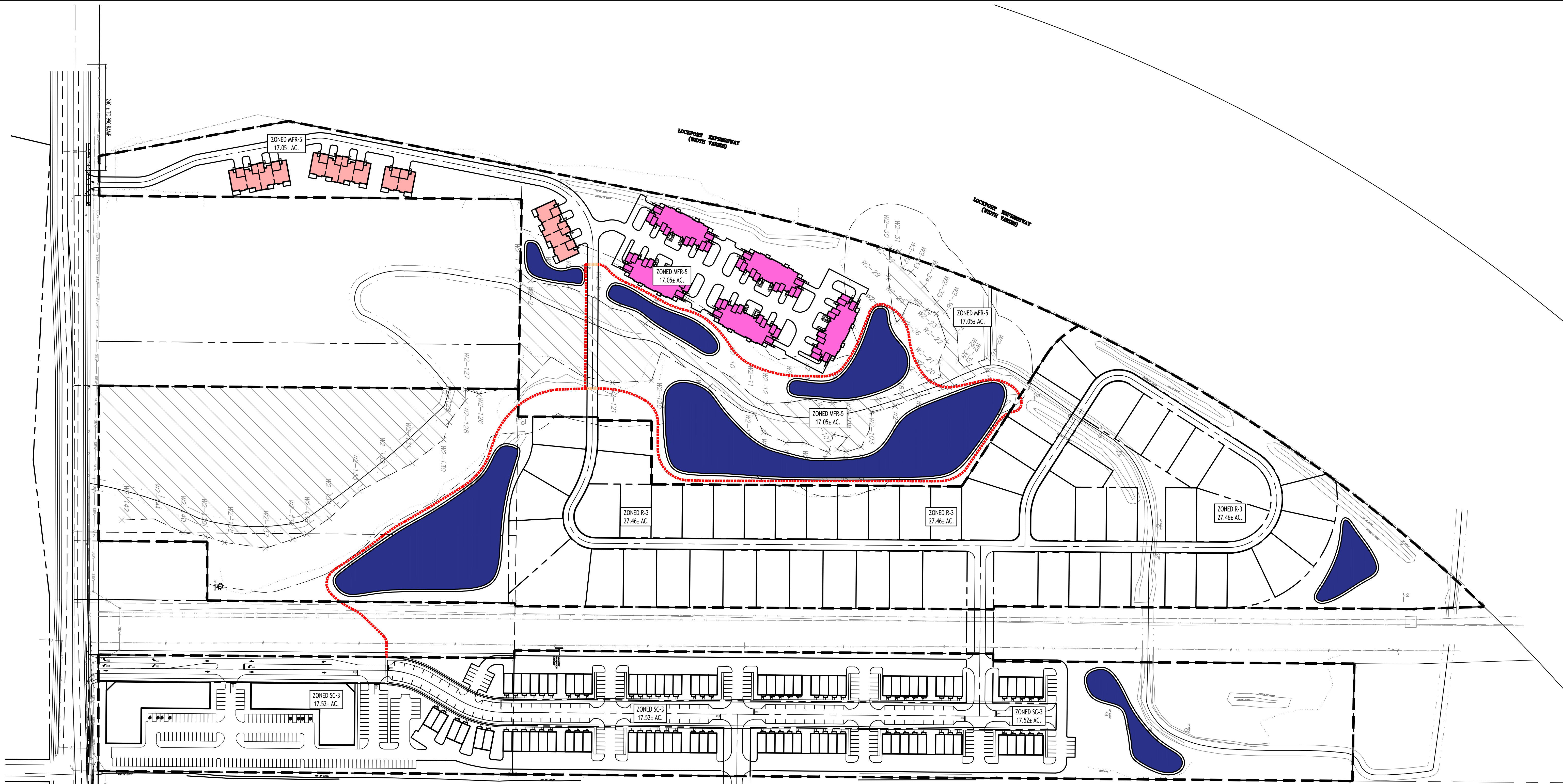


All Rights Reserved. Reuse of these documents without the expressed written permission of CARMINA WOOD DESIGN is prohibited. WARNING: It is a violation of article 45 of the Public Access Law to alter this drawing. If altered such R.A., P.E. or L.L.S. shall affix his or her seal, signature, the date, the notation "Altered By" and a specific description of the alteration.



RESIDENTIAL USE SUMMARY

4-UNIT or 2-UNIT, 1-STORY BLDGS = 14	
10-UNIT, 2-STORY BLDGS = 50	
2-6-UNIT, 2-STORY TOWNHOME BLDGS = 86	
2-STORY MIXED USE BUILDINGS = 70	
TOTAL RESIDENTIAL UNITS = 220	

PROPOSED WALKING/JOGGING TRAILS -----

SITE DATA (SA TO BE REZONED R-3)
55 SINGLE FAMILY LOTS (27.46± AC.)

MIN. LOT WIDTH = 65 FT INTERIOR LOTS
MIN. LOT WIDTH = 75 FT CORNER LOTS
MIN. LOT AREA = 8,450 SF INTERIOR LOTS
MIN. LOT AREA = 9,750 SF CORNER LOTS
FRONT SETBACK = 30 FT
SIDE SETBACK = 5 FT
REAR SETBACK = 30 FT
MAXIMUM LOT COVERAGE = 35%
MAXIMUM BUILDING HEIGHT = 35 FT
MINIMUM FLOOR AREA = 1,000 SF (1 STORY)
MINIMUM FLOOR AREA = 1,200 SF (2 STORIES)

SITE DATA (SA TO BE REZONED MFR-5)
MULTIFAMILY (17.05± AC.)

UNIT BREAKDOWN

1 - BDRM UNITS = 10
2 - BDRM UNITS = 34
3 - BDRM UNITS = 20
TOTAL = 64 UNITS

DENSITY CALCULATION

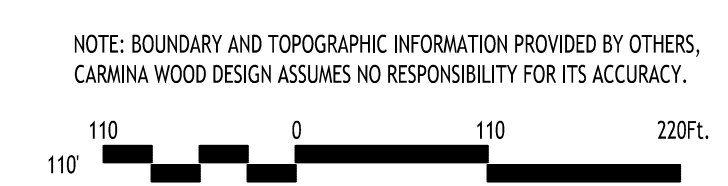
REQ'D LAND AREA

1 - BDRM: 10 x 3630 SF = 36,300 SF
2 - BDRM: 34 x 4356 SF = 148,104 SF
3 - BDRM: 20 x 5465 SF = 109,300 SF
TOTAL = 293,704 SF = 6.73 ACRES REQ'D

PARKING CALCULATION

REQ'D = 2 SPACES PER UNIT
 REQ'D = 64 UNITS x 2 = 128 SPACES REQ'D
 PROVIDED = 128 SPACES W/ GARAGES

CONCEPT ZONING PLAN
SCALE: 1"=110'



Mixed Use Development
1790 & 1920 North French Road & Portion of 999 Campbell Blvd.
Amherst, New York
SBL No. 27.04-1-12, 16.1 & 20, 27.00-2-29

REVISIONS:

No.	Description	Date
1	Revised title block address	4/3/24

PRELIMINARY
NOT FOR CONSTRUCTION

DRAWING NAME:
Concept Zoning Plan

Date: 3/22/24
 Drawn By: C. Wood
 Scale: As Noted

DRAWING NO.
C-100
Project No: 23-4131

NOTE: BOUNDARY AND TOPOGRAPHIC INFORMATION PROVIDED BY OTHERS, CARMINA WOOD DESIGN ASSUMES NO RESPONSIBILITY FOR ITS ACCURACY.