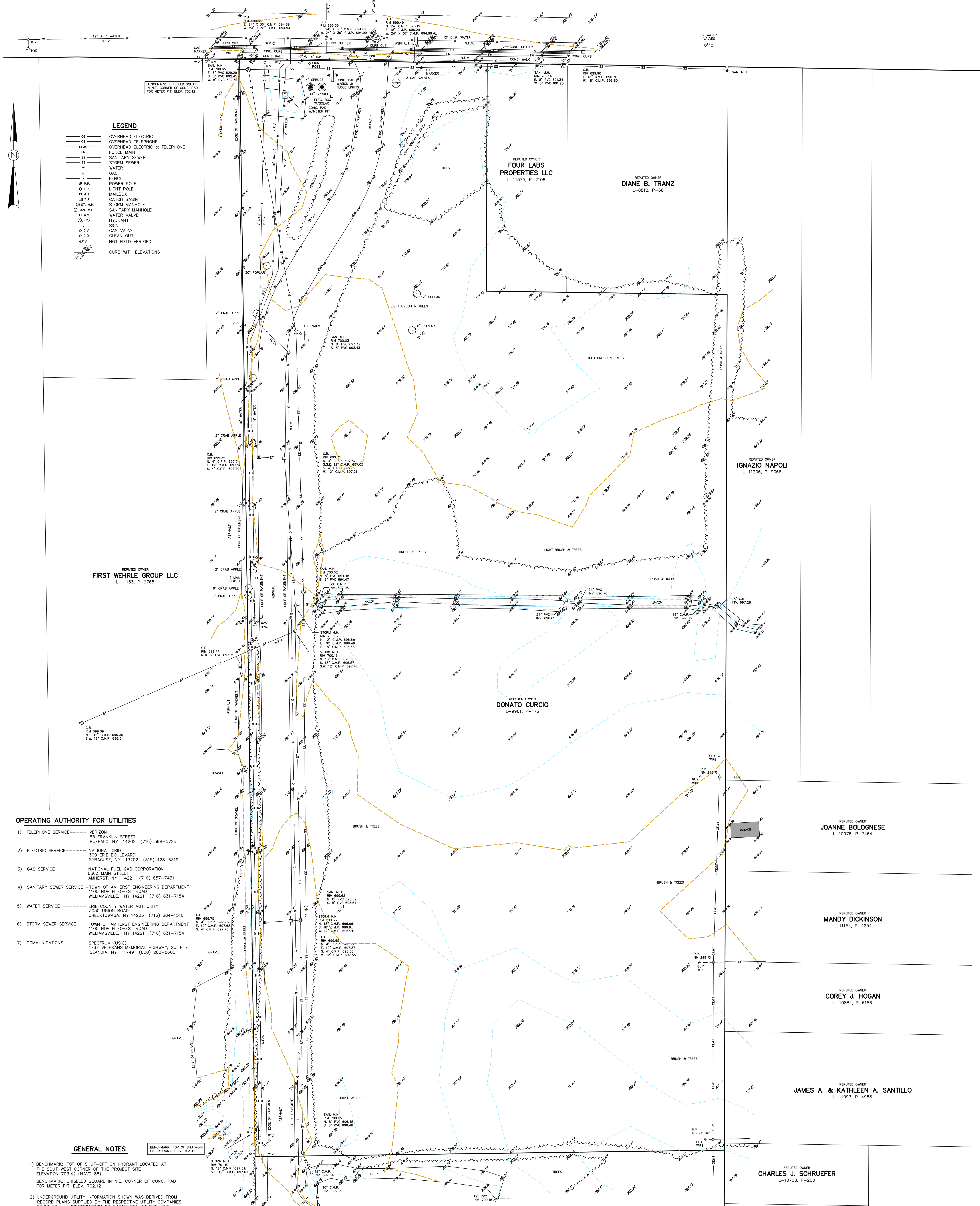


WEHRLE DRIVE (VARYING WIDTHS)

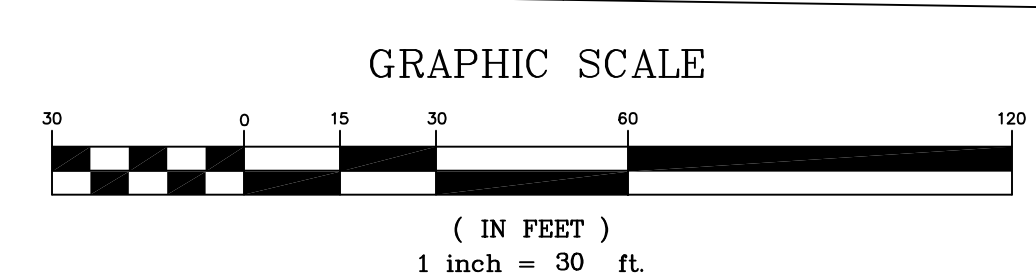
(C.R. 290)



- LEGEND**
- OE — OVERHEAD ELECTRIC
 - OT — OVERHEAD TELEPHONE
 - OET — OVERHEAD ELECTRIC & TELEPHONE
 - FM — FORCE MAIN
 - SS — SANITARY SEWER
 - ST — STORM SEWER
 - W — WATER
 - G — GAS
 - F — FENCE
 - P.P. — POWER POLE
 - L.P. — LIGHT POLE
 - M.B. — MAILBOX
 - C.B. — CATCH BASIN
 - S.M. — STORM MANHOLE
 - S.M.H. — SANITARY MANHOLE
 - W.V. — WATER VALVE
 - H. — HYDRANT
 - S. — SIGN
 - G.V. — GAS VALVE
 - C.O. — CLEAN OUT
 - N.F.V. — NOT FIELD VERIFIED
 - C.W. — CURB WITH ELEVATIONS

- OPERATING AUTHORITY FOR UTILITIES**
- 1) TELEPHONE SERVICE — VERIZON
65 FRANKLIN STREET
BUFFALO, NY 14202 (716) 398-5725
 - 2) ELECTRIC SERVICE — NATIONAL GRID
300 EDE BOULEVARD
SYRACUSE, NY 13202 (315) 428-6319
 - 3) GAS SERVICE — NATIONAL FUEL GAS CORPORATION
630 S. MAIN STREET
AMHERST, NY 14221 (716) 857-7431
 - 4) SANITARY SEWER SERVICE — TOWN OF AMHERST ENGINEERING DEPARTMENT
1150 NORTH FOREST ROAD
WILLIAMSVILLE, NY 14221 (716) 631-7154
 - 5) WATER SERVICE — ERIE COUNTY WATER AUTHORITY
3030 UNION ROAD
CHEEKTOWAGA, NY 14225 (716) 684-1510
 - 6) STORM SEWER SERVICE — TOWN OF AMHERST ENGINEERING DEPARTMENT
1150 NORTH FOREST ROAD
WILLIAMSVILLE, NY 14221 (716) 631-7154
 - 7) COMMUNICATIONS — SPECTRUM (USC)
1767 VETERANS MEMORIAL HIGHWAY, SUITE 7
ISLANDIA, NY 11749 (800) 262-8600

- GENERAL NOTES**
- 1) BENCHMARK: TOP OF SHUT-OFF ON HYDRANT LOCATED AT THE SOUTHWEST CORNER OF THE PROJECT SITE. ELEVATION 703.42 (NAVD 88)
 - 2) BENCHMARK: CHISELED SQUARE IN N.E. CORNER OF CONC. PAD FOR METER PIT. ELEV. 703.52
 - 3) UNDERGROUND UTILITY INFORMATION SHOWN WAS DERIVED FROM RECORD PLANS SUPPLIED BY THE RESPECTIVE UTILITY COMPANIES. PRIOR TO ANY CONSTRUCTION OR EXCAVATION AT SITE, THE PROPER UTILITY AUTHORITY SHOULD BE NOTIFIED.
 - 4) THE UNDERGROUND UTILITIES SHOWN HAVE BEEN LOCATED FROM FIELD SURVEY INFORMATION AND EXISTING DRAWINGS. THE SURVEYOR MAKES NO GUARANTEE THAT THE UNDERGROUND UTILITIES SHOWN COMPRISE ALL SUCH UTILITIES IN THE AREA, EITHER IN SERVICE OR ABANDONED. THE SURVEYOR FURTHER DOES NOT WARRANT THAT THE UNDERGROUND UTILITIES SHOWN ARE IN THE EXACT LOCATION INDICATED ALTHOUGH HE DOES CERTIFY THAT THEY ARE LOCATED AS ACCURATELY AS POSSIBLE FROM INFORMATION AVAILABLE. THE SURVEYOR HAS NOT PHYSICALLY LOCATED THE UNDERGROUND UTILITIES.
 - 5) FOR REFERENCE SEE TOWN OF AMHERST TAX MAP 81.02-3-20.1
 - 6) FOR REFERENCE SEE MAP PREPARED BY PRATT & HUTCH ASSOCIATES, P.C. DATED JANUARY 16, 1988, LAST REVISED APRIL 20, 1995 AND IDENTIFIED AS JOB NO. 88006.
 - 7) PROPERTY LINES & RIGHT OF WAY SHOWN ARE APPROXIMATE IN LOCATION.
 - 8) THIS SURVEY WAS PERFORMED UNDER WINTER CONDITIONS AND IS SUBJECT TO SUCH VARIATIONS AS MAY BE REVEALED AT A LATER DATE. APPROXIMATE GENERAL SNOW DEPTH WAS 6"-8" ON SURVEYED PREMISES.



McINTOSH & McINTOSH, P.C.
CONSULTING ENGINEERS, LAND SURVEYORS, PLANNERS
429 PINE STREET, LOOKPORT, NEW YORK 14094
PHONE 433-2535 PHONE 625-8360

TOPOGRAPHICAL MAP OF PART OF LOT-83, TWP.-11, R.-7, HOLLAND PURCHASE
LOCATION: TOWN OF AMHERST, ERIE COUNTY, NEW YORK

JOB No. 10138 SCALE: 1" = 30' DATE: DECEMBER 20, 2022

© 2022 McINTOSH & McINTOSH, P.C. ALL RIGHTS RESERVED

REVISION	REVISION

NOTE: UNAUTHORIZED ALTERATION OR ADDITION TO THIS MAP IS A VIOLATION OF SECTION 1708, PARAGRAPH 2 OF THE NEW YORK STATE EDUCATION LAW