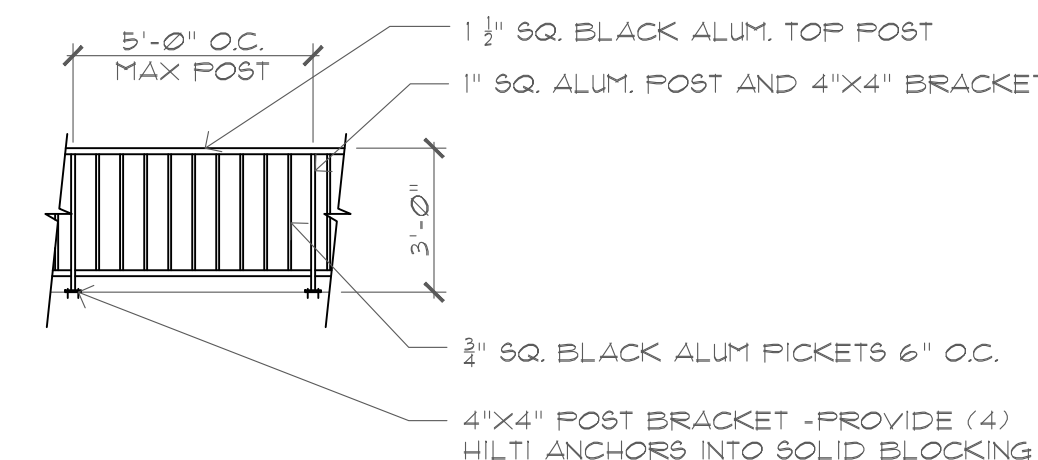
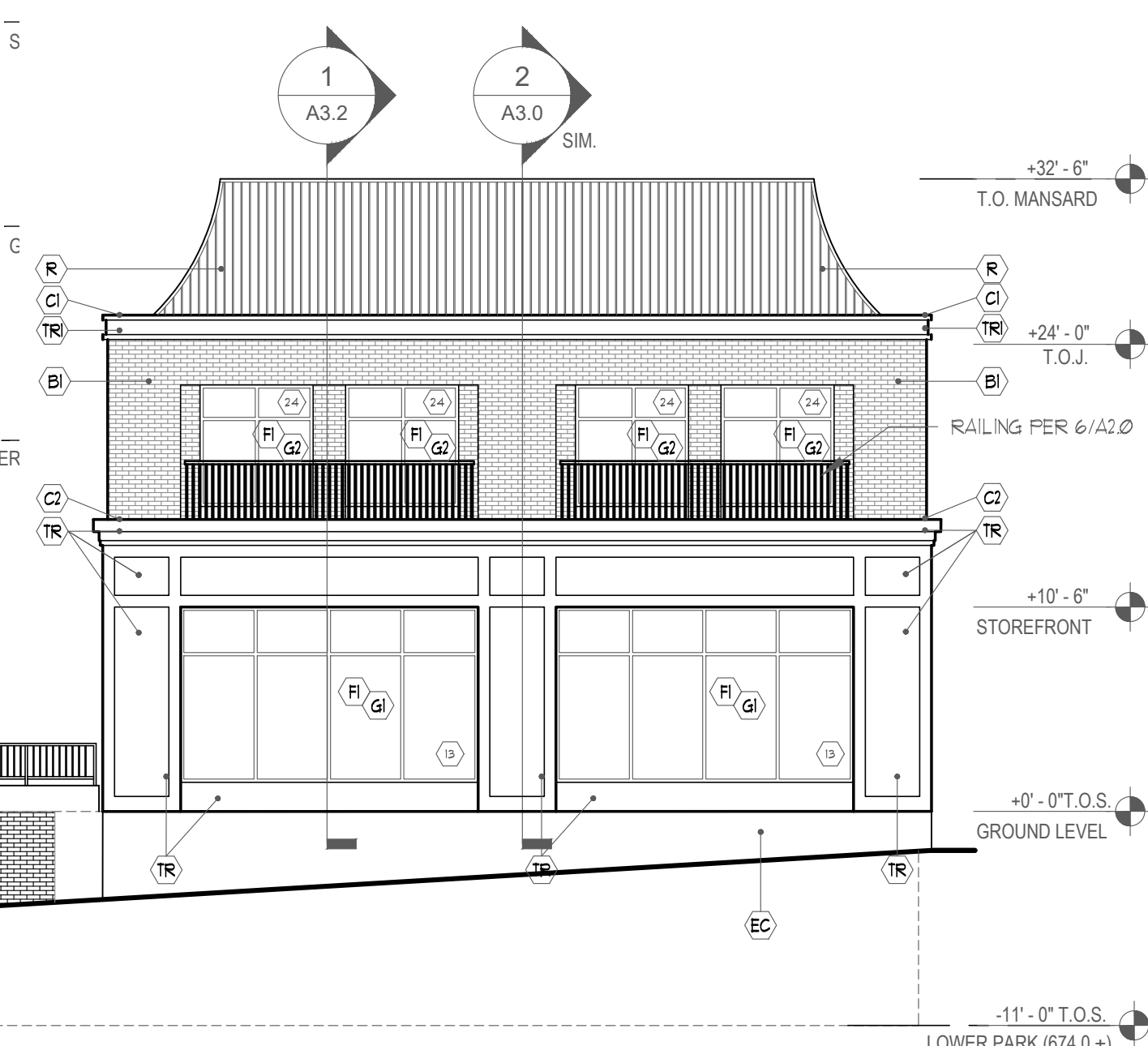


KEY PLAN
N.T.S.

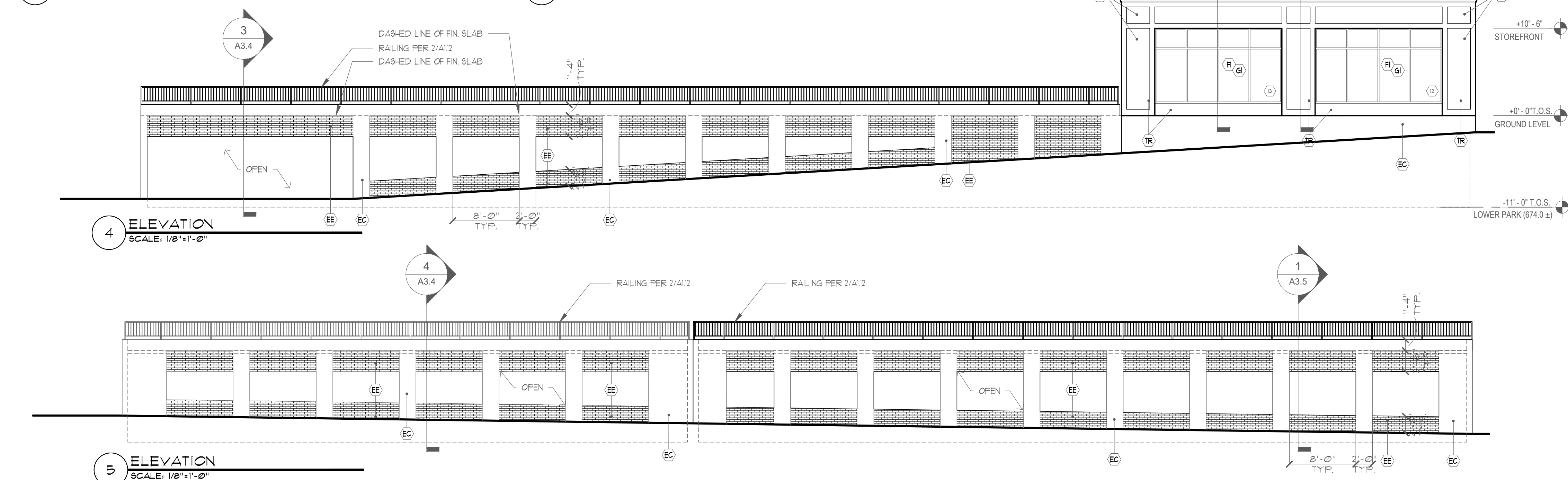


6 2ND FLOOR RAILINGS
SCALE: 1/8"=1'-0"



2 ELEVATION
SCALE: 1/8" = 1'-0"

3 ELEVATION
SCALE: 1/8"=1'-0"



4 ELEVATION
SCALE: 1/8" = 1'-0"

5 ELEVATION
SCALE: 1/8"=1'-0"

ELEVATION KEY NOTES

- COPING**

 - (C1) PREFINISHED METAL GRAVELSTOP / DRIFEDGE, ATAS #2 ASCOT WHITE
 - (C2) PREFINISHED METAL GRAVELSTOP / DRIFEDGE, ATAS #01 CLASSIC BRONZE

ALUMINUM STOREFRONT FRAMING

 - (F1) ALUMINUM FRAMING : COLOR: DARK BRONZE

GLASS

 - (G1) DOUBLE PANE 1" INSULATED GLASS -COLOR CLEAR
 - (G2) SPANDREL GLASS -HARMONY GRAY

GLASS FIBER REINFORCED CONCRETE

 - (GF) ARMSTRONG GLASS FIBER REINFORCED CONCRETE OR APPROVED EQUAL COLOR: SIENNA BUFF (CONTRACTOR TO SEND SAMPLE FOR ARCHITECT APPROVAL PRIOR TO ORDERING)

BRICK

 - (B1) BELDEN THIN BRICK VENEER COLOR: WINTER MIST SANDED RUSTIC (CONTRACTOR TO SEND SAMPLE FOR ARCHITECT APPROVAL PRIOR TO ORDERING)

PVC TRIM

 - (TR) AZEK EXTERIORS TRIM WITH PAINTPRO TECHNOLOGY (PAINTABLE TRIM) COLOR: SW7020 BLACK FOX
 - (TR) AZEK EXTERIORS TRIM WITH PAINTPRO TECHNOLOGY (PAINTABLE TRIM) COLOR: SW7008 ALABASTER

STANDING SEAM METAL ROOF

 - (R) ATAS STANDING SEAM METAL ROOF -DUTCH SEAM COLOR: #20 SLATE GRAY

EXTERIOR LIGHT FIXTURE

 - (LI) "KICHLER LIGHTING" -FRIN OUTDOOR WALL LIGHT MODEL: 5915BKD5 16.75"x6.75"x2.25" ON DIMMER

BREAK METAL

 - (BM) ALUMINUM BREAK METAL TO MATCH STOREFRONT

EXPOSED CONCRETE : FORMLINER

 - (EC) CONCRETE FORMLINER : ARCHITECTURAL POLYMERS REUSABLE LINER - 9/16-M 12"x24" 5/8" LITESTONE RUNNING BOND -MAINTAIN RUINING BOND PATTERN CONTINUOUS THROUGHOUT WALL -SEE BELOW SPEC.
 - (EE) CONCRETE FORMLINER : ARCHITECTURAL POLYMERS REUSABLE LINER - BRICK PATTERN -MAINTAIN RUINING BOND PATTERN CONTINUOUS THROUGHOUT WALL -SEE BELOW SPEC.

GENERAL NOTES:

 - CONTRACTOR SHALL SUBMIT SAMPLES OF ALL FINISH MATERIALS TO ARCHITECT'S OFFICE FOR APPROVALS PRIOR TO CONSTRUCTION.
 - WITH OWNER'S APPROVAL, CONTRACTOR MAY SUBMIT TO ARCHITECT, ALTERNATE MANUFACTURER FINISH PRODUCTS FOR SUBMITTAL APPROVAL. OWNER/ARCHITECT RESERVE THE RIGHT TO REJECT ANY OR ALL ALTERNATES.
 - CONTRACTOR TO COORDINATE WITH ARCHITECT'S OFFICE AND LANDLORD, COLOR AND FINISH MATERIALS SPECIFICATIONS AND THEIR INTENDED LOCATIONS, PRIOR TO INSTALLATION AND CONSTRUCTION.

BOARD FORMED CONCRETE CONCRETE

- USE OF FORM RELEASE TO ENSURE CONSISTENT SURFACE TREATMENT
- ALL VERTICAL SURFACES TO HAVE BOARD FORMED SURFACE TREATMENT
- USE FORM LINERS, USING MITERED CORNERS FOR ALL VERTICAL SURFACES. -TO BE APPROVED BY ARCHITECT PRIOR TO PURCHASE -CLEAN FORMS AND TURNOVER TO BENDERSON**
- CLEAN FORMS AND TURNOVER TO BENDERSON**
- MITER INSIDE CORNERS
- CONCRETE PER STRUCTURAL SPECS.
- CONCRETE TO BE FULLY CONSOLIDATED - CONCRETE TO BE POURED IN 12" LIFTS WITH VIBRATIONS APPLIED BETWEEN LIFTS
- EXPOSED CAST IN PLACE CONCRETE**
- CAST-IN-PLACE ARCHITECTURAL CONCRETE: FORMED CONCRETE THAT IS EXPOSED TO VIEW ON SURFACES OF COMPLETED STRUCTURE OR BUILDING AND THAT REQUIRES SPECIAL CONCRETE MATERIALS, FORMWORK, PLACEMENT, OR FINISHES TO OBTAIN SPECIFIED ARCHITECTURAL APPEARANCE.
- PROVIDE CLEAN DEFECT FREE SURFACES AT ALL EXPOSED CONCRETE ELEMENTS. SURFACES TO BE FREE OF VOIDS, CHIPS, DISCOLORATION, CRACKS OR UNNECESSARY FORM WORK JOINT. ALL EXPOSED CONCRETE, INCLUDING CAST IN PLACE WILL BE FINISHED WITH IN THE TOLERANCES OF ACI 117 CLASS A - $\frac{1}{8}$ " GAP UNDER A FREESTANDING STRAIGHTEDGE
- A. BEGIN CURING CAST-IN-PLACE ARCHITECTURAL CONCRETE IMMEDIATELY AFTER REMOVING FORMS FROM CONCRETE. CURE ACCORDING TO ACI 308.1, BY ONE OR A COMBINATION OF THE FOLLOWING METHODS THAT WILL NOT MOTTLE, DISCOLOR, OR STAIN CONCRETE:
1. MOISTURE CURING: KEEP SURFACES CONTINUOUSLY MOIST FOR NOT LESS THAN SEVEN DAYS WITH THE FOLLOWING MATERIALS:
- A. WATER.
- B. CONTINUOUS WATER-FOG SPRAY.
- RELATED UNFORMED SURFACES: AT TOPS OF WALLS, HORIZONTAL OFFSETS, AND SIMILAR UNFORMED SURFACES ADJACENT TO FORMED SURFACES, STRIKE OFF SMOOTH AND FINISH WITH A TEXTURE MATCHING ADJACENT FORMED SURFACES.
- SMOOTH-FORMED FINISH: AS-CAST CONCRETE TEXTURE IMPARTED BY FORM-FACING MATERIAL, ARRANGED IN AN ORDERLY AND SYMMETRICAL MANNER WITH A MINIMUM OF SEAMS, REMOVE FINS AND OTHER PROJECTIONS EXCEEDING SPECIFIED LIMITS ON FORMED-SURFACE IRREGULARITIES.
- A. FORM-LINER FINISH: PRODUCE A TEXTURED SURFACE FREE OF POCKETS, STREAKS, AND HONEYCOMBS, AND OF UNIFORM APPEARANCE, COLOR, AND TEXTURE.

[illegible]

SPECIAL INFORMATION:
THIS DRAWING PREPARED FOR TENANT
IMPROVEMENTS TO AN EXISTING BUILDING
OR BUILDING CONSTRUCTED BY OTHERS IT
IS UNDERSTOOD THAT ANY WARRANTY
INFORMATION CONCERNING EQUIPMENT
INSTALLED MUST BE FORWARDED TO THE
OWNER AND THAT ANY AND ALL
CONTRACTORS SHALL GUARANTEE THEIR
WORK FOR A PERIOD OF ONE YEAR FROM
THE DATE OF OWNERS ACCEPTANCE.

NOTICE
UNAUTHORIZED ALTERATIONS OF THIS
DOCUMENT ARE IN VIOLATION OF SECTION
#7209 OF THE STATE EDUCATION LAW.

JAMES ALLEN RUMSEY
ARCHITECT

PREPARED FOR

**BENDERSON
DEVELOPMENT**

570 DELAWARE AVE. BUFFALO, NY 14202
BUFFALO, NY 14202
(716) 886-0211

PROPERTY NUMBER: 5202 AREA: -

RETAIL SHELL
4548 MAIN STREET
AMHERST, NY 14226

SEAL:

TITLE
EXTERIOR
ELEVATIONS

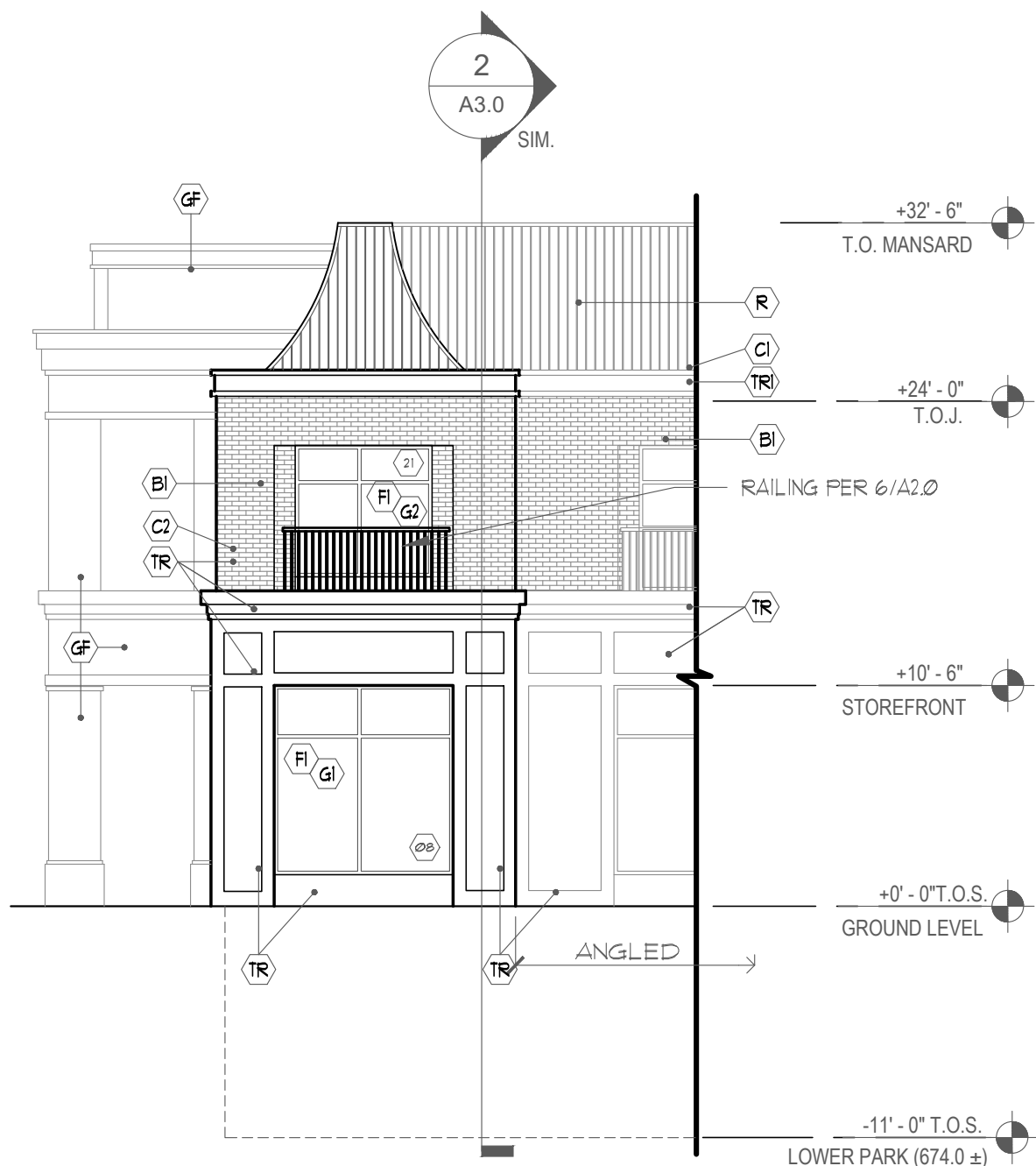
DRAWN BY: CAR
CHECKED BY: JAR
DATE: 8.20.25

DRAWING NO. A2.0

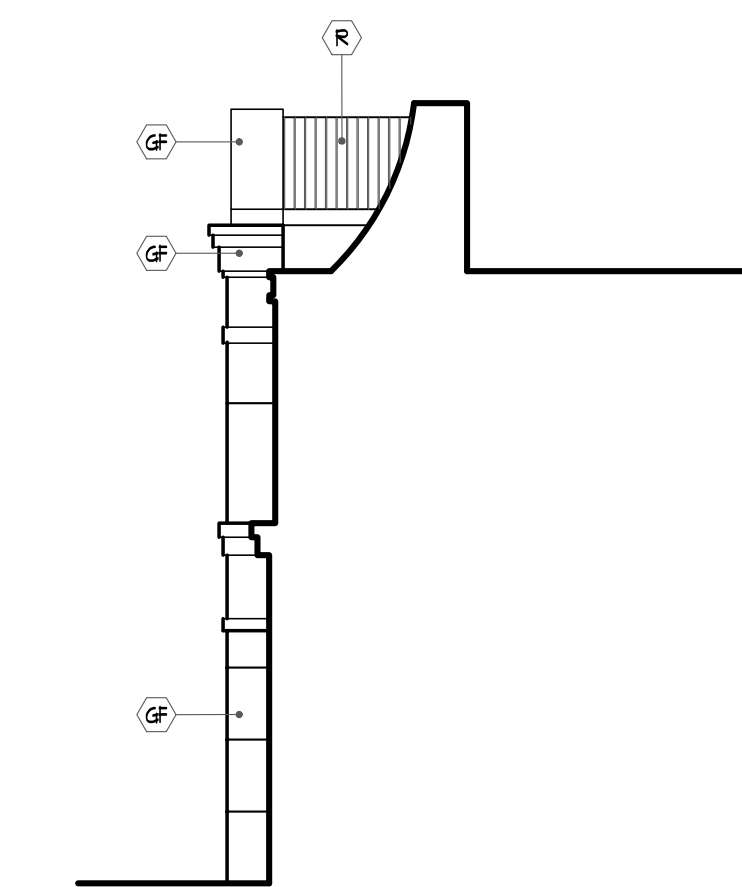
RETAIL SHELL



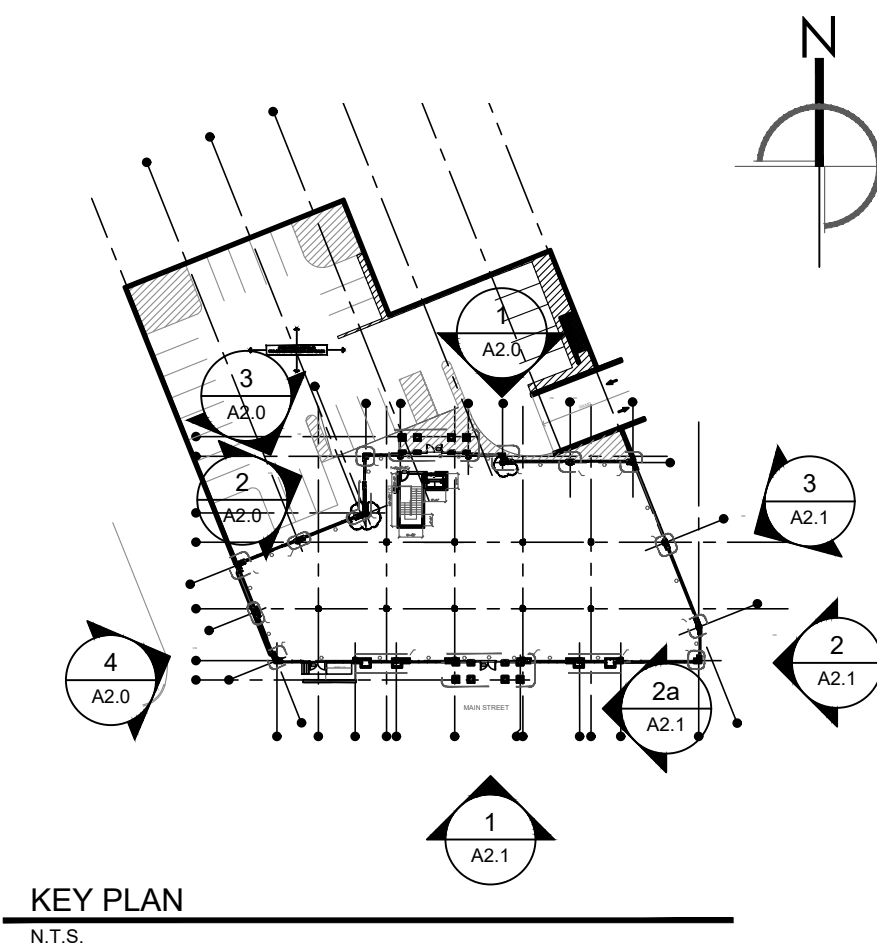
1 ELEVATION
SCALE: 1/8"=1'-0"



2 ELEVATION
SCALE: 1/8"=1'-0"



2a ELEVATION
SCALE: 1/8"=1'-0"



KEY PLAN
N.T.S.

ELEVATION KEY NOTES

- COPING**
- C1 PREFINISHED METAL GRAVELSTOP / DRIPEDGE, ATAS #10 ASCOT WHITE
 - C2 PREFINISHED METAL GRAVELSTOP / DRIPEDGE, ATAS #01 CLASSIC BRONZE
- ALUMINUM STOREFRONT FRAMING**
- F1 ALUMINUM FRAMING : COLOR: DARK BRONZE
- GLASS**
- G1 DOUBLE PANE 1" INSULATED GLASS -COLOR CLEAR
 - G2 SPANDREL GLASS -HARMONY GRAY
- GLASS FIBER REINFORCED CONCRETE**
- GF ARMSTRONG GLASS FIBER REINFORCED CONCRETE OR APPROVED EQUAL. COLOR: SIENNA BUFF (CONTRACTOR TO SEND SAMPLE FOR ARCHITECT APPROVAL PRIOR TO ORDERING)
- BRICK**
- B1 BELDEN THIN BRICK VENEER COLOR: WINTER MIST SANDED RUSTIC (CONTRACTOR TO SEND SAMPLE FOR ARCHITECT APPROVAL PRIOR TO ORDERING)
- RYC TRIM**
- TR AZEK EXTERIORS TRIM WITH PAINTPRO TECHNOLOGY (PAINTABLE TRIM) COLOR: SUT020 BLACK FOX
 - TR AZEK EXTERIORS TRIM WITH PAINTPRO TECHNOLOGY (PAINTABLE TRIM) COLOR: SUT008 ALABASTER
- STANDING SEAM METAL ROOF**
- R ATAS STANDING SEAM METAL ROOF -DUTCH BEAM COLOR: #20 SLATE GRAY
- EXTERIOR LIGHT FIXTURE**
- LI "KICHLER LIGHTING" -FRIN OUTDOOR WALL LIGHT MODEL: 59152BKD5 16.75"X6.75"X8.25" ON DIMMER
- BREAK METAL**
- BM ALUMINUM BREAK METAL TO MATCH STOREFRONT
- EXPOSED CONCRETE : FORMLINER**
- EC CONCRETE FORMLINER : ARCHITECTURAL POLYMERS REUSABLE LINER - 918-M 12"X24" SPLIT LIMESTONE RUNNING BOND -MAINTAIN RUINING BOND PATTERN CONTINUOUS THROUGHOUT WALL -SEE BELOW SPEC.
 - EE CONCRETE FORMLINER : ARCHITECTURAL POLYMERS REUSABLE LINER - BRICK PATTERN -MAINTAIN RUINING BOND PATTERN CONTINUOUS THROUGHOUT WALL -SEE BELOW SPEC.

GENERAL NOTES:

- CONTRACTOR SHALL SUBMIT SAMPLES OF ALL FINISH MATERIALS TO ARCHITECT'S OFFICE FOR APPROVAL PRIOR TO CONSTRUCTION.
- WITH OWNER'S APPROVAL, CONTRACTOR MAY SUBMIT TO ARCHITECT, ALTERNATE MANUFACTURER FINISH PRODUCTS FOR SUBMITTAL APPROVAL. OWNER/ARCHITECT RESERVE THE RIGHT TO REJECT ANY OR ALL ALTERNATES.
- CONTRACTOR TO COORDINATE WITH ARCHITECT'S OFFICE AND LANDLORD, COLOR AND FINISH MATERIALS SPECIFICATIONS AND THEIR INTENDED LOCATIONS, PRIOR TO INSTALLATION AND CONSTRUCTION.

BOARD FORMED CONCRETE CONCRETE

- USE OF FORM RELEASE TO ENSURE CONSISTENT SURFACE TREATMENT.
- ALL VERTICAL SURFACES TO HAVE BOARD FORMED SURFACE TREATMENT
- USE FORM LINERS WITH MITERED CORNERS FOR ALL VERTICAL SURFACES -TO BE APPROVED BY ARCHITECT PRIOR TO PURCHASE -CLEAN FORMS AND TURNOVER TO BENDERSON
- CLEAN FORMS AND TURNOVER TO BENDERSON
- MITER INSIDE CORNERS
- CONCRETE PER STRUCTURAL SPECS.
- CONCRETE TO BE FULLY CONSOLIDATED - CONCRETE TO BE POURED IN 12" LIFTS WITH VIBRATIONS APPLIED BETWEEN LIFTS

EXPOSED CAST IN PLACE CONCRETE

CAST-IN-PLACE ARCHITECTURAL CONCRETE: FORMED CONCRETE THAT IS EXPOSED TO VIEW ON SURFACES OF COMPLETED STRUCTURE OR BUILDING AND THAT REQUIRES SPECIAL CONCRETE MATERIALS, FORMWORK, PLACEMENT, OR FINISHES TO OBTAIN SPECIFIED ARCHITECTURAL APPEARANCE.

PROVIDE CLEAN DEFECT FREE SURFACES AT ALL EXPOSED CONCRETE ELEMENTS. SURFACES TO BE FREE OF Voids, CHIPS, DISCOLORATION, CRACKS OR UNNECESSARY FORM WORK JOINT. ALL EXPOSED CONCRETE INCLUDING CAST IN PLACE WILL BE FINISHED WITH IN THE TOLERANCES OF ACI 11T CLASS A - 1/8" GAP UNDER A FREESTANDING STRAIGHTEDGE

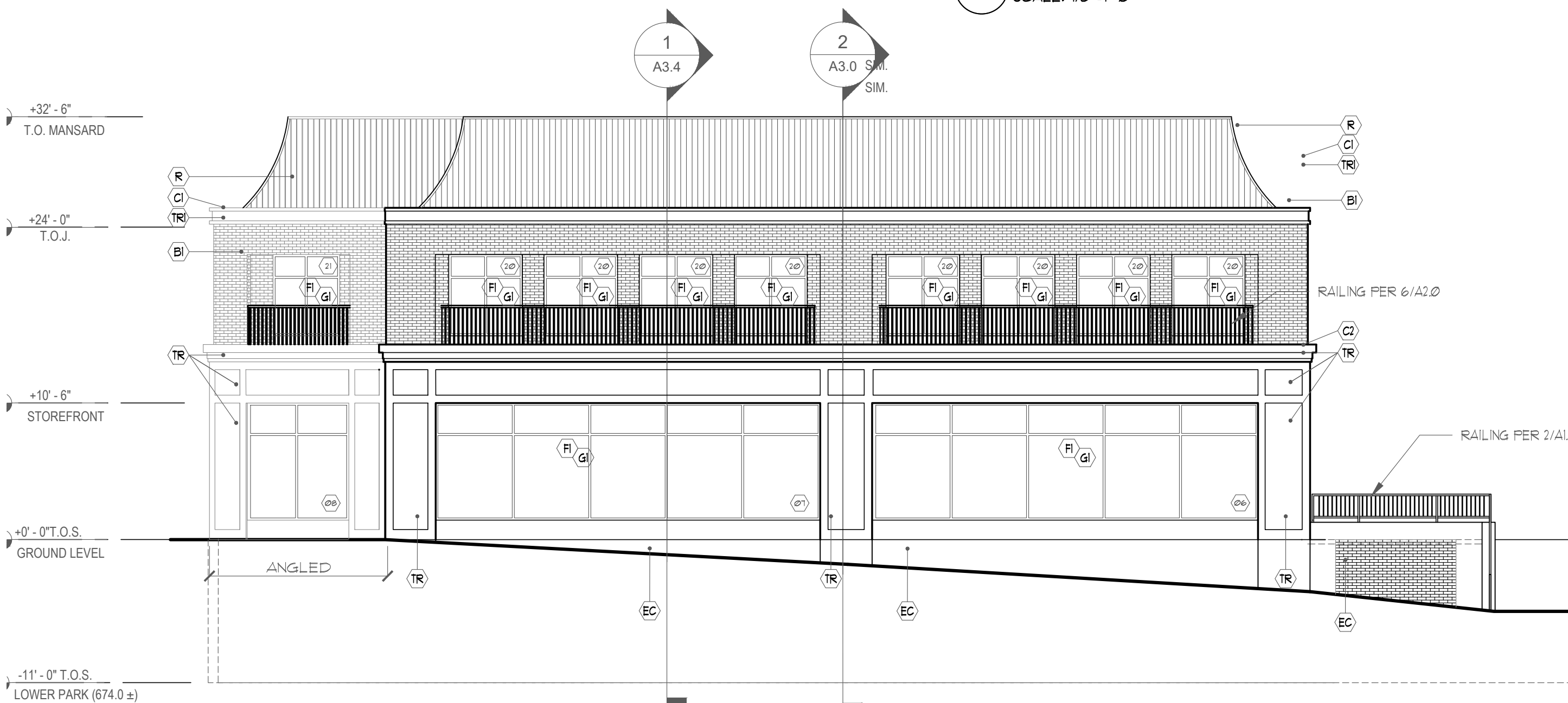
4. BEGIN CURING CAST-IN-PLACE ARCHITECTURAL CONCRETE IMMEDIATELY AFTER REMOVING FORMS FROM CONCRETE. CURE ACCORDING TO ACI 308.1 BY ONE OR A COMBINATION OF THE FOLLOWING METHODS THAT WILL NOT MOTTLE, DISCOLOR, OR STAIN CONCRETE:

1. MOISTURE CURING: KEEP SURFACES CONTINUOUSLY MOIST FOR NOT LESS THAN SEVEN DAYS WITH THE FOLLOWING MATERIALS:
 - A. WATER
 - B. CONTINUOUS WATER-FOG SPRAY.

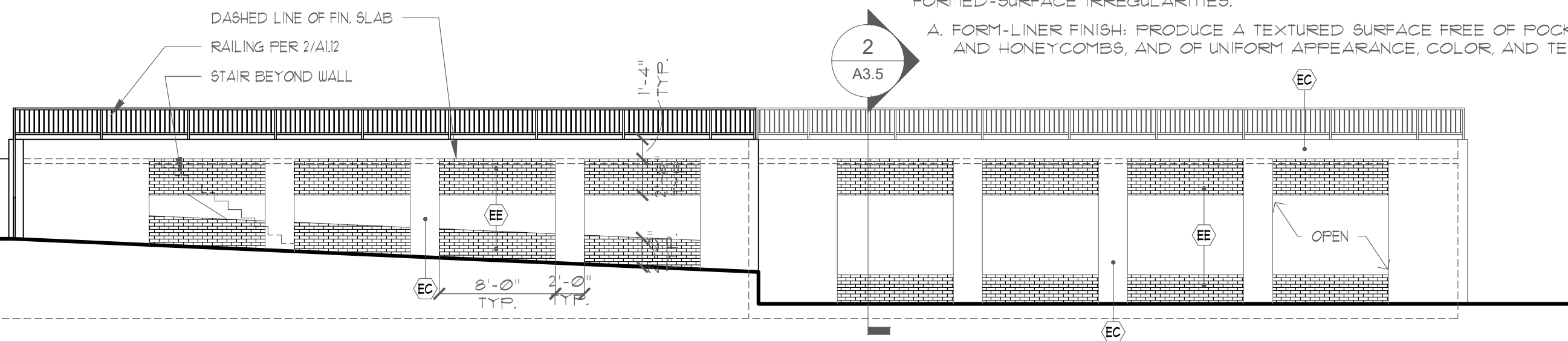
RELATED UNFORMED SURFACES: AT TOPS OF WALLS, HORIZONTAL OFFSETS, AND SIMILAR UNFORMED SURFACES ADJACENT TO FORMED SURFACES, STRIKE OFF SMOOTH AND FINISH WITH A TEXTURE MATCHING ADJACENT FORMED SURFACES.

SMOOTH-FORMED FINISH: AS-CAST CONCRETE TEXTURE IMPARTED BY FORM-FACING MATERIAL, ARRANGED IN AN ORDERLY AND SYMMETRICAL MANNER WITH A MINIMUM OF SEAMS. REMOVE FINS AND OTHER PROJECTIONS EXCEEDING SPECIFIED LIMITS ON FORMED-SURFACE IRREGULARITIES.

4. FORM-LINER FINISH: PRODUCE A TEXTURED SURFACE FREE OF POCKETS, STREAKS, AND HONEYCOMBS, AND OF UNIFORM APPEARANCE, COLOR, AND TEXTURE.



3 ELEVATION
SCALE: 1/8"=1'-0"



4 ELEVATION
SCALE: 1/8"=1'-0"

DRAWING REVISIONS:

NO. DATE BY REMARKS

SPECIAL INFORMATION: THIS DRAWING PREPARED FOR TENANT IMPROVEMENTS TO AN EXISTING BUILDING OR BUILDING CONSTRUCTED BY OTHERS IT IS UNDERSTOOD THAT ANY WARRANTY INFORMATION CONCERNING EQUIPMENT INSTALLED MUST BE FORWARDED TO THE OWNER AND THAT ANY AND ALL CONTRACTORS SHALL GUARANTEE THEIR WORK FOR A PERIOD OF ONE YEAR FROM THE DATE OF OWNERS ACCEPTANCE.

NOTICE UNAUTHORIZED ALTERATIONS OF THIS DOCUMENT ARE IN VIOLATION OF SECTION #7209 OF THE STATE EDUCATION LAW.

JAMES ALLEN RUMSEY ARCHITECT
PREPARED FOR
BENDERSON DEVELOPMENT
570 DELAWARE AVE. BUFFALO, NY 14202
BUFFALO, NY 14202
(716) 886-0211

PROPERTY NUMBER: 5202 AREA:

RETAIL SHELL
4548 MAIN STREET
AMHERST, NY 14226

SEAL:

TITLE
EXTERIOR ELEVATIONS

DRAWN BY: CAR
CHECKED BY: JAR
DATE: 8.20.25
DRAWING NO. A2.1