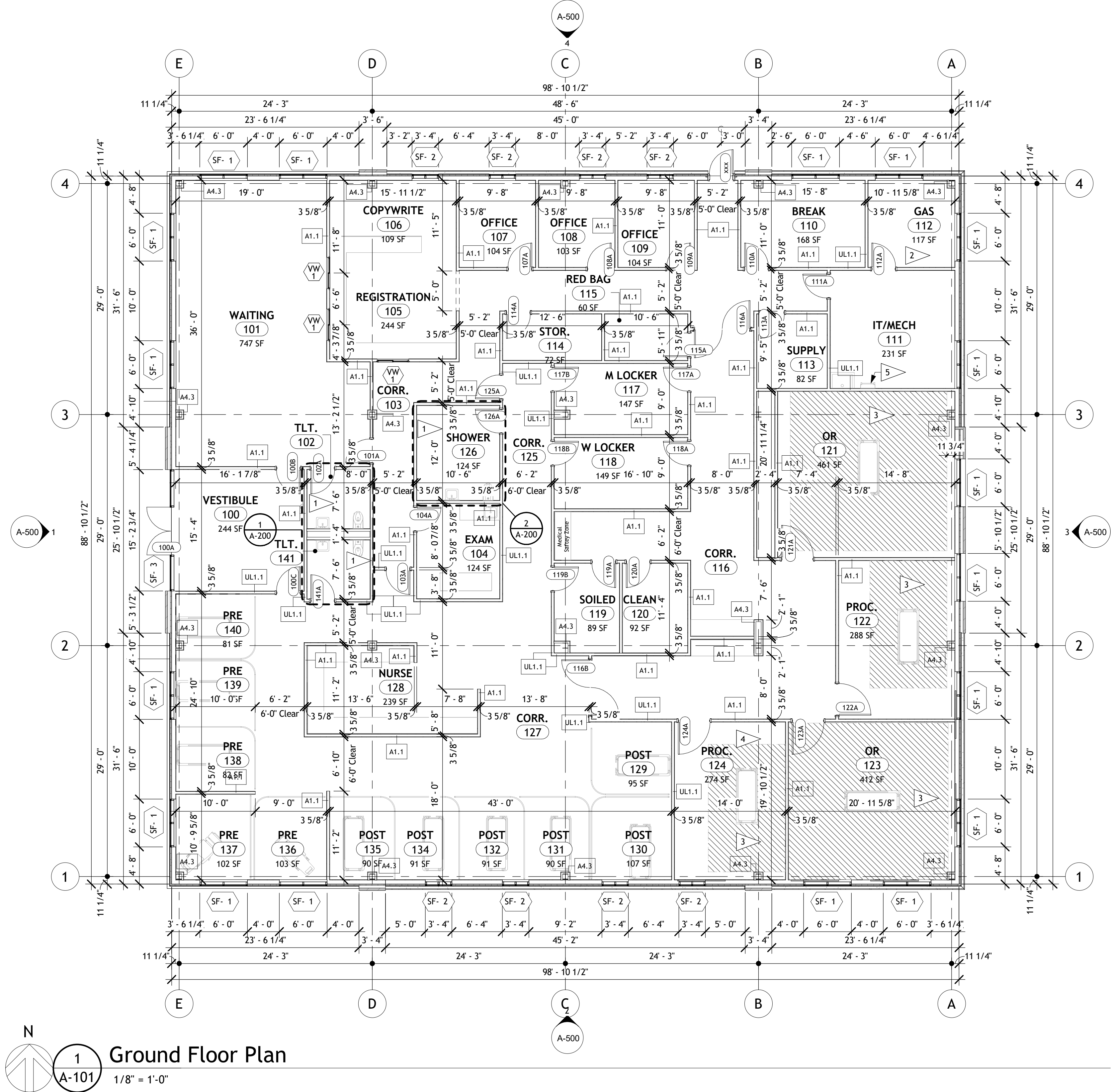


All Rights Reserved. Reuse of these documents without the expressed written permission of Carmina Wood Design is prohibited. WARNING: It is a violation of article 145 of the Penal Code to reproduce, in whole or in part, any architectural drawing without the written consent of the Architect. Any person who violates this article shall be liable to a fine of up to \$5,000.00 or to imprisonment for up to 6 months, or both. The Architect shall not be held responsible for any errors or omissions in this drawing. If altered such R.A., P.E. or L.L.S. shall affix his or her seal, signature, the date the notation "Altered By" and a specific description of the alteration.

© Carmina Wood Design

Autodesk Docs: //24.100 Buffalo Spine and Sports - Maple & Youngs/24.100 Buffalo Spine and Sports - Maple & Youngs.rvt  
4/14/2025 9:55:35 AM



## General Floor Plan Notes

- DO NOT SCALE DRAWINGS.** If there is a dimension that is not shown on the construction documents that requires clarification, request that clarification of the Architect.
- The Contractor shall verify all dimensions, grades, boundaries, and construction documents and immediately report any discrepancies to the architect.
- All work shall conform to the requirements of all Local, State and Federal codes. Local, State and Federal Codes are to take precedence over the drawings and specifications. If discrepancy is noted, inform the Architect immediately and before proceeding with the work.
- All dimensions, notes, finishes and fixtures shown on typical floor plans, sections and details shall apply to all similar, opposite hand, or symmetrical plans, sections or details.
- All dimensions are to face of stud, unless otherwise noted.
- All new walls shall be aligned with the center or nearest edge (as indicated on drawings) of walls, columns, window openings, etc. unless otherwise noted.
- The contractor shall confine operations at the site to areas indicated on the drawings and shall not encumber the site with material and equipment.
- Failure to show or mention minor details shall not be warrant for omission of necessary appurtenances for the normal, usual or proper completion of the Work.
- All Finishes not involved in areas of Construction shall be protected in such a manner that when the work is complete the finishes would be in the same condition they were before the work started. Any unfortunate damage to existing to remain will be restored at no additional cost to the Owner.
- Smoke Tight: areas indicating smoke tight construction shall meet requirements of the local adopted building code. Penetrations and Joints shall be filled with an approved material to limit the free passage of smoke, such as fire rated spray foam.
- If not noted on A-Series drawings please refer to Interior drawings for information on all interior finishes and millwork in the project (I-100, I-101...).

## Floor Plan Legend

- |  |  |
|--|--|
|  | New wall construction  |
|  | New door to be installed size as spec'd, type by owner                   |
|  | New interior/view window to be installed size as spec'd, type by owner   |
|  | New exterior window to be installed size as spec'd, type by owner        |
|  | New curtainwall/storefront to be installed size as spec'd, type by owner |

## Floor Plan Keynotes

- |   |   |
|---|---|
| 1 | Area to receive mold resistant gypsum as spec'd   |
| 2 | Gas room shall comply with section 427 Medical Gas Systems in BCNYS 2020. Room shall be rated and vented as required. |
| 3 | Operating room safety traffic pathway.  |
| 4 | Operating room equipment area.  |
| 5 | Roof access ladder. Refer to A-400s for details.  |

CARMINA WOOD  
DESIGN

Buffalo | Utica | Greensboro

DSG-01  
Buffalo Spine and Pain Center

1692 Maple Road,  
Amherst, NY 14221

REVISIONS:  
No. Description Date

DRAWING NAME:

Ground Floor Plan

Date: 03/21/2025  
Drawn By: A.Philippone  
Checked By: J.Dorobiala

DRAWING NO.

A-101

Project No: 24.1100



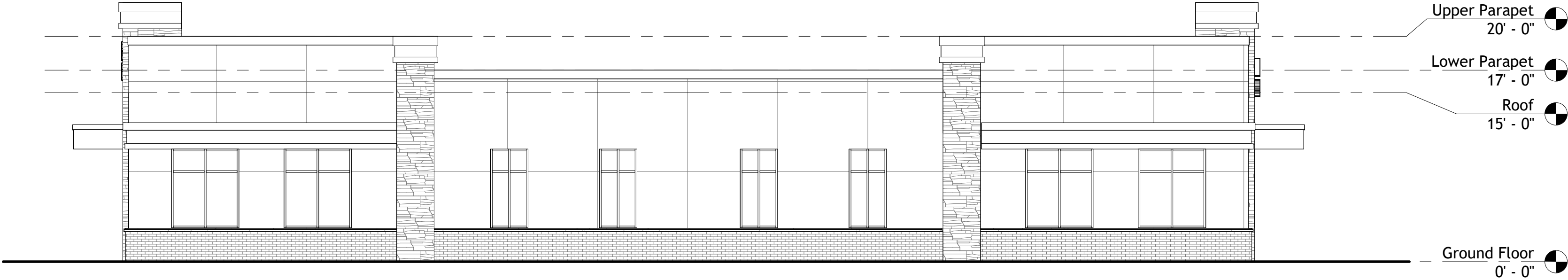
All Rights Reserved. Reuse of these documents without the expressed written permission of Carmina Wood Design is prohibited. WARNING: It is a violation of article 145 of the Penal Code to reproduce, to alter, to disseminate or to use for purposes other than those for which it was created, any document or drawing of an architectural or engineering nature, without the prior written consent of the author or the holder of the intellectual property rights. The author or the holder of the intellectual property rights shall not be held liable for any damage or loss resulting from the use of these documents or drawings. The author or the holder of the intellectual property rights shall not be held liable for any damage or loss resulting from the use of these documents or drawings. The author or the holder of the intellectual property rights shall not be held liable for any damage or loss resulting from the use of these documents or drawings.

© Carmina Wood Design

Autodesk Docs: //24.1100 Buffalo Spine and Sports - Maple & Youngs/24.1100 Buffalo Spine and Sports - Maple & Youngs.rvt  
4/14/2025 9:55:40 AM



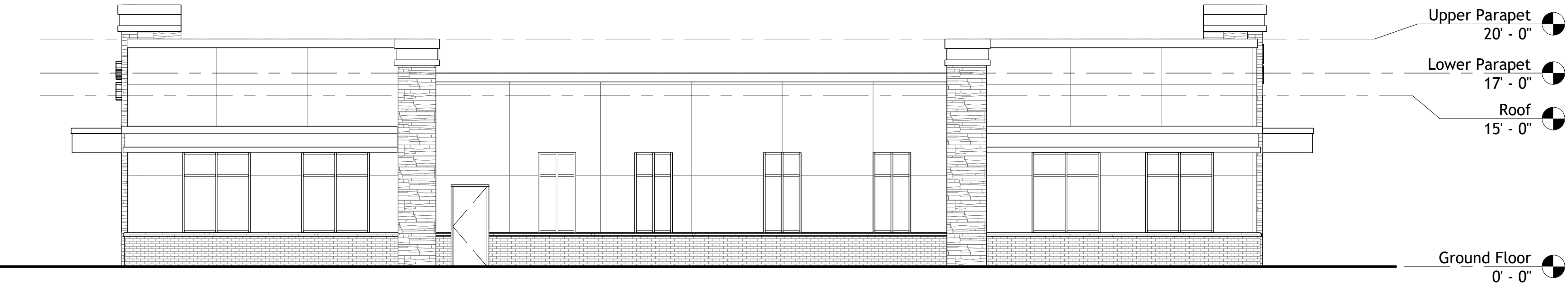
1 North Elevation (Parking)  
A-500  
1/8" = 1'-0"



2 West Elevation (Youngs)  
A-500  
1/8" = 1'-0"



3 South Elevation (Maple)  
A-500  
1/8" = 1'-0"



4 East Elevation  
A-500  
1/8" = 1'-0"

Exterior Finish Schedule			
Callout	Pattern	Material	Description
1		Brick	Brick Texture: To be selected Color: To be selected
2		Brick Soldier Course	Brick Soldier Course Texture: To be selected Color: To be selected
3		Fiber Cement Panel	Fiber Cement Panel Manuf: To be selected Color: To be selected
4		Fiber Cement Trim Board	Fiber Cement Trim Board Manuf: To be selected Color: To be selected
5		Concrete	Concrete Texture: To be selected Color: To be selected
6		Glass	Glass Transparency: To be selected Color: To be selected
7		Spandrel Glass	Spandrel Glass Transparency: To be selected Color: To be selected
8		Aluminum Flashing	Aluminum Flashing Manuf: To be selected Color: To be selected

- NOTES:**
- IMPORTANT!** Before final ordering of materials, coordinate color schemes with architect via use of exterior elevations in color.
  - Refer to written specifications for further requirements for each exterior finish listed above, including finishes for doors and windows.
  - ALL exterior dis-similar materials shall be caulked weather tight with silicone caulk, color to match adjacent materials. Contractor shall coordinate all colors selection of caulk to be used on the job with the Architect using elevations for location and application.

#### Elevation Keynotes

- Awnings to be selected by owner.
- Balcony railings as spec'd. Refer to balcony details on A-xxx.
- Exterior signage to be provided by owner.
- Roof overhang. Refer to x/A-6xx.

#### Exterior Symbol Legend

- Exterior Sconce  
All Exterior sconces shall be 6'-0" above finish floor unless otherwise noted. Coordinate with Electrical for specs & locations.
- Emergency Wall Pack  
Coordinate with Electrical for specs & locations.
- Electrical Switch Gear  
Coordinate with Electrical for specs & locations.
- Gas Meters  
Coordinate with Plumbing for specs & locations.
- Hose Bib  
Coordinate with Plumbing for specs & locations.
- FDC  
Coordinate with Plumbing for specs & locations.
- Knox Box  
Coordinate with Fire Protection for specs & locations.
- ADA Push Button  
Coordinate with Electrical for specs & locations.
- Louver  
Coordinate with Mechanical for specs & locations.
- Overflow discharge  
Coordinate with Plumbing for specs & locations.

Note: Coordinate with Electrical for specs & locations of all light fixtures.

CARMINA WOOD  
DESIGN

Buffalo | Utica | Greensboro

DSG-01  
Buffalo Spine and Pain Center

1692 Maple Road,  
Amherst, NY 14221

REVISIONS:  
No. Description  
Date

DRAWING NAME:

Exterior  
Elevations

Date: 03/21/2025  
Drawn By: A.Farrell  
Checked By: J.Dorobiala

DRAWING NO.

A-500

Project No: 24.1100

Sealed: 03/21/2025