

TOWN OF AMHERST



ERIE COUNTY

NEW YORK

Evergreen Park (75 Tupelo Lane)

Town Supervisor
Shawn A. Lavin

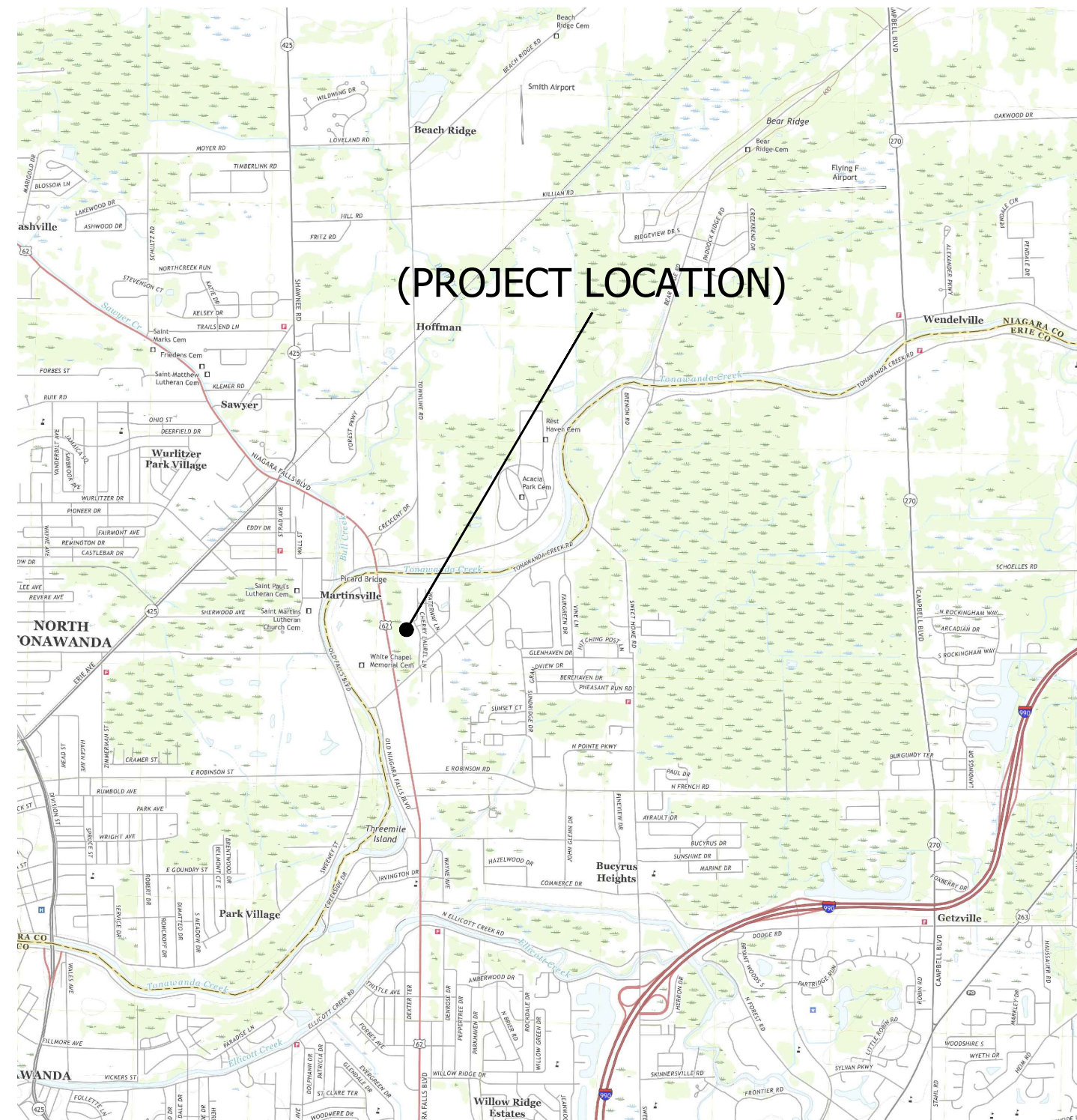
Town Engineer
Jeffrey S. Burroughs, P.E.

Town Councilmembers
Jack Kavanaugh
Angela Marinucci
John Davis
Michael Szukala

Supt. of Highways
Steven Floss

Town Clerk
Francina J. Spoth

Town Attorney
Steven Bengart



DRAWING INDEX

SHEET NO.	DWG. NO.	DESCRIPTION
1	C	COVER PAGE
2	E1	EXISTING CONDITIONS
3	C0	OVERALL PLAN
4	C1	SITE PLAN
5	C2	GRADING PLAN
6	L1	LANDSCAPE PLAN
7	L2	LANDSCAPE DETAILS
8	D1	CONSTRUCTION DETAILS
9	D2	PARK AMENITY DETAILS
10	D3	CONSTRUCTION NOTES

TOWN OF AMHERST
TOWN FACILITY/PARK
5583 MAIN STREET
WILLAMSVILLE, NY 14221
PHONE: (716) 631-7051



EVERGREEN PARK (75 TUPELO LANE)

COVER SHEET

FIELD CREW:

DRAWN BY:

JOB NO.

CHECKED BY:

CHECKED BY:

SCALE: As Shown

DATE:

REVISIONS

BY	DATE

DWG. NO.

C

SHT. NO. 1 OF 10

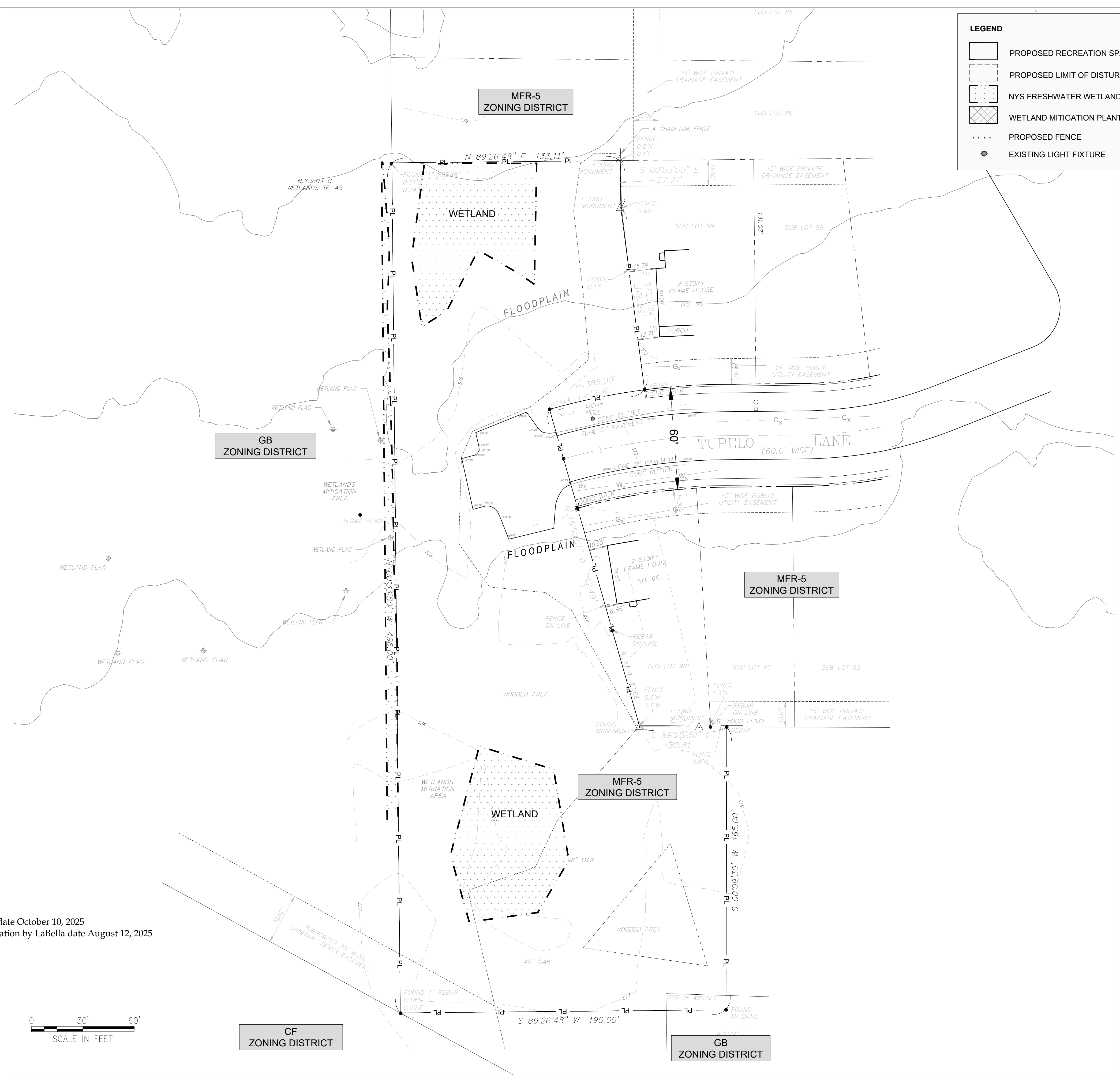


EVERGREEN PARK (75 TUPELO LANE)
EXISTING CONDITIONS

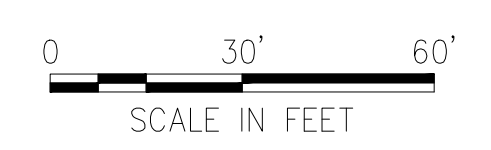
FIELD CREW:	
DRAWN BY:	
JOB NO.:	
CHECKED BY:	
CHECKED BY:	
SCALE: As Shown	
DATE:	
REVISIONS	
BY	DATE

LEGEND

- PROPOSED RECREATION SPACE
- PROPOSED LIMIT OF DISTURBANCE
- NYS FRESHWATER WETLAND
- WETLAND MITIGATION PLANTS
- PROPOSED FENCE
- EXISTING LIGHT FIXTURE



- Notes:**
- Survey by GPI date October 10, 2025
 - Wetland Delineation by LaBella date August 12, 2025

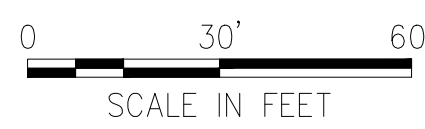


C:\draft\proj\proj_CAD\Tupelo_Park\2025-04-02_Tupelo_Park_Major_Site_Plan_Responses.dwg



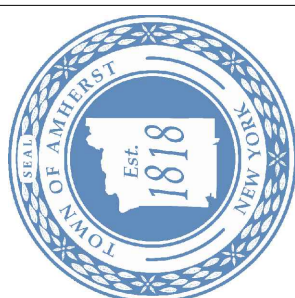
LEGEND

- PROPOSED SITE WORK
- NYS FRESHWATER WETLAND
- PROPOSED FENCE
- EXISTING LIGHT FIXTURE
- PROPOSED MONUMENTS (NYSDEC)



C:\caddwin_projects_CAD\Tupelo_Park\2025-04-02_Tupelo Park Major Site Plan_Responses.dwg

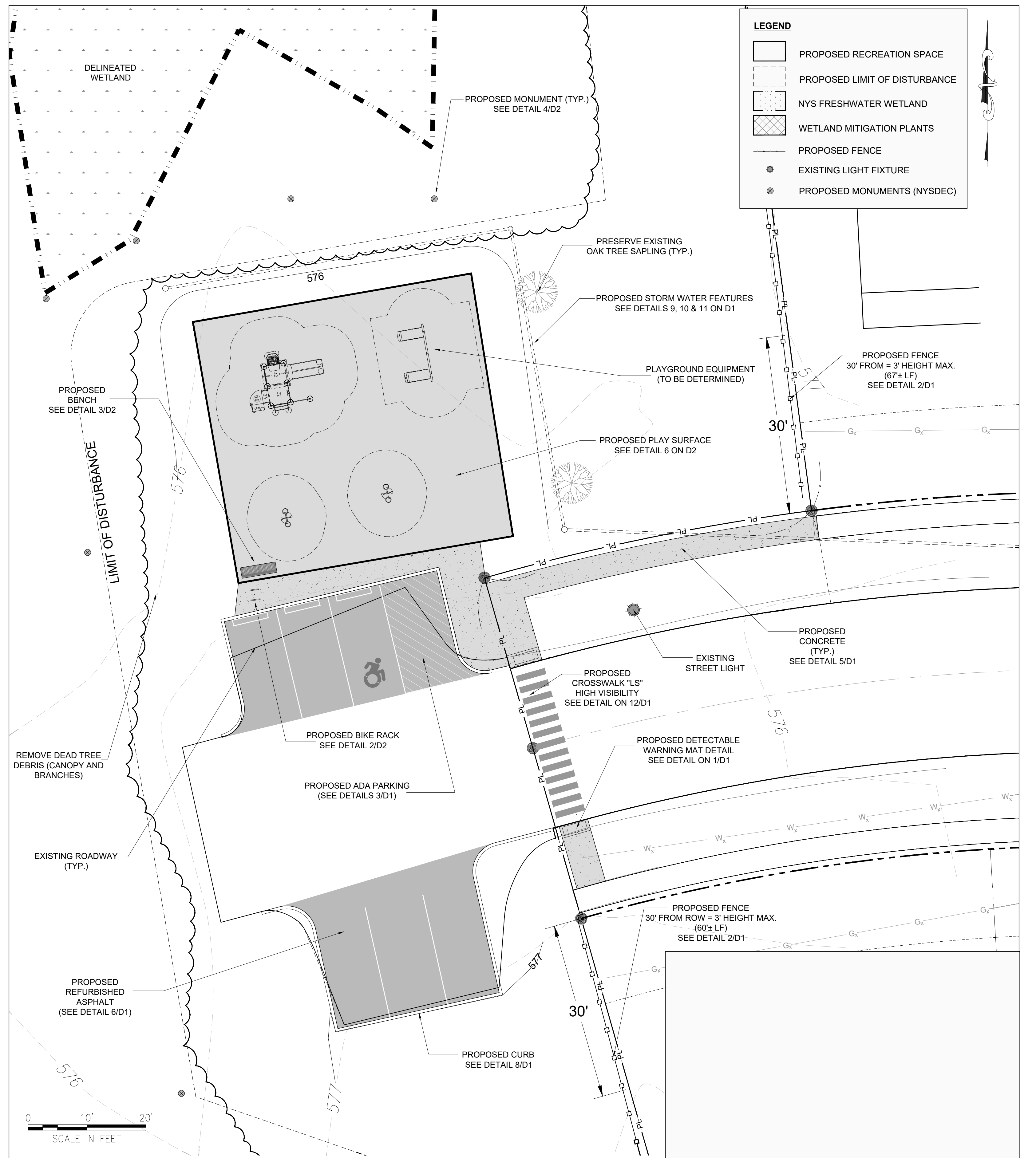
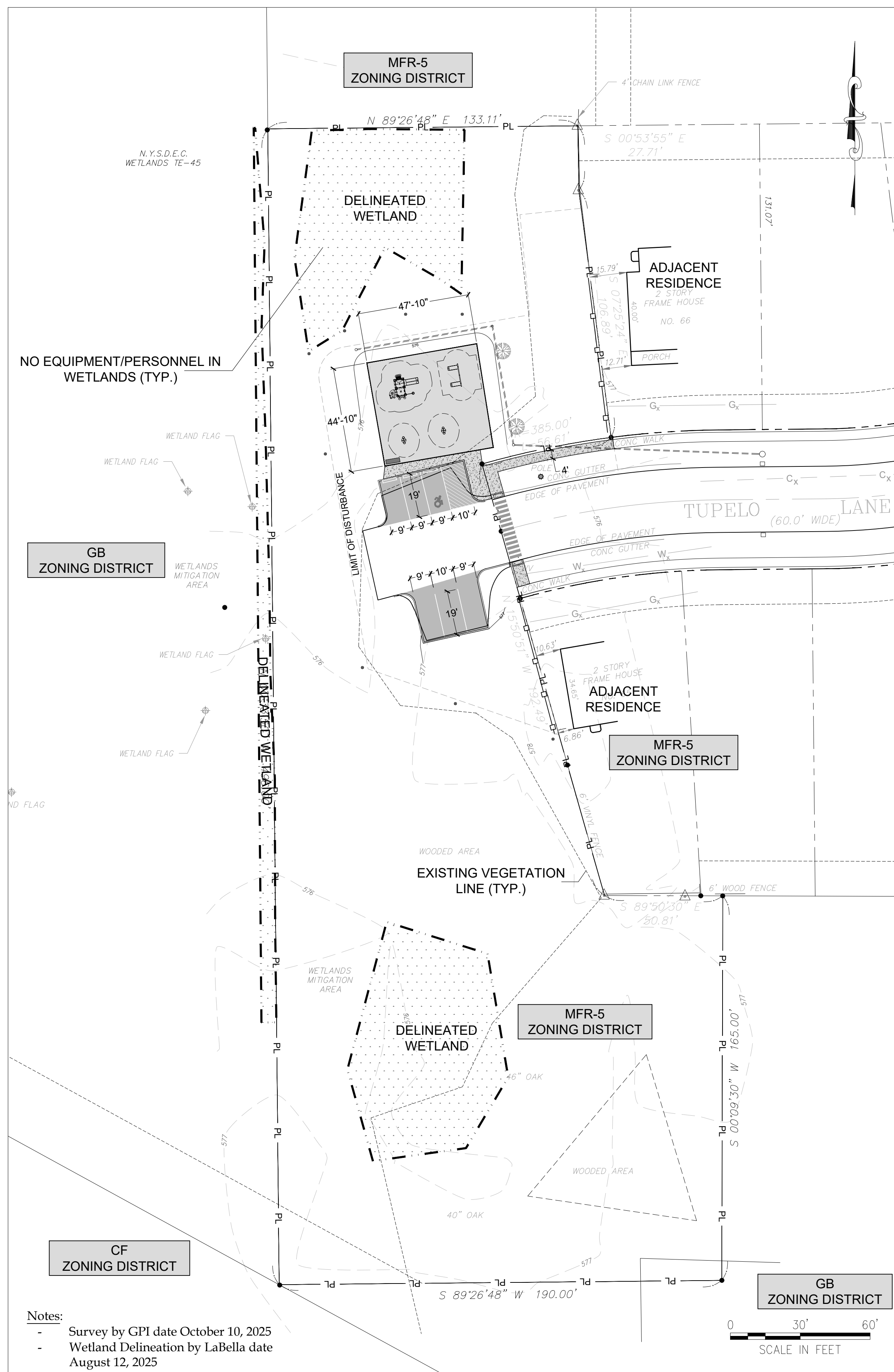
TOWN OF AMHERST
TOWN FACILITY/PARK
 5583 MAIN STREET
 WILLAMSVILLE, NY 14221
 PHONE: (716) 631-7051



EVERGREEN PARK (75 TUPELO LANE)

OVERALL PLAN

FIELD CREW:	
DRAWN BY:	
JOB NO.:	
CHECKED BY:	
SCALE: As Shown	
DATE:	
REVISIONS	
BY	DATE
DWG. NO.	
C0	
SHT. NO. 3 OF 10	



EVERGREEN PARK (75 TUPELO LANE)

SITE PLAN

FIELD CREW:

DRAWN BY:

JOB NO.:

CHECKED BY:

CHECKED BY:

SCALE: As Shown

DATE:

REVISIONS	
BY	DATE

DWG. NO.

C1

C:\drafting_projects_CAD\Tupelo_Park\2025-04-02_Tupelo_Park_Major_Site_Plan_Response.dwg



EVERGREEN PARK (75 TUPELO LANE)
GRADING & UTILITY PLAN

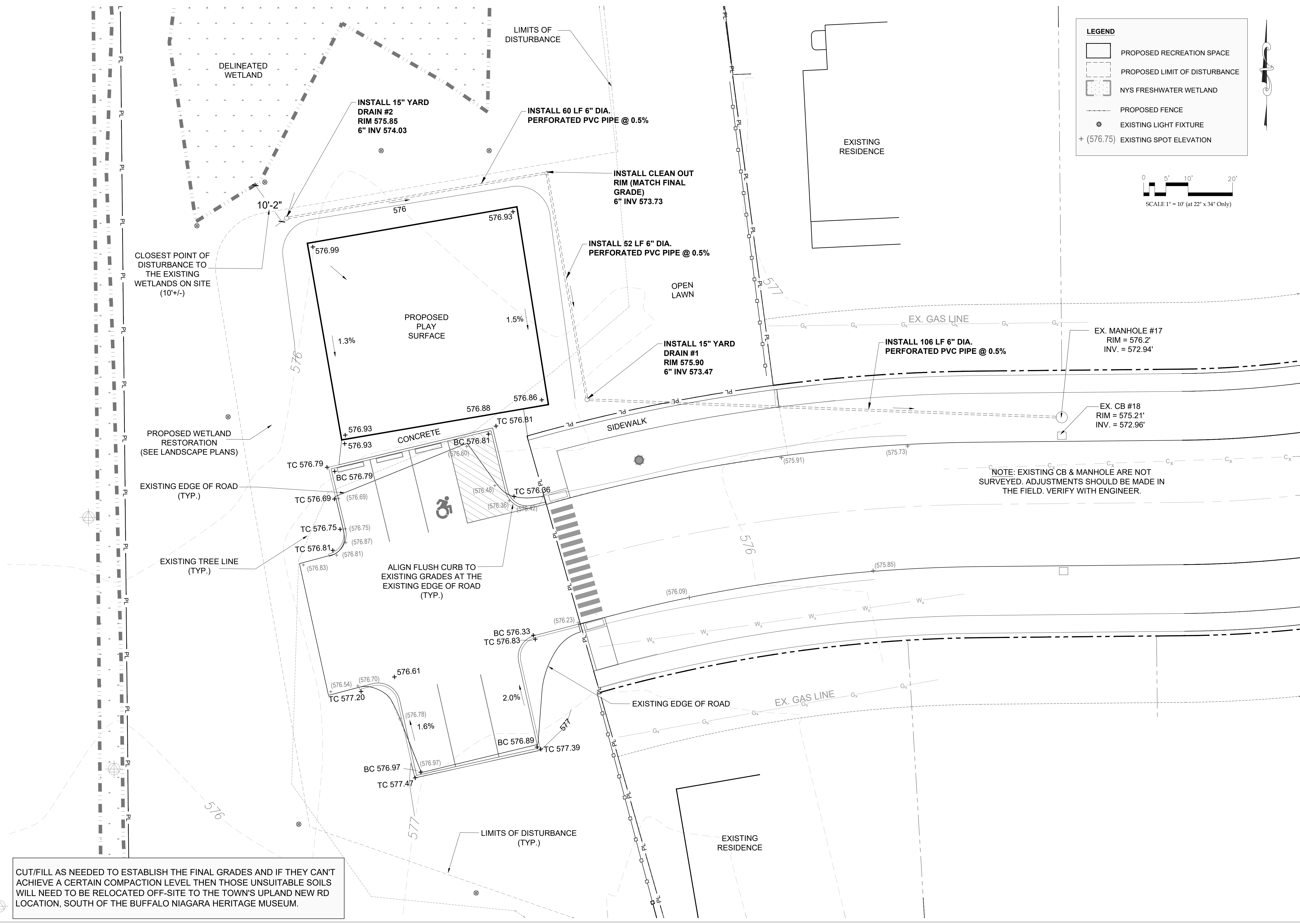
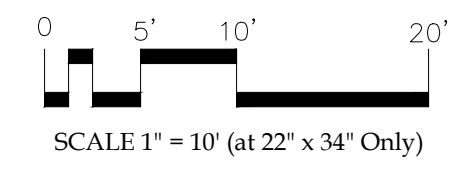
FIELD CREW:
DRAWN BY:
JOB NO.
CHECKED BY:
CHECKED BY:
SCALE: 1" = 10'
DATE:

REVISIONS	
BY	DATE

DWG. NO.
C2
SHT. NO. 5 OF 10

LEGEND

- PROPOSED RECREATION SPACE
- PROPOSED LIMIT OF DISTURBANCE
- NYS FRESHWATER WETLAND
- PROPOSED FENCE
- EXISTING LIGHT FIXTURE
- + (576.75) EXISTING SPOT ELEVATION



CUT/FILL AS NEEDED TO ESTABLISH THE FINAL GRADES AND IF THEY CAN'T ACHIEVE A CERTAIN COMPACTION LEVEL THEN THOSE UNSUITABLE SOILS WILL NEED TO BE RELOCATED OFF-SITE TO THE TOWN'S UPLAND NEW RD LOCATION, SOUTH OF THE BUFFALO NIAGARA HERITAGE MUSEUM.

LEGEND

- PROPOSED RECREATION SPACE
- PROPOSED LIMIT OF DISTURBANCE
- NYS FRESHWATER WETLAND
- WETLAND MITIGATION PLANTS
- PROPOSED FENCE
- EXISTING LIGHT FIXTURE
- PROPOSED DECIDUOUS TREE
- PROPOSED CONIFER TREE
- EXISTING TREE PRESERVED
- PROPOSED MONUMENTS (NYSDEC)

- GRADING/TOPSOIL NOTES:**
- NO PLANT SHALL BE PUT INTO THE GROUND BEFORE ROUGH GRADING HAS BEEN FINISHED AND APPROVED BY THE PROJECT LANDSCAPE ARCHITECT OR EQUAL.
 - THE LANDSCAPE CONTRACTOR SHALL PROVIDE AMENDED PLANTING SOIL AS PER THE CONTRACT SPECIFICATIONS.
 - SOIL DEPTH SHOULD BE AS LISTED BELOW WITH A 2/3 TOPSOIL TO 1/3 COMPOST MIX. EXISTING SOIL ON SITE WHICH MEETS THE CONTRACT SPECIFICATIONS MAY BE USED. REMOVE SUB GRADE AND OTHER GRAVEL FILL IN PLANTING AREAS ON SITE.
- GROUND COVER BEDS: PER DETAIL
LAWN AREAS: 6" DEPTH
SHRUB/PLANT BEDS: PER DETAIL
TREE PIT: PER DETAIL

Best Management Practices: Restoration Seed Mixes

Restoration Seed Mixes

Riparian - Wetland Species

Common Name	Species	Group
Swamp Milkweed	<i>Asclepias incarnata</i>	Forb
Bluejoint Grass	<i>Calamagrostis canadensis</i>	Grass
Cosmos Sedge	<i>Carex comosa</i>	Sedge
Nodding Sedge	<i>Carex crinita</i>	Sedge
Hop Sedge	<i>Carex lupulina</i>	Sedge
Lurid Sedge	<i>Carex lurida</i>	Sedge
Fox Sedge	<i>Carex vulpinoidea</i>	Sedge
Riverbank Wild Rye	<i>Elymus riparius</i>	Grass
Virginia Wild Rye	<i>Elymus virginicus</i>	Grass
Joe-Pye Weed	<i>Eutrochium purpureum</i>	Forb
Reed Meadow Grass	<i>Glyceria grandis</i>	Grass
Common Rush	<i>Juncus effusus</i>	Rush
Cardinal Flower	<i>Lobelia cardinalis</i>	Forb
Foxglove Beard-Tongue	<i>Penstemon digitalis</i>	Forb
Woolgrass	<i>Scirpus cyperinus</i>	Sedge
Nodding Bulrush	<i>Scirpus pendulus</i>	Sedge
Rough Goldenrod	<i>Solidago rugosa</i>	Forb
Showy Goldenrod	<i>Solidago speciosa</i>	Forb
New England Aster	<i>Symphoricarpos novae-angliae</i>	Forb
Tall Vervain	<i>Verbena hastata</i>	Forb

Restoration Tips

- Remove invasive species using recommended BMP. In areas with significant invasives species cover, manage species for at least 3 years before restoring native plants.
- Select appropriate seed mix and make substitutions based on availability. Diversity is important, try to plant at least 12 species.
- Keep a variety of grasses, sedges and forbs, and when in doubt, lean heavier into the grasses and sedges.
- Plant in the fall, ahead of a rain or snow pack to protect the seed and to allow for over-wintering.
- Monitor your site and remove invasive species as they emerge.
- You may mow your restoration during year 1, but moving forward allow your native plants to flower and seed. The additional seed will begin to reform the native seedbank.
- After a few years, consider adding diversity to your restoration through seed, seedlings and plugs.
- Mixes were developed in partnership with the Lake Erie Watershed Protection Alliance (LEWPA) with the purpose of increasing the resiliency of native restoration after invasive species removal efforts.

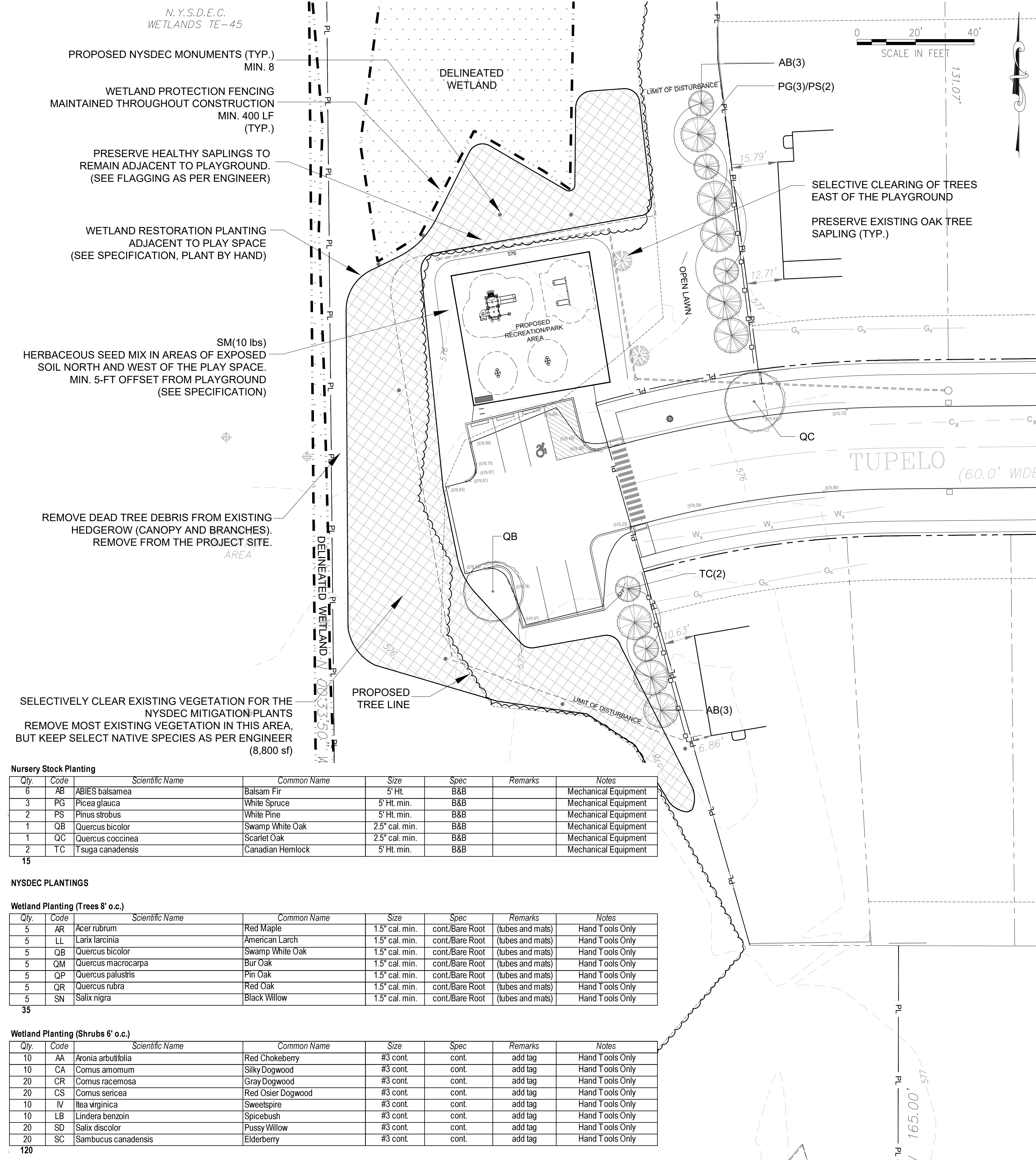
Upland (Dry-Mesic) Species

Common Name	Species	Group
Common Milkweed	<i>Asclepias syriaca</i>	Forb
Showy Ticktrefoil	<i>Desmodium canadense</i>	Legume
Flat-Topped Aster	<i>Doellingeria umbellata</i>	Forb
Canada Wild Rye	<i>Elymus canadensis</i>	Grass
Virginia Wild Rye	<i>Elymus virginicus</i>	Grass
Round-headed Bush Clover	<i>Lespedeza capitata</i>	Legume
Bee Balm	<i>Mandarda fistulosa</i>	Forb
Foxglove Beard-Tongue	<i>Penstemon digitalis</i>	Forb
Hairy Beard-Tongue	<i>Penstemon hirsutus</i>	Forb
Blackeyed Susan	<i>Rudbeckia hirta</i>	Forb
Tall Coneflower	<i>Rudbeckia laciniata</i>	Forb
Little Blue Stem	<i>Schizachyrium scoparium</i>	Grass
Zig-zag Goldenrod	<i>Solidago flexicaulis</i>	Forb
Narrow-leaved Goldenrod	<i>Solidago graminifolia</i>	Forb
Early Goldenrod	<i>Solidago juncea</i>	Forb
Golden Alexander	<i>Zizia aurea</i>	Forb

Find a list of Native Plant Suppliers at www.wnyprism.org/management

Partnership to Protect Western New York From Invasive Species

Logo for WNY PRISM, LEWPA, and SUNY Buffalo State.



Nursery Stock Planting

Qty.	Code	Scientific Name	Common Name	Size	Spec	Remarks	Notes
6	AB	<i>ABIES balsamea</i>	Balsam Fir	5' Ht.	B&B		Mechanical Equipment
3	PG	<i>Picea glauca</i>	White Spruce	5' Ht. min.	B&B		Mechanical Equipment
2	PS	<i>Pinus strobus</i>	White Pine	5' Ht. min.	B&B		Mechanical Equipment
1	QB	<i>Quercus bicolor</i>	Swamp White Oak	2.5" cal. min.	B&B		Mechanical Equipment
1	QC	<i>Quercus coccinea</i>	Scarlet Oak	2.5" cal. min.	B&B		Mechanical Equipment
2	TC	<i>Tsuga canadensis</i>	Canadian Hemlock	5' Ht. min.	B&B		Mechanical Equipment

NYSDEC PLANTINGS

Wetland Planting (Trees 8' o.c.)

Qty.	Code	Scientific Name	Common Name	Size	Spec	Remarks	Notes
5	AR	<i>Acer rubrum</i>	Red Maple	1.5" cal. min.	cont./Bare Root	(tubes and mats)	Hand Tools Only
5	LL	<i>Larix laricina</i>	American Larch	1.5" cal. min.	cont./Bare Root	(tubes and mats)	Hand Tools Only
5	QB	<i>Quercus bicolor</i>	Swamp White Oak	1.5" cal. min.	cont./Bare Root	(tubes and mats)	Hand Tools Only
5	QM	<i>Quercus macrocarpa</i>	Bur Oak	1.5" cal. min.	cont./Bare Root	(tubes and mats)	Hand Tools Only
5	QP	<i>Quercus palustris</i>	Pin Oak	1.5" cal. min.	cont./Bare Root	(tubes and mats)	Hand Tools Only
5	QR	<i>Quercus rubra</i>	Red Oak	1.5" cal. min.	cont./Bare Root	(tubes and mats)	Hand Tools Only
5	SN	<i>Salix nigra</i>	Black Willow	1.5" cal. min.	cont./Bare Root	(tubes and mats)	Hand Tools Only

Wetland Planting (Shrubs 6' o.c.)

Qty.	Code	Scientific Name	Common Name	Size	Spec	Remarks	Notes
10	AA	<i>Aronia arbutifolia</i>	Red Chokeberry	#3 cont.	cont.	add tag	Hand Tools Only
10	CA	<i>Cornus amomum</i>	Silky Dogwood	#3 cont.	cont.	add tag	Hand Tools Only
20	CR	<i>Cornus racemosa</i>	Gray Dogwood	#3 cont.	cont.	add tag	Hand Tools Only
20	CS	<i>Cornus sericea</i>	Red Osier Dogwood	#3 cont.	cont.	add tag	Hand Tools Only
10	IV	<i>Itea virginica</i>	Sweetshrub	#3 cont.	cont.	add tag	Hand Tools Only
10	LB	<i>Lindera benzoin</i>	Spicebush	#3 cont.	cont.	add tag	Hand Tools Only
20	SD	<i>Salix discolor</i>	Pussy Willow	#3 cont.	cont.	add tag	Hand Tools Only
20	SC	<i>Sambucus canadensis</i>	Elderberry	#3 cont.	cont.	add tag	Hand Tools Only

Herbaceous Seed Mix

Qty.	Code	Scientific Name	Common Name	Size	Spec	Remarks	Notes
10	SM	BMP Riparian - Wetland Species Mix	(see seed specification)	1,200 SF	10 lbs		(exposed soil)

TOWN OF AMHERST
TOWN FACILITY/PARK
5583 MAIN STREET
WILLAMSVILLE, NY 14221
PHONE: (716) 631-7051

EVERGREEN PARK (75 TUPELO LANE)

LANDSCAPE PLAN

FIELD CREW:
DRAWN BY:
JOB NO.
CHECKED BY:
CHECKED BY:
SCALE: 1" = 20'
DATE:
REVISIONS
BY DATE
DWG. NO.
L1
SHT. NO. 6 OF 10

C:\caddwin_projects_CAD\Tupelo_Park\2025-04-02_Tupelo_Park_Matj_Site_Plan_Response.dwg

CONSTRUCTION & PLANTING INSTRUCTIONS :

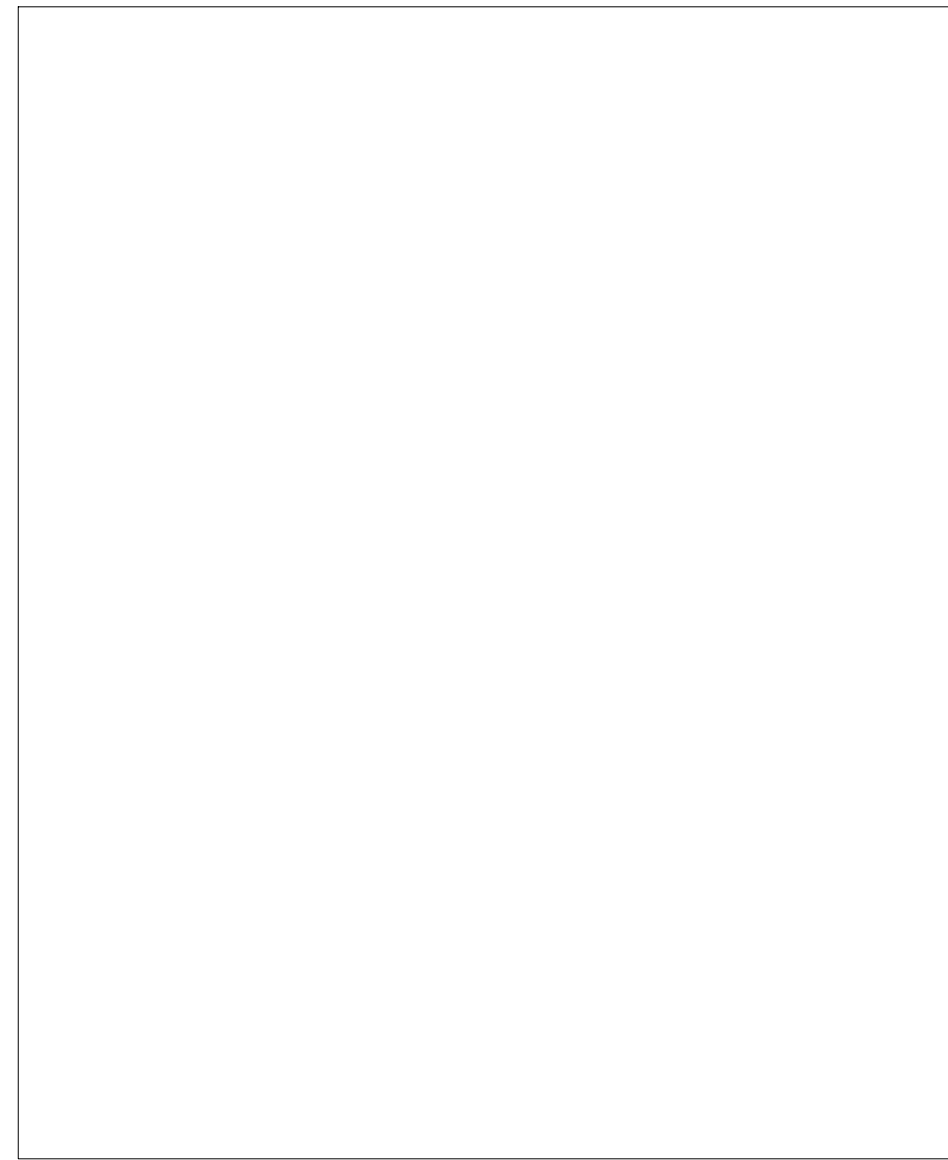
- LANDSCAPE CONTRACTOR SHALL LOCATE AND VERIFY THE EXISTENCE OF ALL UTILITIES PRIOR TO STARTING WORK. CONTACT DIG SAFELY NY TWO FULL BUSINESS DAYS BEFORE PLANTING. (48 HOUR MIN.)
- ALL WETLANDS SHALL BE SURVEYED & CLEARLY MARKED BY THE CONTRACTOR PRIOR TO PLANTING.
- THE LANDSCAPE CONTRACTOR SHALL REFER TO THE CONTRACT SPECIFICATIONS FOR ADDITIONAL REQUIREMENTS. THE LANDSCAPE CONTRACTOR SHALL REFER TO THE PLANT LIST FOR SEASONAL REQUIREMENTS RELATED TO THE TIME OF PLANTING.
- LANDSCAPE CONTRACTOR SHALL SUPPLY ALL MATERIALS FOR THE COMPLETION OF ALL LANDSCAPE WORK ITEMS ASSOCIATED WITH THIS INSTALLATION PER LANDSCAPE PLANS AND DETAILS.
- LANDSCAPE CONTRACTOR SHALL COORDINATE WITH THE LANDSCAPE ARCHITECT ANY FIELD ADJUSTMENTS OF NURSERY STOCK PLANT LOCATIONS THAT ARE IN CONFLICT WITH EXISTING VEGETATION, UNDERGROUND OBSTRUCTIONS OR UTILITIES. LANDSCAPE CONTRACTOR SHALL CLUMP BARE ROOT STOCK AS INDICATED IN PLANT SCHEDULE TO AVOID CONFLICTS.
- ALL PLANT MATERIAL SHALL CONFORM AND BE INSTALLED TO THE GUIDELINES ESTABLISHED BY THE CURRENT ANSI Z60.1.
- LANDSCAPE CONTRACTOR SHALL PROVIDE CONFIRMATION OF PLANT AVAILABILITY WITHIN 14 DAYS OF AWARD OF CONTRACT. ALL PLANT MATERIAL SHALL BE APPROVED BY THE ENGINEER PRIOR TO PLANTING.
- NO MOTORIZED VEHICLES/EQUIPMENT SHALL BE USED WITHIN OR PROXIMATE TO DESIGNATED WETLANDS.
- PLAN NOTES ARE NOT INTENDED TO BE A SUBSTITUTE FOR APPROVAL OF INSTALLATION PRACTICES OF THE CONTRACTOR.
- WITH THE EXCEPTION OF THE NURSERY STOCK MATERIAL, ALL PLANTS SHALL BE BALLED AND BURLAP. CONTAINER OR BARE ROOT MATERIAL AS INDICATED ON THE PLANT SCHEDULE. CONTAINER PLANTS MAY BE CONSIDERED BASED ON AVAILABILITY OF BARE ROOT MATERIAL AND MUST BE APPROVED IN ADVANCE OF ORDERING BY THE LANDSCAPE ARCHITECT.
- NO GRADING OR FILLING SHALL TAKE PLACE ON SITE DUE TO THE PRESENCE OF WETLANDS.
- STAKING PLANTS IS AT THE DISCRETION OF THE LANDSCAPE CONTRACTOR.

BARE ROOT PLANTING:

- ALL WOODY DEBRIS AND OTHER MATERIALS THAT CONFLICT WITH PLANTING SHALL BE REMOVED FROM THE SITE AND DISPOSED OF PROPERLY, WITHOUT THE USE OF MOTORIZED VEHICLES/EQUIPMENT AS NOTED.
- HAND TOOLS SHOULD BE USED ON THE PROJECT SITE FOR ALL WETLAND PLANTINGS. THE EXISTING SOIL AND WOOD CHIPS ARE TO BE UTILIZED WHEN PLANTING IN WETLAND AREAS.
- MATS MAY BE USED TO CART PLANT MATERIAL TO THE PLANTING LOCATION. NO RUTS OR SOIL COMPACTION SHALL BE CREATED ON THE PROJECT SITE.
- ONCE THE BARE ROOT TREE/SHRUB LEAVES THE NURSERY, IT MUST BE PLANTED AS SOON AS POSSIBLE, BUT WITHIN 1 WEEK AT THE LONGEST. IF PLANTING IS DELAYED PLACE IN A COOL ENVIRONMENT AT 38-45° F WITH CIRCULATION BETWEEN PLANTINGS. IDEALLY, THE BOXES SHOULD BE KEPT REFRIGERATED.
- ALL BARE ROOT PLANT MATERIAL MUST BE PROCURED FROM A SOURCE WITHIN NEW YORK STATE, PENNSYLVANIA OR OHIO AND WITHIN USDA AGRICULTURAL RESEARCH SERVICE PLANT HARDINESS ZONES 4, 5 AND 6 A.
- ONLY TRUE NATIVE FORMS OF THE BARE ROOT SPECIES ARE PRESCRIBED, NOT HYBRIDS OR CULTIVARS.
- BARE ROOT PLANTS MUST BE PLANTED BEFORE BUD BREAK (LATE MARCH TO EARLY MAY DEPENDING ON WEATHER CONDITIONS).
- KEEP THE ROOTS MOIST AT ALL TIMES, BUT ALLOW EXCESS WATER TO DRAIN FROM THE ROOTS. DO NOT LEAVE ROOTS IN A BUCKET. MOLD CAN BECOME AN ISSUE.
- TREES AND SHRUBS SHALL BE PLANTED IN A RANDOM PATTERN THAT AVOIDS STRAIGHT LINES OR ROWS AT THE DENSITY SPECIFIED ON THE PLANT SCHEDULE.
- PROVIDE A 2" DIAMETER MULCHED RING AROUND ALL TREES AND SHRUBS. SUPPLY AND INSTALL SHREDDED HARDWOOD MULCH (WITH NO ADDED COLOR) TO A DEPTH OF 2". DO NOT ALLOW MULCH TO CONTACT TRUNK OF TREE/SHRUB.
- PROVIDE A TREE TUBE FOR EACH NEWLY PLANTED BARE ROOT TREE. PLACE TUBE OVER SEEDLING, FLUSH WITH SOIL, HAMMER WOODEN STAKE FIRMLY INTO THE GROUND 2-3" AWAY FROM SEEDLING, AND FIRMLY ATTACH TUBE TO STAKE.
- WATER TREE/SHRUB WITHIN 1 HOUR OF PLANTING UNTIL THE SURROUNDING SOIL IS MOIST BUT NOT SOGGY.

MAINTENANCE & RESTORATION

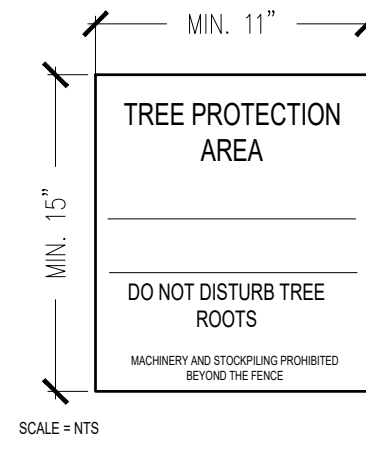
- LANDSCAPE CONTRACTOR SHALL REPAIR ANY AREAS WITHIN OR OUTSIDE OF THE PROJECT LIMITS THAT ARE DAMAGED BY CONSTRUCTION ACTIVITIES. DISTURBED LAWN AREAS SHOULD BE DECOMPACTED AS NECESSARY AND RECEIVE TOPSOIL, SEED AND MULCH.
- ALL LANDSCAPING PLANTINGS (INCLUDING GRASS) SHALL BE GUARANTEED FOR A PERIOD OF 1 YEAR STARTING AFTER THE PROJECT ACHIEVES SUBSTANTIAL COMPLETION. CONTRACTOR SHALL REPLACE AS NEEDED AND IN KIND ANY PLANTINGS THAT ARE DAMAGED OR NOT ALIVE THROUGHOUT THE GUARANTEE PERIOD.
- THE LANDSCAPE CONTRACTOR SHALL MAINTAIN TREES UNTIL SUBSTANTIAL COMPLETION ACCEPTANCE. MAINTAIN PLANTS BY: WATERING THOROUGHLY TWICE DURING THE FIRST 24 HOUR PERIOD AFTER PLANTING; WATERING WEEKLY WHEN RAINFALL IS LESS THAN 1" PER WEEK; MAINTAINING INTEGRITY OF ANY STAKES AND TREE/SHRUB PROTECTION MATERIALS; REPOSITIONING ANY PLANTS THAT ARE LEANING.
- LANDSCAPE CONTRACTOR SHALL INSPECT SITE AT THE END OF WARRANTY PERIOD AND MAKE ANY NECESSARY PLANT REPLACEMENTS. REMOVE ANY STAKES AND BELTING FROM TREES, ADJUST TREES THAT ARE NOT STRAIGHT, ETC.
- ALL PLANTS SHALL BE WATERED THOROUGHLY TWICE DURING THE FIRST 24 HOUR PERIOD AFTER PLANTING. ALL PLANTS SHALL THEN BE WATERED WEEKLY, IF NECESSARY, DURING THE FIRST GROWING SEASON.
- THE CONTRACTOR SHALL USE CARE ALONG THE EDGES OF THE PROPERTY TO AVOID DAMAGE TO THE EXISTING TREES TO REMAIN ROOT SYSTEMS. NOTE THAT DEMO OF THE EXISTING PAVEMENT ADJACENT TO THE TREES TO REMAIN WILL NEED TO BE DONE CAREFULLY.
- 6" MINIMUM OF SCREENED TOPSOIL SHALL BE PLACED IN ALL DISTURBED AREAS IN ACCORDANCE WITH NYSDOT TOPSOIL AND PLACEMENT SPECS. AREAS SHALL BE FINE GRADED, FERTILIZED, SEEDED AND MULCHED.
- TOPSOIL SHALL ALSO BE PLACED AS NEEDED IN EXISTING GRASSED AREAS TO REMAIN A O.B.E. BARE SPOTS AND LOW AREAS SHALL BE FINE GRADED AND FILLED AS NEEDED. ALL AREAS SHALL BE SEEDED, FERTILIZED AND MULCHED.
- THE LANDSCAPE CONTRACTOR SHALL REFER TO THE CONTRACT SPECIFICATIONS FOR ADDITIONAL REQUIREMENTS.



TREE PROTECTION NOTES:

- PRIOR TO ANY CONSTRUCTION ACTIVITY, ALL TREE PRESERVATION MEASURES MUST BE IMPLEMENTED.
- PRIOR TO CONSTRUCTION CONTRACTOR SHALL VERIFY ALL UTILITY LOCATIONS.
- TREE PROTECTION FENCING SHALL REMAIN INTACT THROUGHOUT ALL CONSTRUCTION ACTIVITY.
- PRIOR TO THE SITE VISIT ALL TREE PRESERVATION AREAS SHALL BE STAKED OUT ON SITE BY SURVEY.
- NO MATERIALS OR EQUIPMENT SHALL BE STORED, STOCKPILED OR OPERATED WITHIN TREE PROTECTION AREAS.
- TREE PROTECTED AREAS WILL BE LEFT AS NATURAL AS POSSIBLE.
- THE CONTRACTOR CHOSEN FOR THIS WORK WILL BE AN EXPERIENCED TREE SERVICE FIRM THAT HAS SUCCESSFULLY COMPLETED TREE PROTECTION, ROOT PRUNING, AND TRIMMING WORK, SIMILAR TO THAT REQUIRED FOR THIS PROJECT.
- IN AREAS OF EXCAVATION NEAR TREE, IDENTIFY AND CUT ROOTS IN CONSULTATION WITH OWNER.
- REMOVE POORLY ATTACHED AND RUBBING LIMBS. CLEAN THE CROWN OF DEAD, DISEASED AND WEAK LIMBS. THINNING OF HEALTHY LIMBS IS NOT RECOMMENDED AT THIS TIME.
- ANY NECESSARY TRENCHING SHALL BE IMMEDIATELY BACKFILLED WITH REMOVED SOIL OR OTHER HIGHLY ORGANIC SOIL.
- AN AIR SPADE IS TO BE USED TO EXCAVATE DOWN TO MINIMUM OF 2', SEE DETAIL 7/D4.
- THERE WILL BE NO EXCAVATION FOR PROPOSED SITE WORK WITHIN FENCED AREA.

DETAIL B

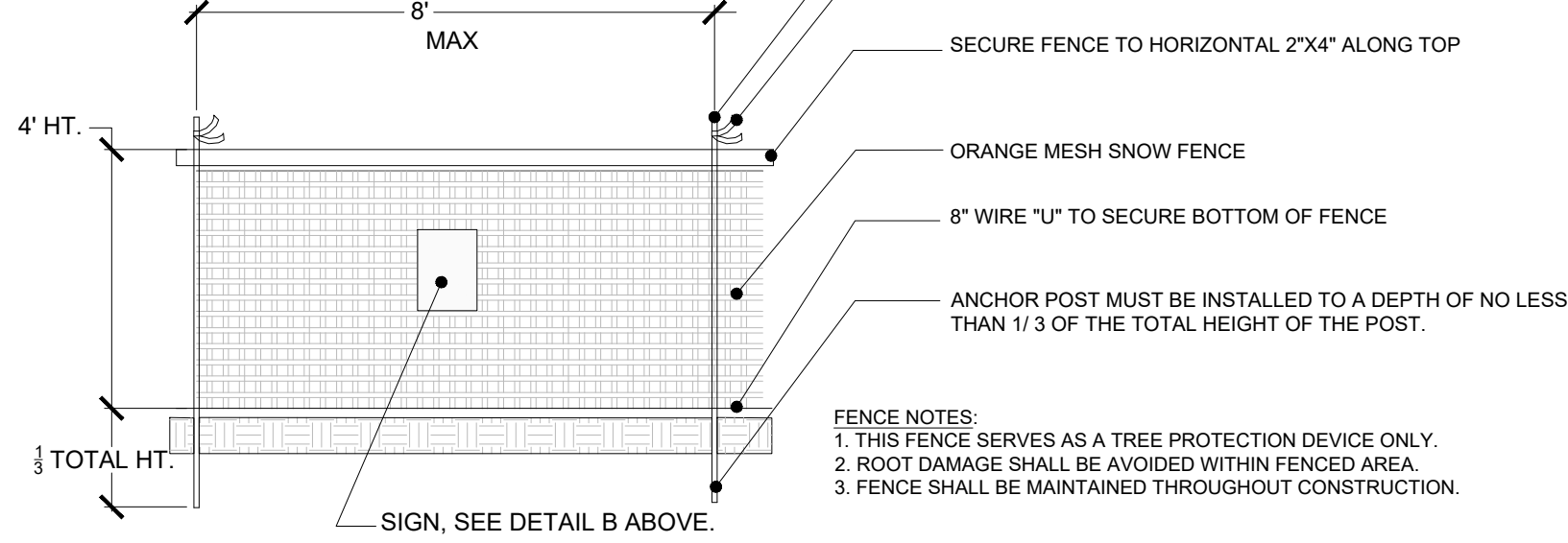


SCALE: NTS

SIGN DETAIL

- ATTACHMENTS OF SIGNS TO TREES IS PROHIBITED.
- SIGNS SHOULD BE MADE OF VINYL OR PLASTIC.
- SIGNS SHOULD BE PROPERLY MAINTAINED, PENALTIES WILL BE ENFORCED FOR REMOVAL OF SIGNS.
- AVOID INJURY TO ROOTS WHEN PLACING POSTS FOR THE SIGNS.
- SIGNS SHOULD BE POSTED 50' O.C. AND WITHIN 20' OF THE BEGINNING AND END OF EACH FENCE TO BE VISIBLE TO ALL CONSTRUCTION PERSONNEL.
- SIGNS TO BE SECURELY FASTENED TO THE FENCE OR FENCE POSTS.
- SIGNS TO HAVE A WHITE BACKGROUND AND ORANGE OR RED TEXT.

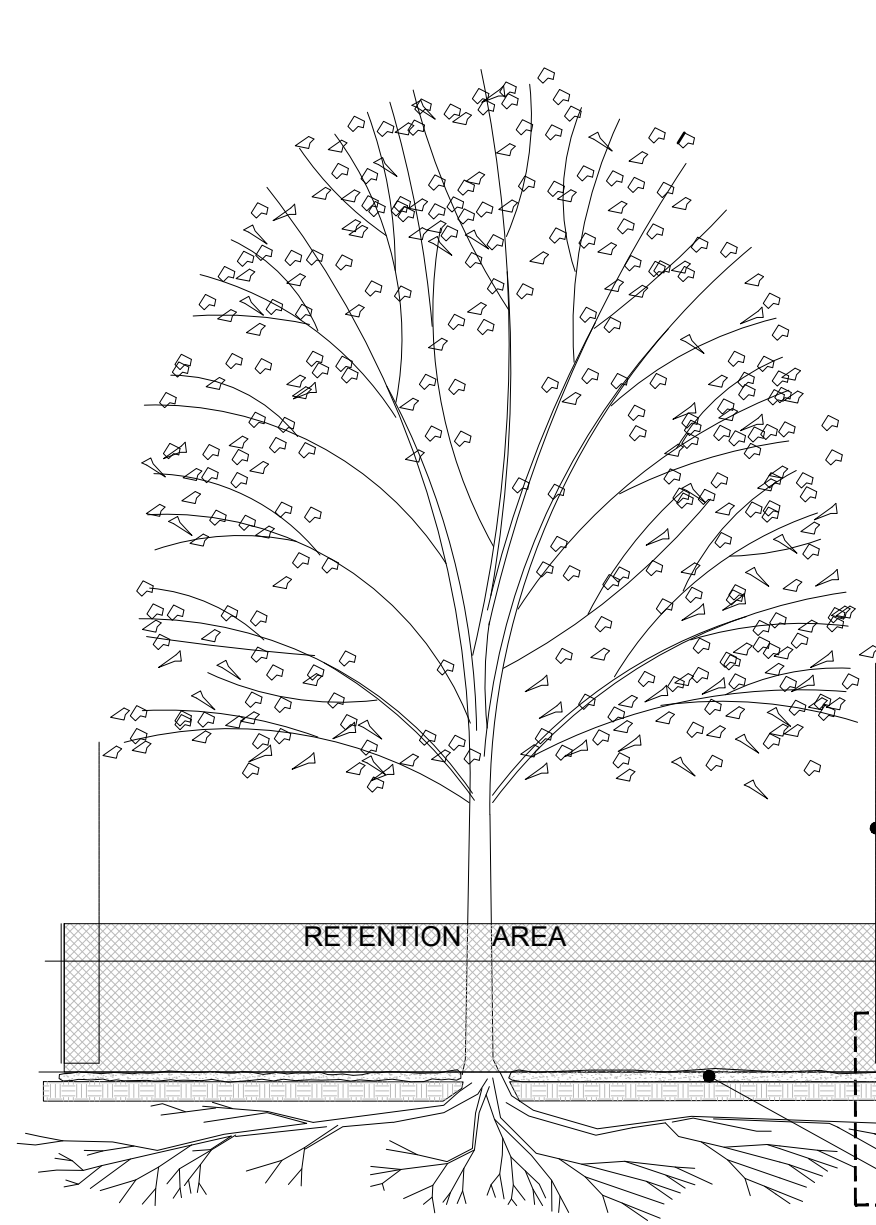
DETAIL A



6 TYPICAL TREE PROTECTIVE FENCE DETAIL

L2 NTS

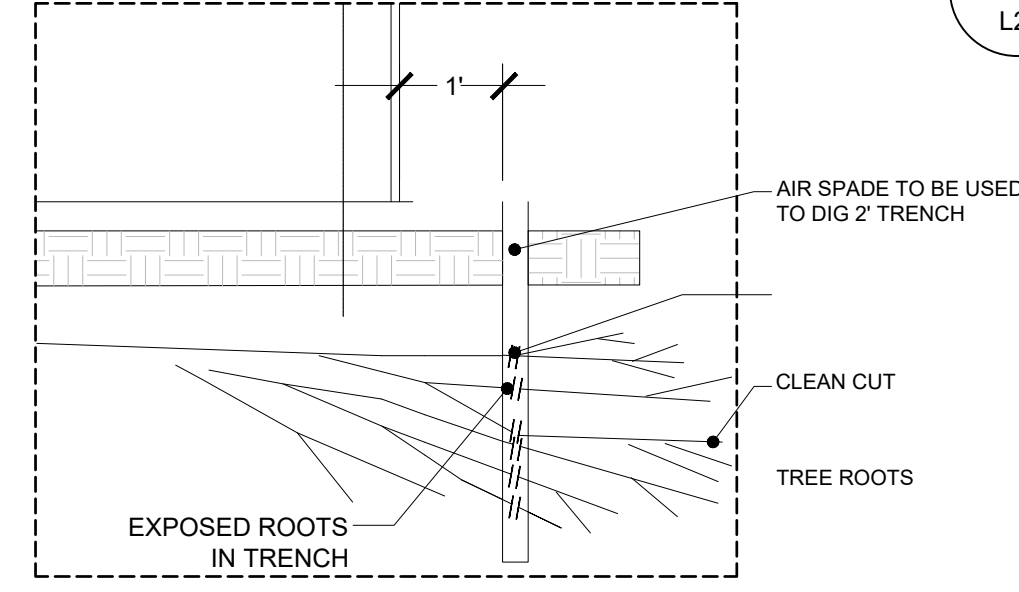
DETAIL A



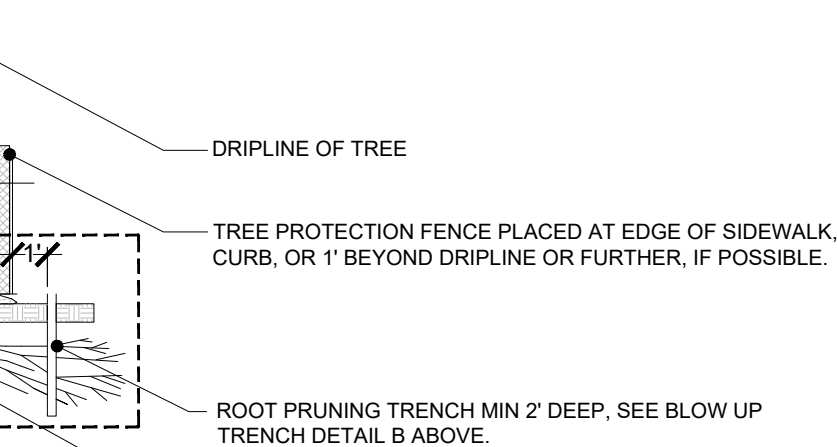
5 TREE PROTECTION DETAIL

L2 NTS

DETAIL B



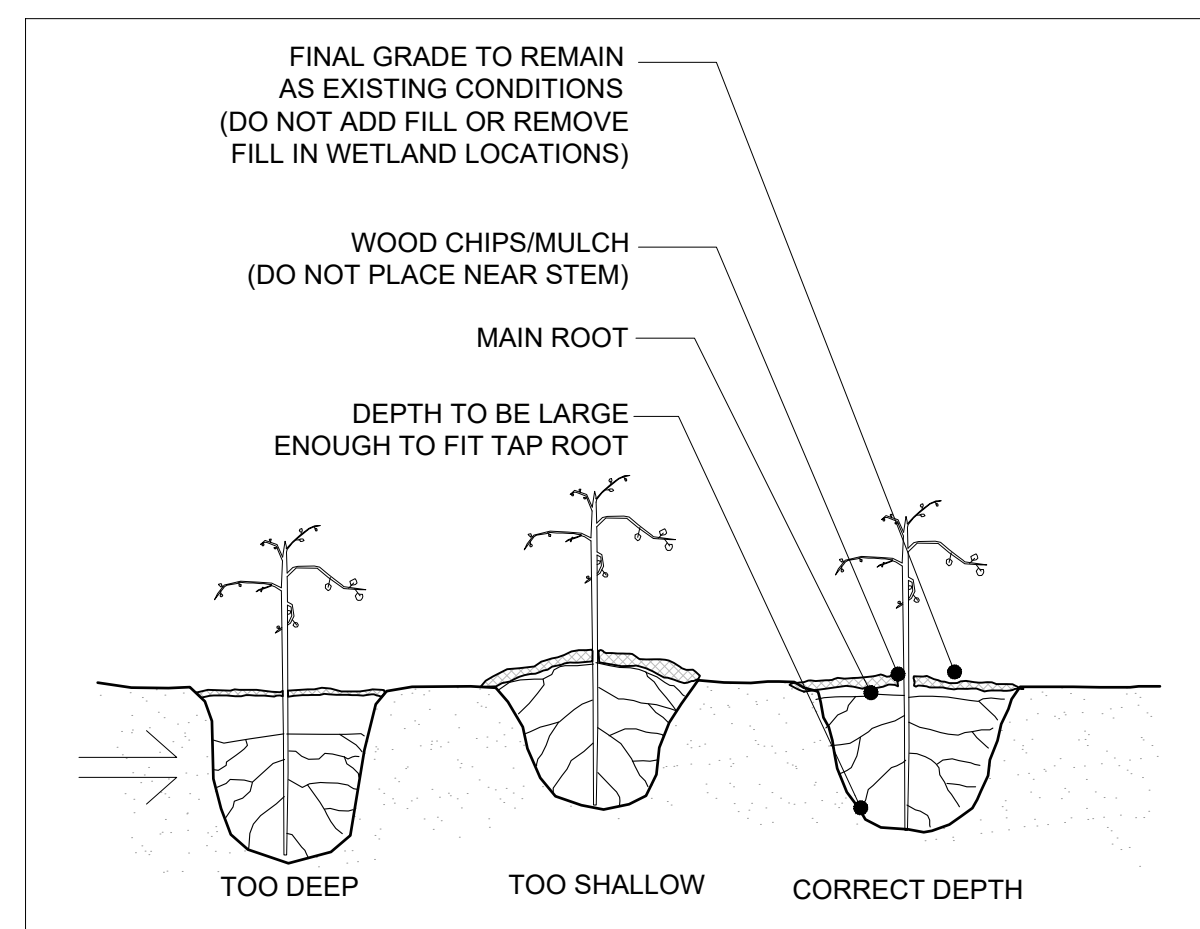
- ROOT PRUNING TRENCH NOTES:**
- USE AN AIR SPADE TO DIG THE 2" TRENCH AND EXPOSE THE ROOTS.
 - EXPOSED ROOTS SHOULD BE CUT WITH A SAW OR LOPPERS TO MAKE A CLEAN SMOOTH CUT, NOT TORN OR RIPPED.
 - MULCH EXPOSED ROOTS DURING THE CUTTING PROCESS TO KEEP FROM DRYING OUT.
 - BACKFILL TRENCH WITH MIXTURE OF TOPSOIL AND COMPOST.



1 TREE PLANTING DETAIL

L2 NTS

PLANTING DEPTH:



4 BARE ROOT PLANTING DETAIL

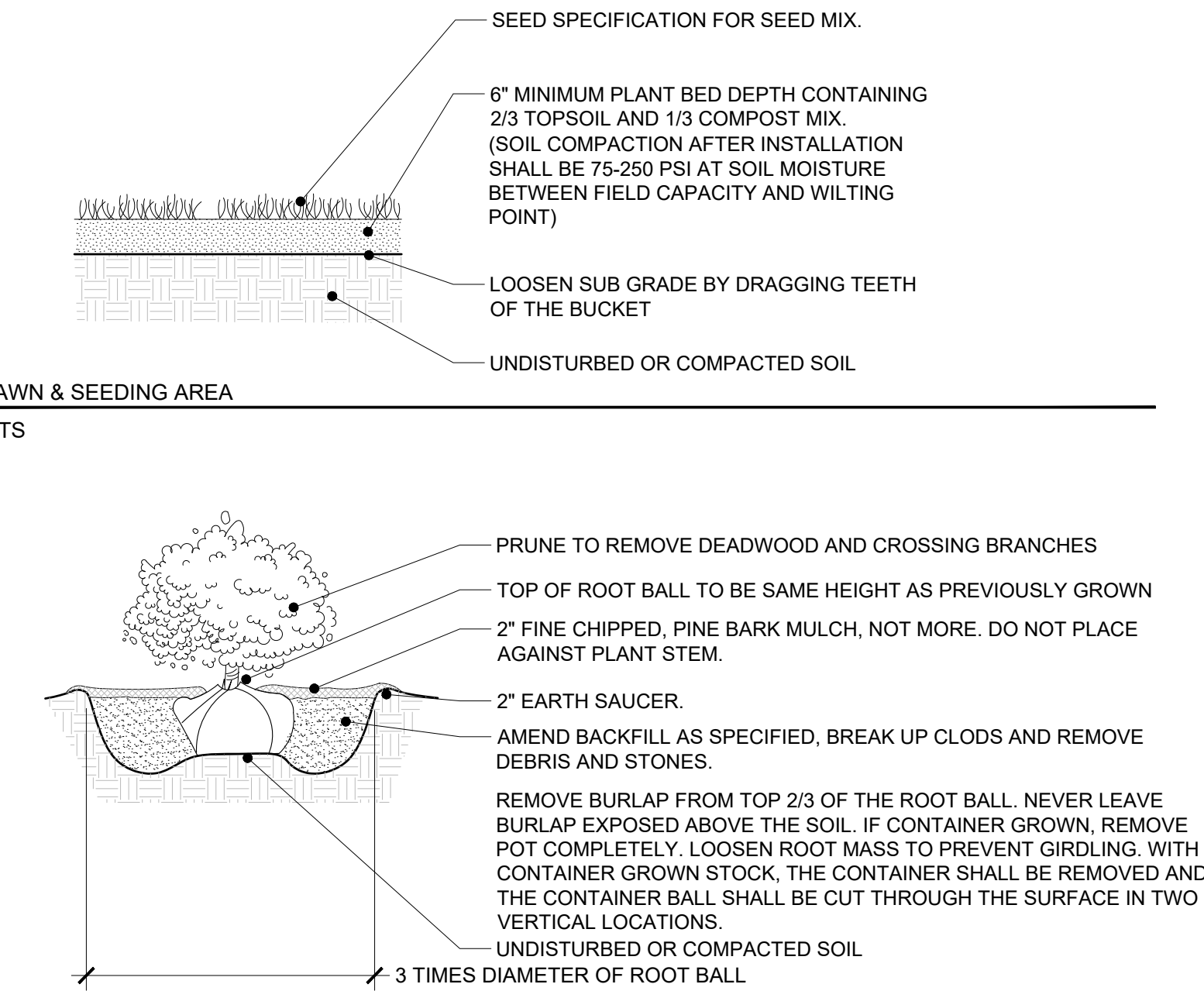
L2 NTS

3 LAWN & SEEDING AREA

L2 NTS

2 SHRUB PLANTING

L2 NTS



- PRUNE DAMAGED OR BROKEN BRANCHES
- USE WIDE BELT-TYPE TIES; DO NOT USE ROPE OR WIRE IN HOSE SLEEVES
- REUSABLE PERFORATED PLASTIC TREE WRAP (TO BE REMOVED ONE YEAR AFTER PLANTING). USE IF NECESSARY.
- 3 - 2" X 2" HARDWOOD STAKES 1/3 HEIGHT OF TREE OR MIN. OF 72" ALLOW FOR A DEPTH OF 12" BELOW UNDISTURBED GRADE. (STAKING TO BE REMOVED ONE YEAR AFTER PLANTING.)
- ROOT FLARE SHALL BE PLANTED AT R SLIGHTLY ABOVE FINAL GRADE (DUE TO NURSERY PRACTICES. THIS MAY REQUIRE REMOVING SOIL FROM THE TOP OF THE ROOT BALL TO LOCATE THE ROOT FLARE).
- 2-3" FINE CHIPPED BARK MULCH, NOT MORE. DO NOT PLACE MULCH DIRECTLY AGAINST TRUNK.
- 2" EARTH SAUCER.
- AMEND BACKFILL AS SPECIFIED, BREAK UP CLOUDS AND REMOVE DEBRIS AND STONES. ADD PLANT MIX CONTAINING 2/3 TOPSOIL AND 1/3 COMPOST MIX. MIX COMPOST IN THE TOP 6" FROM THE FINAL GRADE.
- SCARIFY SUB GRADE TO 4".
- CUT & REMOVE ALL OF THE WIRE BASKET, EXCEPT THAT WHICH IS UNDER THE ROOT BALL. LEAVE NO BURLAP EXPOSED ABOVE THE SOIL SURFACE. REMOVE BURLAP FROM THE TOP 2/3 OF ROOT BALL IF BURLAP IS MADE OF NATURAL FIBER. IF BURLAP IS PLASTIC OR TREATED, CUT AND REMOVE ALL BUT THAT WHICH IS UNDER THE ROOT BALL.

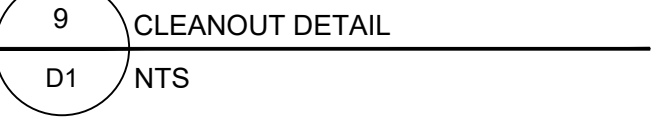
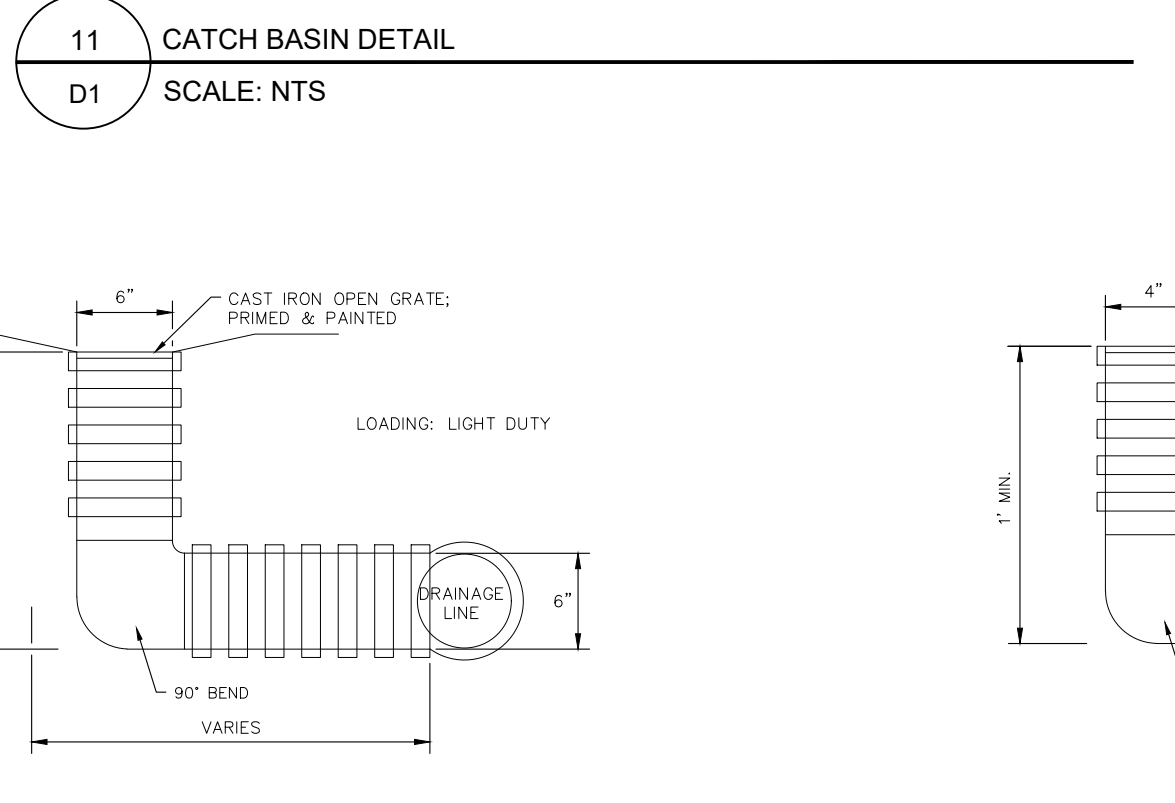
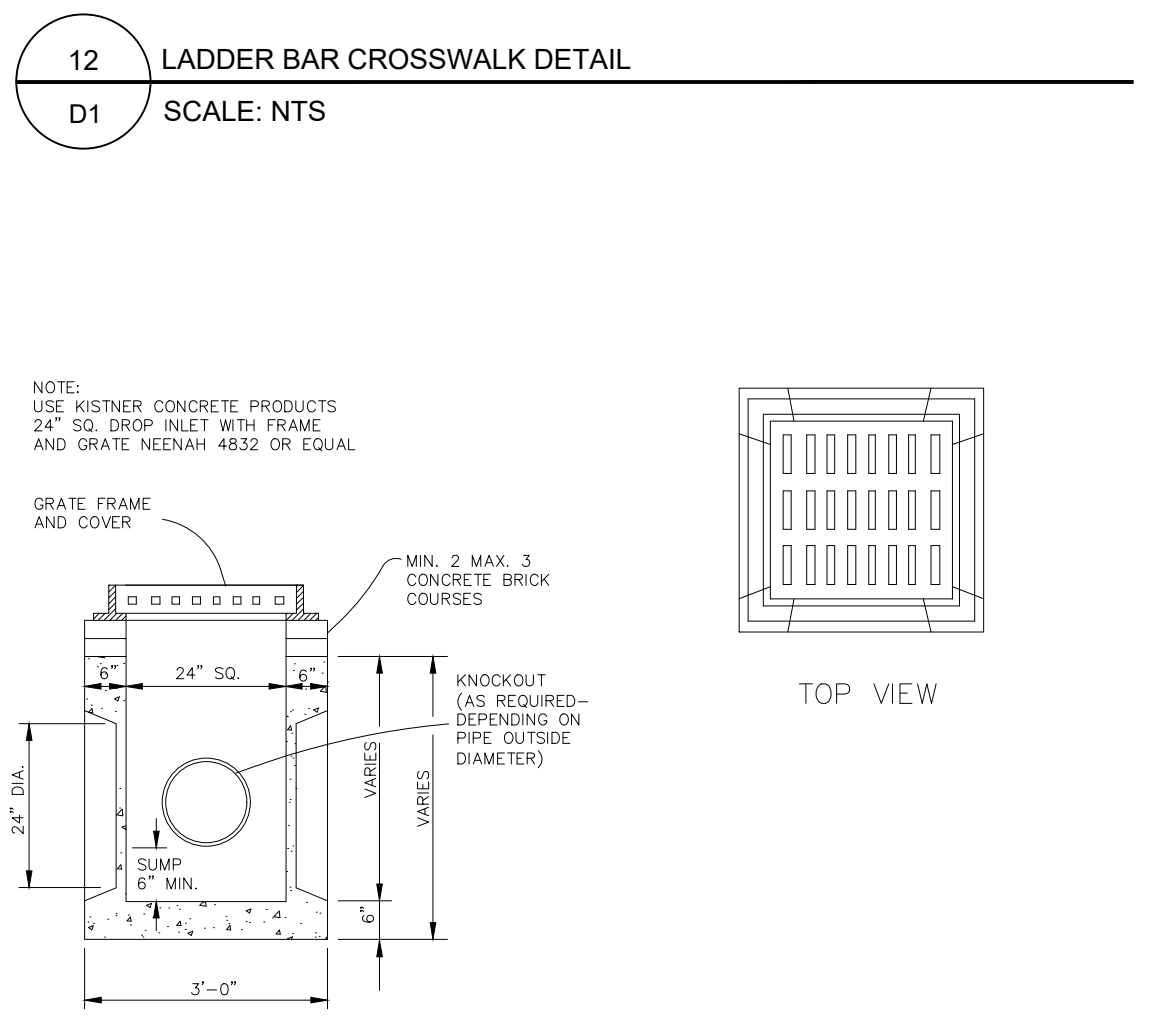
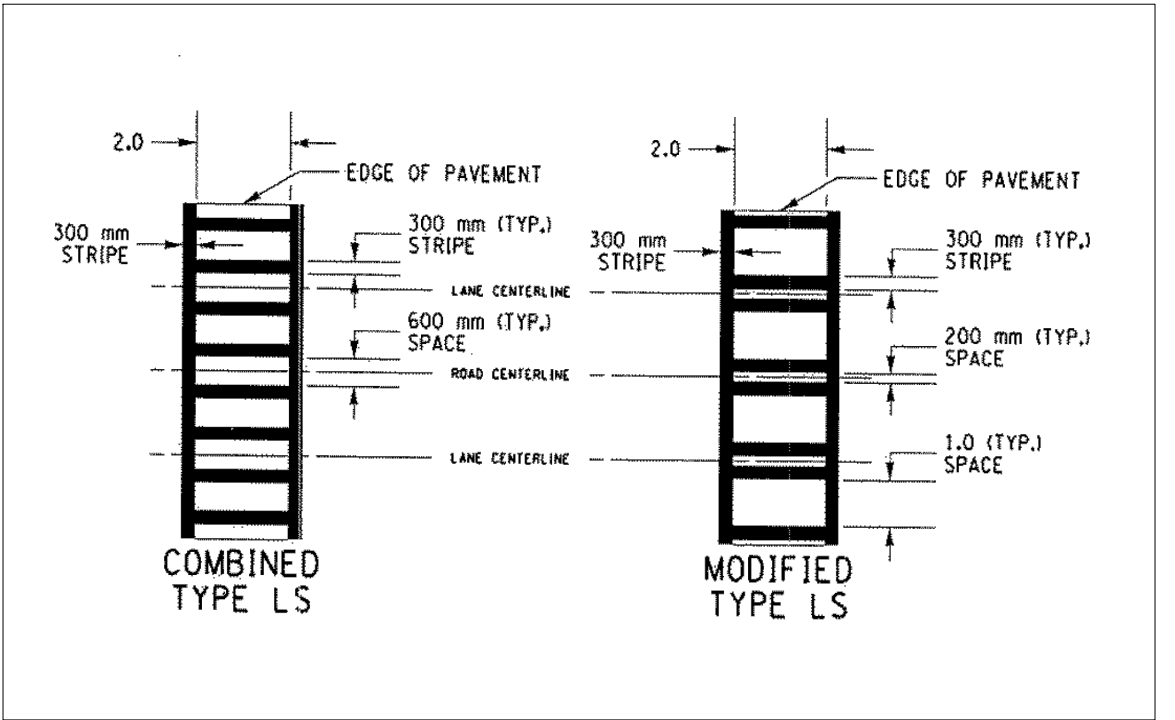
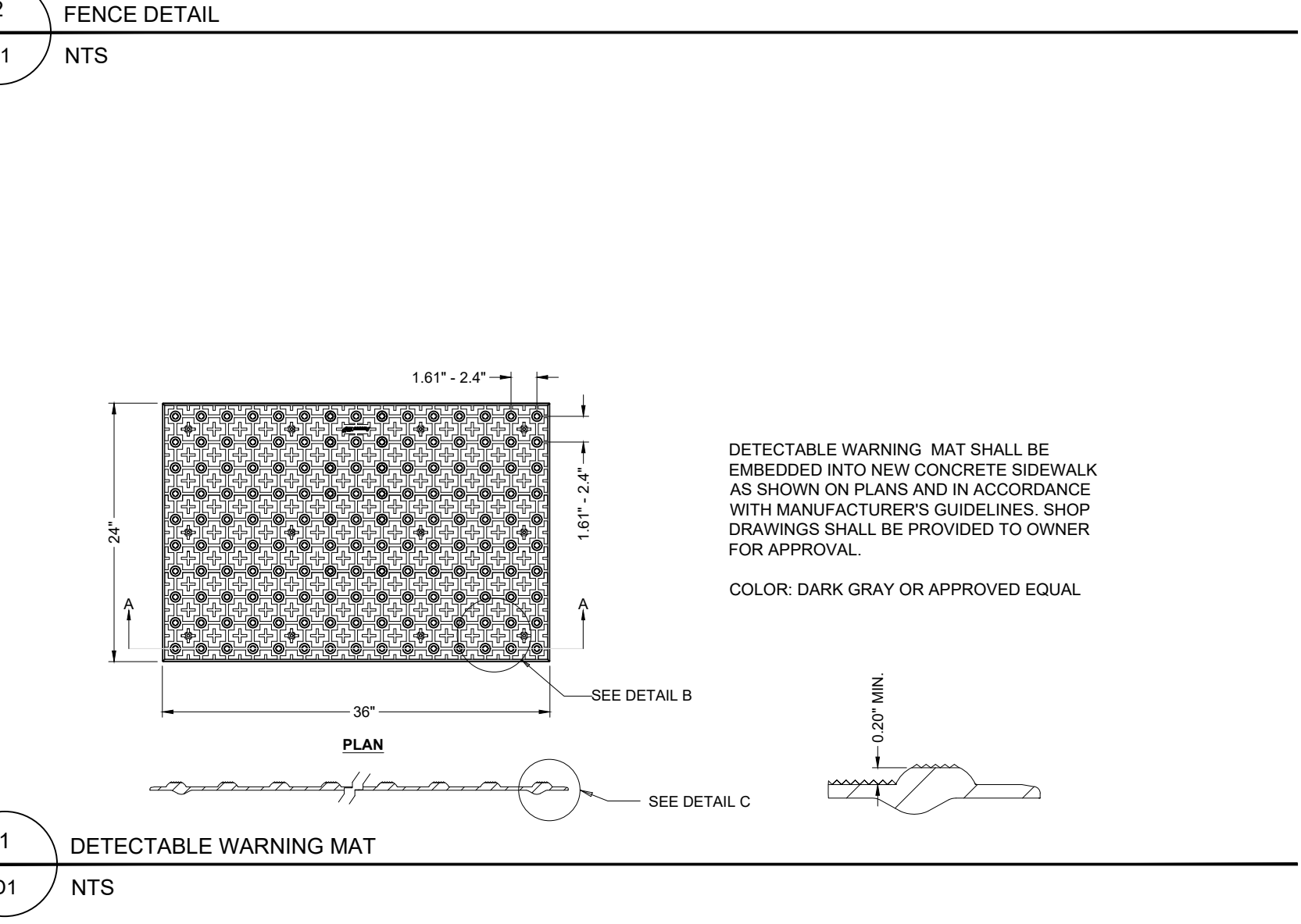
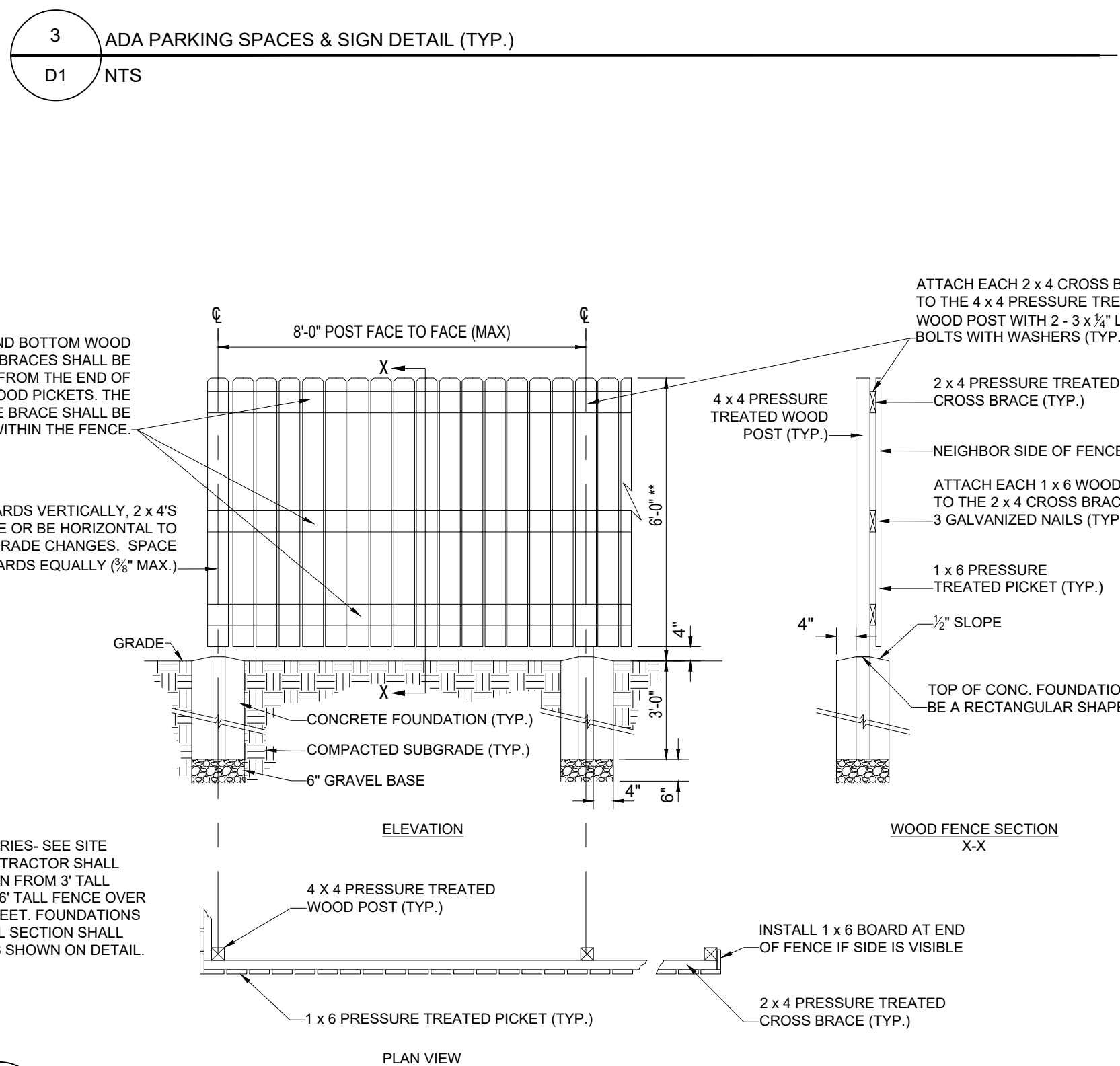
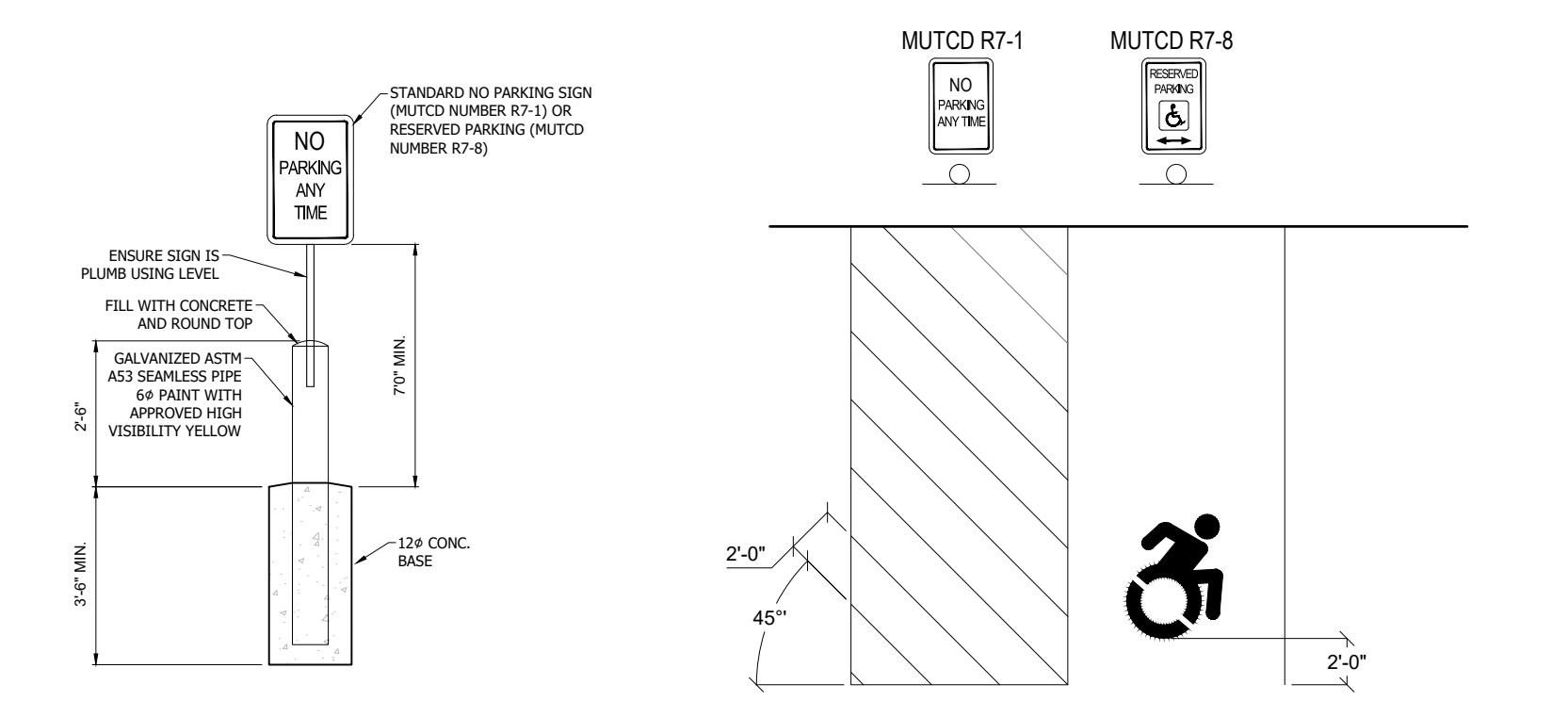
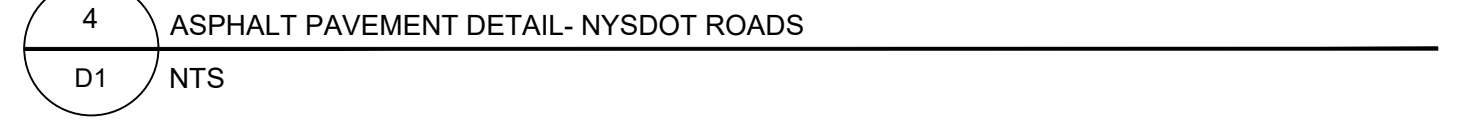
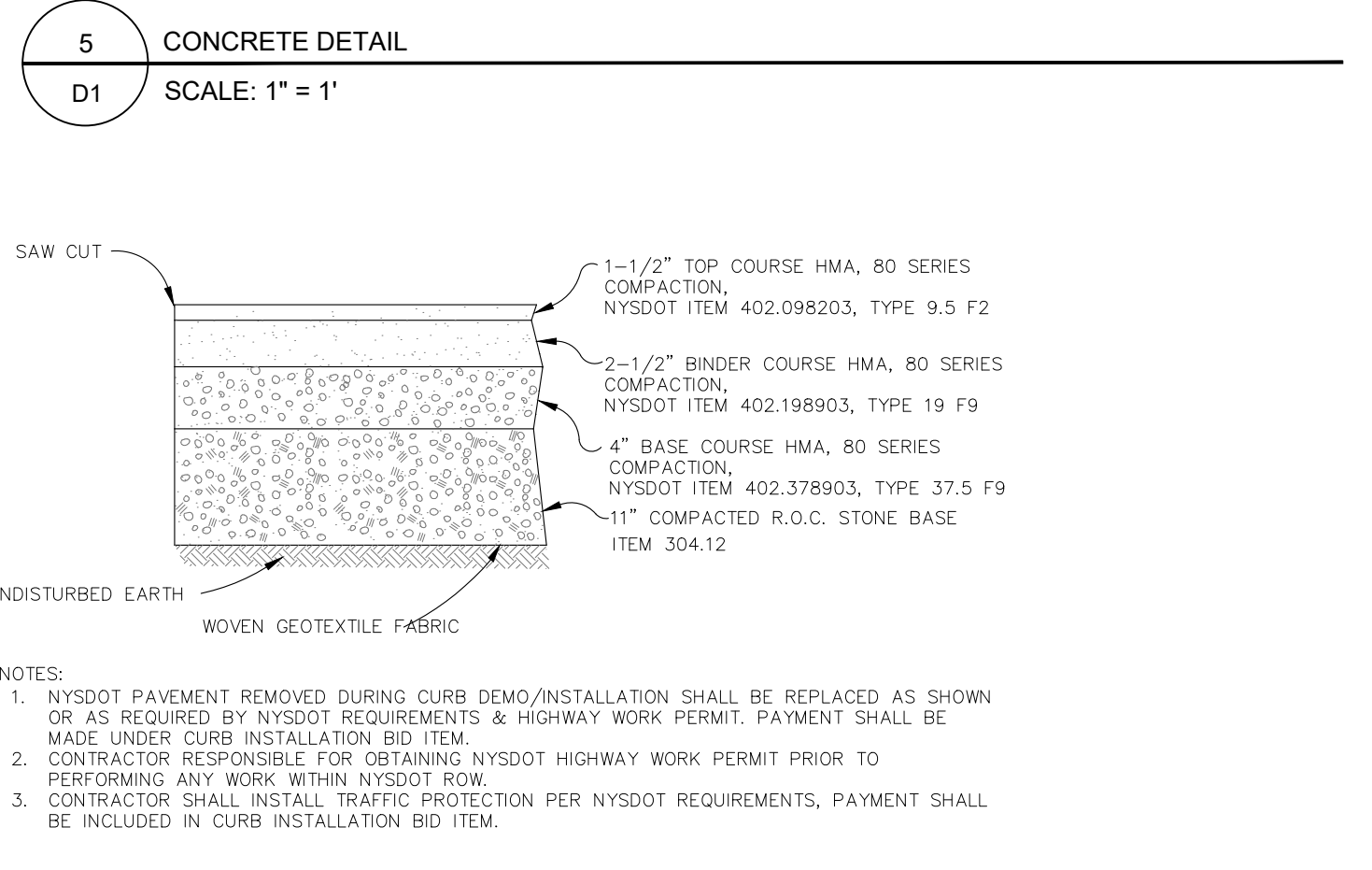
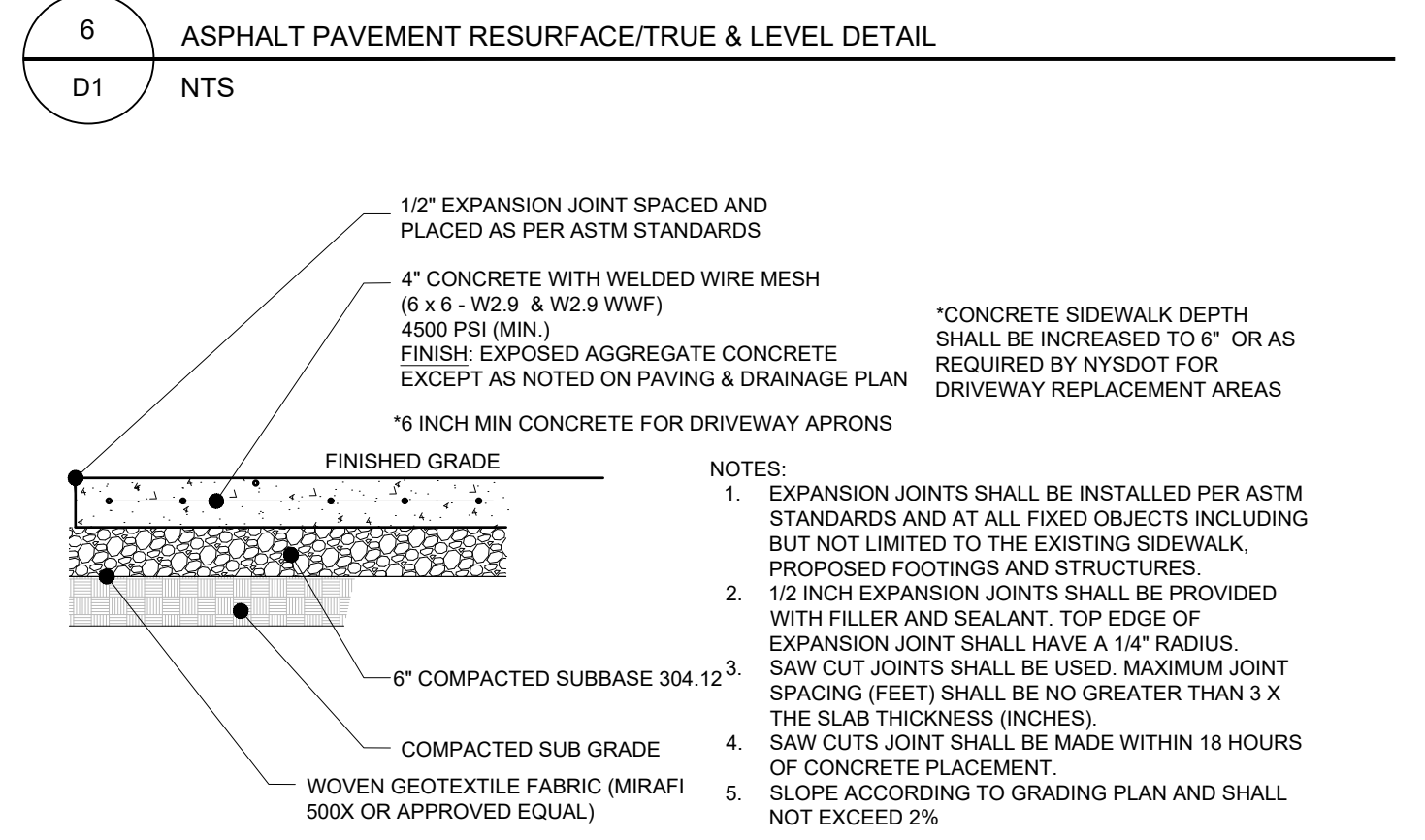
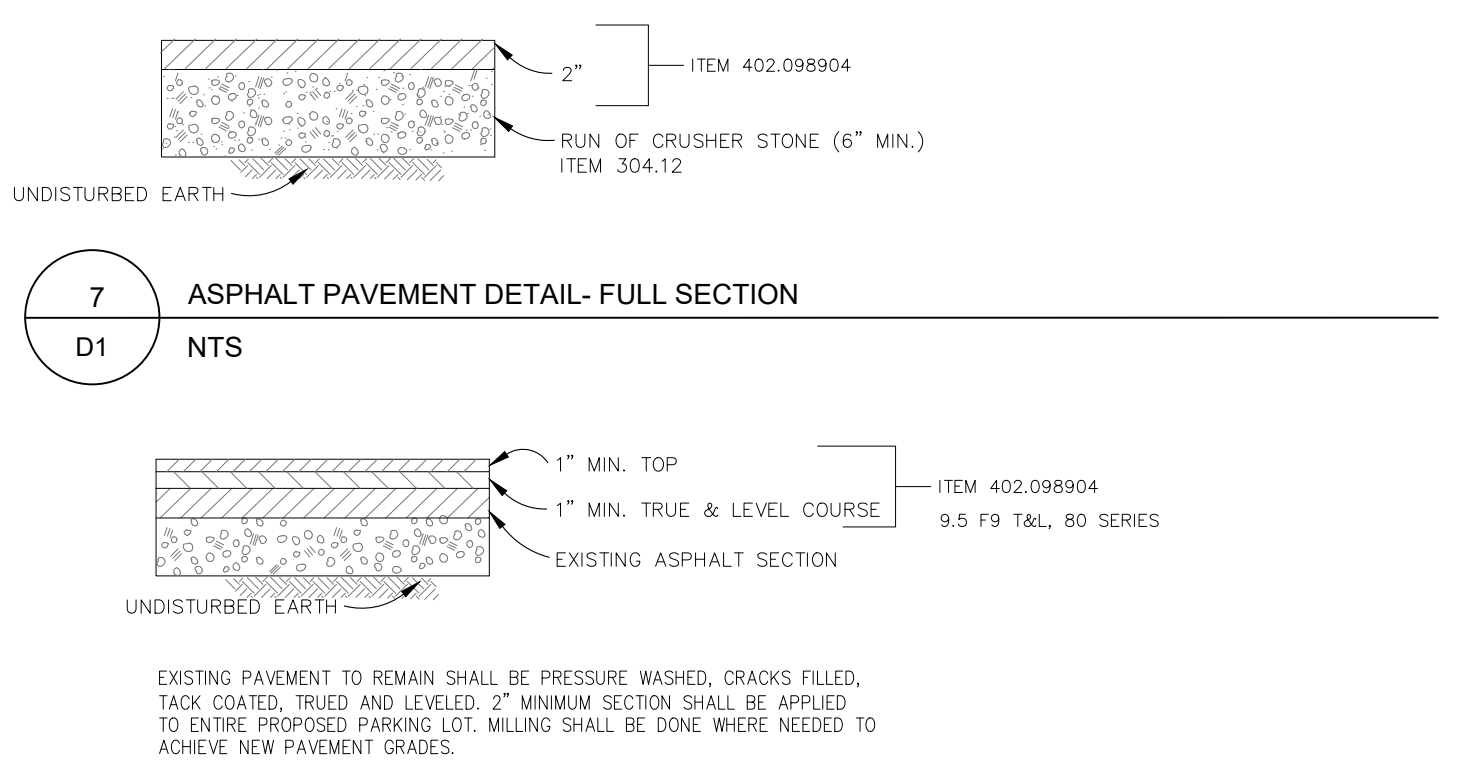
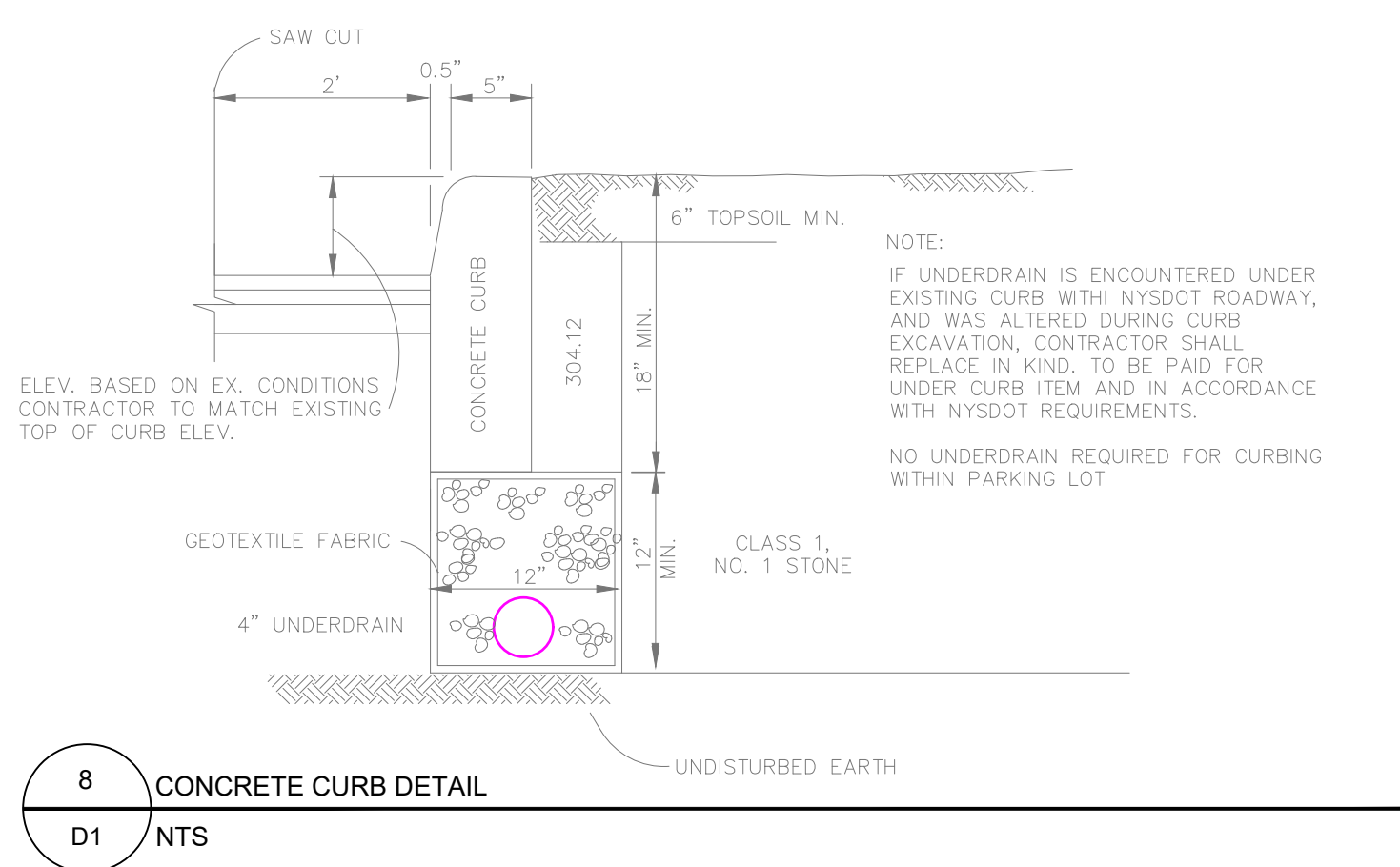


FIELD CREW:	
DRAWN BY:	
JOB NO.	
CHECKED BY:	
CHECKED BY:	
SCALE: NTS	
DATE:	
REVISIONS	
BY	DATE



FIELD CREW:
DRAWN BY:
JOB NO.
CHECKED BY:
CHECKED BY:
SCALE: NTS
DATE:

REVISIONS	
BY	DATE



C:\cadd\projects_CAD\Tupelo_Park\2025-04-02_Tupelo Park Major Site Plan_Response.dwg

TO BE DETERMINED

6
D2
PLAYGROUND SURFACE DETAIL (T.B.D.)
NTS



5
D2
PLAYGROUND EQUIPMENT DETAIL (T.B.D.)
NTS

- NYSDEC MONUMENT DETAIL:**
- MONUMENTS TO REPLICATE THE EXISTING MONUMENTS ON SITE.
 - 4" PIPE MIN. DIA.
 - FONT SHOULD BE VISIBLE ON TOP OF PIPE CAP
 - THE PIPES SHOULD BE VISIBLE
 - PIPES SHOULD BE FILLED WITH CONCRETE



4
D2
NYSDEC MONUMENT DETAILS
NTS

400 SERIES

MBE-0400-00004
Legacy # *MLB400B-PCC*

ITEM: BENCH 400 SERIES
MBE-0400-00004, MLB400B-PCC

MATERIAL: HIGH DENSITY PAPER COMPOSITE CHARCOAL SLATS

TYPE: BACKLESS, NO END ARMS

COLOR: GUN METAL, GLOSS

MOUNT: SURFACE MOUNT

MANUFACTURER: MAGLIN CORPORATION
BARBARA RITTER
TERRITORY MANAGER
TF 1 800 716 5506 x 6070 | F 877 260 9393
E barbara.ritter@maglin.com W www.maglin.com

MATERIALS: The frame is constructed of H.S steel. The seat employs high density paper composite - Charcoal color.

FINISH: All steel components are protected with E-Coat rust proofing. The Maglin Powdercoat System provides a durable finish on all metal surfaces.

INSTALLATION: The bench is delivered pre-assembled. Holes are provided in each foot for securing to base.

TO SPECIFY: Select MBE-0400-00004
Choose:
- Powdercoat Color

HEIGHT: 18.5" (47.0cm) LENGTH: 70" (177.8cm) DEPTH: 17.5" (44.5cm) WEIGHT: 109.17lbs (49.5kg)

MAGLIN
Site Furniture

T 800 716 5506
F 877 260 9393
www.maglin.com
sales@maglin.com

- All drawings, specifications, design and details on this page remain the property of Maglin Site Furniture Inc. and may not be used without Maglin authorization.
- Details and specifications may vary due to continuing improvements of our products.

3
D2
BENCH DETAIL
NTS

500 SERIES

MBR-0500-00003
Legacy # *MBR500-S*

ITEM: BIKE RACK, MBR0500-0003

COLOR: GUN METAL, GLOSS

MOUNT: SURFACE MOUNT

MANUFACTURER: MAGLIN CORPORATION
BARBARA RITTER
TERRITORY MANAGER
TF 1 800 716 5506 x 6070 | F 877 260 9393
E barbara.ritter@maglin.com W www.maglin.com

MATERIALS: All parts of the bike rack are made from H.S. steel tube.

FINISH: All steel components are protected with E-Coat rust proofing. The Maglin Powdercoat System provides a durable finish on all metal surfaces.

INSTALLATION: The bike rack is delivered pre-assembled. It is available with either a surface mount or direct burial installation option.

TO SPECIFY: Select MBR-0500-00003
Choose:
- Powdercoat Color

HEIGHT: 35" (88.9cm) LENGTH: 19.25" (48.9cm) WEIGHT: 13.27 lbs (6.0kg)

MAGLIN
Site Furniture

T 800 716 5506
F 877 260 9393
www.maglin.com
sales@maglin.com

- All drawings, specifications, design and details on this page remain the property of Maglin Site Furniture Inc. and may not be used without Maglin authorization.
- Details and specifications may vary due to continuing improvements of our products.

2
D2
BIKE RACK DETAIL
NTS

1
D2
SURFACE MOUNTED BENCH CONNECTION DETAIL
NTS

GALVANIZED NUT SECURE WITH THREAD GLUE

FOOT OF BENCH

GALVANIZED BOLT SIZED PER MANUFACTURERS SPECIFICATIONS

EPOXIED PLUG IN HOLE

DRILLED HOLE IN CONCRETE CONCRETE SURFACE

ENLARGMENT OF CONNECTION

BENCH AS SPECIFIED

CONCRETE FINISH GRADE

EPOXY BOLT IN HOLE

BENCH TO BE MOUNTED TO CONCRETE

NOTE: BENCH SHALL BE SHIMMED AS NECESSARY TO ENSURE LEVEL INSTALLATION

TOWN OF AMHERST
TOWN FACILITY/PARK
5583 MAIN STREET
WILLAMSVILLE, NY 14221
PHONE: (716) 631-7051



EVERGREEN PARK (75 TUPELO LANE)

PARK DETAILS

FIELD CREW:
DRAWN BY:
JOB NO.
CHECKED BY:
CHECKED BY:

SCALE: NTS

DATE:

REVISIONS	
BY	DATE

DWG. NO.

D2

SHT. NO. 9 OF 10

PROJECT NOTES AND ADDITIONAL REQUIREMENTS:

GENERAL

1. WARNING: IT IS A VIOLATION OF THE NEW YORK STATE EDUCATION LAW FOR ANY PERSON, UNLESS ACTING UNDER THE DIRECTION OF A LICENSED PROFESSIONAL ENGINEER, TO ALTER AN ITEM ON THESE PLANS IN ANY WAY. IF ALTERATIONS TO THESE PLANS ARE REQUIRED, THE ALTERATIONS SHALL BE MADE IN ACCORDANCE WITH ARTICLE 145-SUBSECTION 7209 OF THE NEW YORK STATE EDUCATION LAW. – THE EXISTING UNDERGROUND UTILITIES WERE PLOTTED
2. ADDITIONAL COSTS: UNIT BID PRICES SHALL INCLUDE ANY ADDITIONAL COSTS INCURRED TO MEET ANY FEDERAL, STATE OR LOCAL REGULATIONS.
3. STAKEOUT: THE CONTRACTOR SHALL NOTIFY 'DIG SAFELY NEW YORK' (1-800-962-7962) FOR A UTILITY STAKEOUT 48 HOURS IN ADVANCE OF COMMENCING WORK. STAKEOUT OF PRIVATE UTILITIES SHALL BE COORDINATED WITH THE PROPERTY AND UTILITY OWNERS.
4. MAINTENANCE: PUBLIC STREETS, PRIVATE DRIVES AND PARKING FACILITIES SHALL BE KEPT FREE OF FOREIGN MATERIALS. ALL AREAS SHALL BE SWEEP CLEAN AT THE END OF EACH WORKING DAY AND/OR AS DIRECTED BY THE ENGINEER. WATER CANNOT BE TAKEN FROM FIRE HYDRANTS WITHOUT APPROVAL FROM ERIE COUNTY WATER AUTHORITY.
5. CONSTRUCTION STORAGE: STORAGE OF EQUIPMENT AND MATERIALS SHALL BE THE RESPONSIBILITY OF THE CONTRACTOR WITH THE APPROVAL OF THE ENGINEER.
6. PERMIT(S): OTHER THAN THE PERMITS INCLUDED IN THE CONTRACT DOCUMENTS, ANY ADDITIONAL PERMITS SHALL BE THE RESPONSIBILITY OF THE CONTRACTOR, INCLUDING THE COSTS ASSOCIATED WITH THE PERMITS.
7. NYS DOT SPECIFICATIONS: ALL NEW YORK STATE DEPARTMENT OF TRANSPORTATION SPECIFICATIONS REFERRED TO HEREIN APPLY TO THE EDITION DATED JANUARY 1, 2022 INCLUDING THE LATEST REVISIONS.
8. CONTRACTOR VEHICLES: VEHICLES BELONGING TO THE CONTRACTOR OR THEIR WORKMEN SHALL NOT BE PARKED ON THE PAVEMENT OR SHOULDERS ALONG A ROADWAY WHERE PARKING IS NOT PERMITTED. ADDITIONALLY, THE CONTRACTOR SHALL NOT PARK THEIR EQUIPMENT OVERNIGHT OR STORE MATERIAL WHERE IT IS DEEMED BY THE ENGINEER TO BE A SAFETY HAZARD TO TRAFFIC.
9. NOISE: NO WORK SHALL BE CONDUCTED BEFORE 7 A.M. OR AFTER 6 P.M. EXCEPT IN THE CASE OF AN EMERGENCY OR WITH PRIOR APPROVAL OF THE TOWN OF AMHERST.
10. WORK LIMITS: ALL WORK SHALL BE LIMITED TO WITHIN THE RIGHTS OF WAY, EASEMENTS, OR LIMITS OF RELEASE.
11. DEWATERING: DEWATERING TRENCHES SHALL BE CONSIDERED AS PART OF OTHER BID ITEMS AS APPLICABLE. NO ADDITIONAL PAYMENT SHALL BE MADE.
12. RECONSTRUCTION NOTES: THE CONTRACTOR'S ATTENTION IS DIRECTED TO THE FACT THAT, DUE TO THE NATURE OF RECONSTRUCTION PROJECTS, THE EXACT EXTENT OF RECONSTRUCTION WORK CANNOT ALWAYS BE ACCURATELY DETERMINED PRIOR TO THE COMMENCEMENT OF WORK. THESE CONTRACT DOCUMENTS HAVE BEEN PREPARED BASED ON FIELD SURVEY AND RECORD PLANS. FIELD CONDITIONS MAY REQUIRE MODIFICATIONS TO CONSTRUCTION DETAILS AND WORK QUANTITIES. THE CONTRACTOR SHALL PERFORM THE WORK IN ACCORDANCE WITH FIELD CONDITIONS.
13. PROPERTY PROTECTION: THE CONTRACTOR IS RESPONSIBLE FOR DAMAGE TO FEATURES TO REMAIN SUCH AS EXISTING PAVEMENT, CURBS, WALKS, LAWNS, TREES, ETC. THAT IS CAUSED BY THEIR CONSTRUCTION OPERATIONS. ALL DAMAGE SHALL BE REPAIRED OR REPLACED BY THE CONTRACTOR, AS DIRECTED BY THE ENGINEER, AT NO EXPENSE TO THE OWNER.
14. SITE SAFETY: PRIOR TO AND THROUGHOUT CONSTRUCTION, THE CONTRACTOR SHALL POST SIGNAGE IN CONFORMANCE WITH THE REQUIREMENTS OF THE TOWN OF AMHERST AND OCCUPATIONAL SAFETY AND HEALTH ADMINISTRATION (OSHA). JOB SAFETY AND MAINTENANCE AND PROTECTION OF TRAFFIC IS THE RESPONSIBILITY OF THE CONTRACTOR. THE CONTRACTOR SHALL MAINTAIN ALL FENCING AND BARRICADES THROUGHOUT THE DURATION OF CONSTRUCTION. THE PROJECT SITE FENCING SHALL BE SECURE DURING OFF-WORK HOURS TO HELP ENSURE PUBLIC SAFETY.
15. EROSION & SEDIMENT CONTROL MEASURES SHALL BE INSTALLED IN ACCORDANCE WITH NYSDEC REQUIREMENTS & PAID FOR EROSION & SEDIMENT CONTROL BID ITEM. THIS INCLUDES BUT NOT LIMITED TO CONSTRUCTION ENTRANCES, SILT FENCE/SOCK INLET PROTECTION, DUST CONTROL, TEMPORARY STABILIZATION, TEMPORARY CHECK DAMS, AND ROADWAY/SITE SWEEPING/CLEANING.

MAINTENANCE AND PROTECTION OF TRAFFIC

1. ACCESS: THE CONTRACTOR IS RESPONSIBLE FOR MAINTAINING ACCESS TO PRIVATE AND COMMERCIAL DRIVEWAYS WITHIN THE PROJECT LIMITS DURING THE LIFE OF THE PROJECT. TEMPORARY DRIVEWAYS SHALL BE PROVIDED AS NECESSARY. IF POSSIBLE, COMMERCIAL DRIVEWAYS SHALL BE MAINTAINED USING ALTERNATE ACCESS DURING ACTIVITIES THAT CAUSE DISRUPTION TO THE EXISTING DRIVEWAY DURING CONSTRUCTION OF THE NEW FACILITY. THE CONTRACTOR SHALL ALLOW FOR DELIVERIES AT ALL TIMES DURING CONSTRUCTION. THE CONTRACTOR SHALL NOTIFY THE OWNERS OF THE DRIVEWAYS 24 HOURS PRIOR TO COMMENCING ANY WORK ACTIVITY THAT MAY DISRUPT ACCESS. THE CONTRACTOR SHALL PROVIDE AND MAINTAIN VEHICULAR ACCESS TO ALL ADJOINING PROPERTIES, PRIVATE ROADWAYS, PARKING FACILITIES, AND PUBLIC STREETS DURING CONSTRUCTION TO THE SATISFACTION OF THE ENGINEER.
2. OPEN TRENCHES: OPEN TRENCHES LEFT OPEN OVERNIGHT SHALL BE APPROPRIATELY COVERED. PAYMENT WILL BE MADE UNDER STORM OR ELECTRICAL BID ITEMS AS APPROPRIATE. NO ADDITIONAL PAYMENT WILL BE MADE.

WORK ZONE TRAFFIC CONTROL

1. MAINTENANCE & PROTECTION OF TRAFFIC: THE CONTRACTOR SHALL MAINTAIN TRAFFIC IN ACCORDANCE WITH NYS DOT REQUIREMENTS AND PERTINENT PROVISIONS OF THE MANUAL OF UNIFORM TRAFFIC CONTROL DEVICES (MUTCD 2009 EDITION). THE CONTRACTOR'S ATTENTION IS DIRECTED TO THE REQUIREMENTS OF SECTION 107, LEGAL RELATIONS AND RESPONSIBILITY TO THE PUBLIC OF THE STANDARD SPECIFICATIONS DATED JANUARY 1, 2022 INCLUDING CURRENT ADDITIONS AND MODIFICATIONS.
2. MAINTENANCE & PROTECTION OF TRAFFIC SHALL BE PAID FOR UNDER ASSOCIATED BID ITEM AS DESCRIBED IN THE SPECS. TRAFFIC CONTROL REQUIRED FOR CURB DEMO & INSTALLATION SHALL BE PAID FOR UNDER CURB INSTALL BID ITEM. ANY TRAFFIC CONTROL REQUIRED FOR STORM, ELECTRICAL, CONCRETE WORK ECT. SHALL BE PAID FOR UNDER STORM, ELECTRICAL, CONCRETE BID ITEMS RESPECTIVELY. TYPICAL.
3. HOURS AND DURATION OF LANE CLOSURES SHALL BE DONE IN ACCORDANCE WITH NYS DOT REQUIREMENTS AND HIGHWAY WORK PERMITS.

BICYCLES AND PEDESTRIANS

1. THE CONTRACTOR SHALL PROVIDE, DELINEATE, AND MAINTAIN A USABLE TRAVEL PATH FOR PEDESTRIANS AND BICYCLISTS EITHER THROUGH OR AROUND WORK ZONES FOR THE DURATION OF THIS PROJECT. THE TRAVEL PATH SHALL COMPLY WITH THE PROVISIONS OF THE ADA GUIDLINES AND NYS HIGHWAY LAW, SECTION 316, THE CONTRACTOR MAY UTILIZE AND COMBINATION OF THE FOLLOWING TO PROVIDE THE USABLE TRAVEL PATH: EXISTING SIDEWALKS/SHOULDERS; TEMPORARY SIDEWALKS/SHOULDERS; FINAL SIDEWALKS/SHOULDERS; AND EXISTING OR TEMPORARY SIDEWALK CURB RAMPS. THE USABLE TRAVEL PATH SHALL BE CLEARLY MARKED AND STAGED BETWEEN INTERSECTING ROADS TO ENSURE SAFE PEDESTRIAN CROSSING AND ACCESSIBILITY. PEDESTRIAN ACCESS TO RESIDENTIAL AND COMMERCIAL PROPERTIES SHALL BE MAINTAINED FOR THE DURATION OF CONSTRUCTION. PAYMENT SHALL BE MADE UNDER SITE PREP, DEMO, AND EXCAVATION ITEM.

UTILITY NOTES

1. UTILITIES OR UTILITY MAPPING: THE EXISTING UNDERGROUND UTILITIES WERE PLOTTED BASE ON RECORD MAPPING SUPPLIED BY OTHERS AND BY FIELD SURVEY. THE TOWN MAKES NO WARRANTY AS TO THE LOCATION, SIZE, TYPE, ELEVATION, AND/OR NUMBER OF EXISTING UTILITIES. THE CONTRACTOR SHALL BE RESPONSIBLE FOR DETERMINING THE HORIZONTAL AND VERTICAL LOCATION OF UTILITIES AND WHERE ANY POTENTIAL CONFLICTS MAY APPEAR.
2. EXISTING UTILITIES: THE CONTRACTOR IS ADVISED THAT EXISTING UTILITIES MAY INTERFERE WITH CONSTRUCTION WHERE EXISTING UTILITIES ARE REQUIRED TO BE SUPPORTED, BRACED, OR RELOCATED, THE CONTRACTOR SHALL MAKE THE NECESSARY ARRANGEMENTS WITH THE AFFECTED UTILITY COMPANY REGARDING SUCH SUPPORT, BRACING, OR RELOCATION.

THE CONTRACTOR SHALL MAINTAIN SERVICE OF ALL EXISTING UTILITIES DURING CONSTRUCTION. THE CONTRACTOR SHALL BE FULLY RESPONSIBLE FOR ANY DISRUPTION OF UTILITY SERVICE. DAMAGE TO EXISTING SITE FEATURES, INCLUDING UTILITY APPURTENANCES RESULTING FROM THE CONTRACTOR'S EXECUTION OF THE WORK SHALL BE RESTORED BY THE CONTRACTOR TO THE OWNER'S SATISFACTION OR A.O.B.E. AT NO ADDITIONAL COST TO THE TOWN. IN THE EVENT THE CONTRACTOR DAMAGES AN EXISTING UTILITY SERVICE, CAUSING AN INTERRUPTION IN SAID SERVICE, THEY SHALL IMMEDIATELY COMMENCE WORK TO RESTORE SERVICE, AND MAY NOT CEASE SUCH WORK OPERATION UNTIL SERVICE IS RESTORED.

THE CONTRACTOR SHALL CALL DIG SAFE PRIOR TO CONSTRUCTION.

CONSTRUCTION

1. STAKEOUT: THE CONSTRUCTION STAKEOUT SHALL BE PERFORMED BY A LICENSED LAND SURVEYOR. AN AUTOCAD FILE WILL BE PROVIDED TO THE SURVEYOR.
2. STAGING: THE CONTRACTOR SHALL PROVIDE A SECURE STAGING AREA FOR STORAGE OF EQUIPMENT, MATERIALS, EMPLOYEE PARKING AND OFFICE SPACE.
3. CLOSE-OUT: PROJECT CLOSE-OUT INCLUDES BUT IS NOT LIMITED TO THE FOLLOWING:
 - REMOVAL OF ANY CONSTRUCTION DEBRIS.
 - CLEANING PAVEMENT AND WALKWAY SURFACES.
 - RESTORATION OF ALL DISTURBED GRASS AND LANDSCAPED AREAS.
 - PROVIDING BONDS, GUARANTEES, CERTIFICATIONS, AS REQUIRED BY CONTRACT DOCUMENTS.
 - COMPLETION OF FINAL PUNCH LIST ITEMS.
4. IF THE EXCAVATION SLOPE IS STEEPER THAN 1 ON 1 AS MEASURED FROM THE EDGE OF PAVEMENT ELEVATION TO THE BOTTOM ELEVATION OF THE EXCAVATION, AN ENGINEERING SHORING SUPPORT SYSTEM SHALL BE PROVIDED TO ENSURE THE STABILITY OF THE ADJACENT PAVEMENT WILL NOT BE COMPROMISED BY THE EXCAVATION.
5. IF AN EXCAVATION WILL BE 4 FEET OR MORE IN DEPTH, A PROTECTION SYSTEM SUCH AS A TRENCH SHIELD SHALL BE USED IN ACCORDANCE WITH STATE REQUIREMENTS AND PAID FOR AND INCLUDED WITHIN ASSOCIATED BID ITEMS.
6. IN EXCAVATIONS 4 FEET OR MORE IN DEPTH, ALL NECESSARY PRECAUTIONS SHALL BE TAKEN FOR THE POTENTIAL ACCUMULATION OF HAZARDOUS GASES.
7. SELECT FILL IS REQUIRED FULL LENGTH OF STORM SEWER TRENCH IN PAVEMENT AREAS.

SITE DEMO, REMOVAL, & EXCAVATION

1. EXCAVATIONS: ALL EXCAVATIONS SHALL BE BACKFILLED/BARRICADED TO THE SATISFACTION OF THE ENGINEER AT THE CONCLUSION OF EACH WORK DAY.
2. ARTIFACTS: SHOULD ANY REMAINS OR ARTIFACTS BE ENCOUNTERED IN THE COURSE OF PERFORMING THE WORK, ALL ACTIVITY AT THE SPECIFIC LOCATION WILL CEASE AND THE ENGINEER WILL IMMEDIATELY BE NOTIFIED OF THE FIND. AFTER THE APPROPRIATE ACTIONS HAVE BEEN TAKEN, THE CONTRACTOR WILL BE NOTIFIED THAT THE WORK MAY RESUME.

ADDITIONAL NOTES:

1. CONTRACTOR SHALL COORDINATE WITH NYS DOT AND OBTAIN NECESSARY HIGHWAY WORK PERMITS PRIOR TO STARTING CONSTRUCTION.
2. ANY LANE CLOSURES OR TRAFFIC CONTROL MEASURES SHALL BE DONE IN ACCORDANCE WITH NYS DOT REQUIREMENTS.
3. SIDEWALKS SHALL REMAIN SAFE AND PROTECTED FROM CONSTRUCTION. ANY MEASURES IMPLEMENTED TO KEEP SIDEWALKS SAFE FOR PEDESTRIAN USE (INCLUDING TEMPORARY FENCING) SHALL BE INCLUDED WITHIN SITE PREP, DEMO AND EARTHWORK BID ITEM.
4. SIDEWALK CLOSURES SHALL BE APPROVED BY OWNER AND NYS DOT. CONTRACTOR SHALL NOTIFY NFTA IF A BUS STOP IS REQUIRED TO BE RELOCATED. SEE ALSO "BICYCLE AND PEDESTRIAN" NOTES.
5. ALL SHOP DRAWINGS, DETAILS AND COMPUTATIONS SUBMITTED FOR THIS CONTRACT SHALL BE IN U.S. CUSTOMARY UNITS.

TOWN OF AMHERST
TOWN FACILITY/PARK
5583 MAIN STREET
WILLAMSVILLE, NY 14221
PHONE: (716) 631-7051



EVERGREEN PARK (75 TUPELO LANE)

PROJECT NOTES

FIELD CREW:

DRAWN BY:

JOB NO.

CHECKED BY:

CHECKED BY:

SCALE: NTS

DATE:

REVISIONS

BY	DATE

DWG. NO.

D3

SHT. NO. 10 OF 10