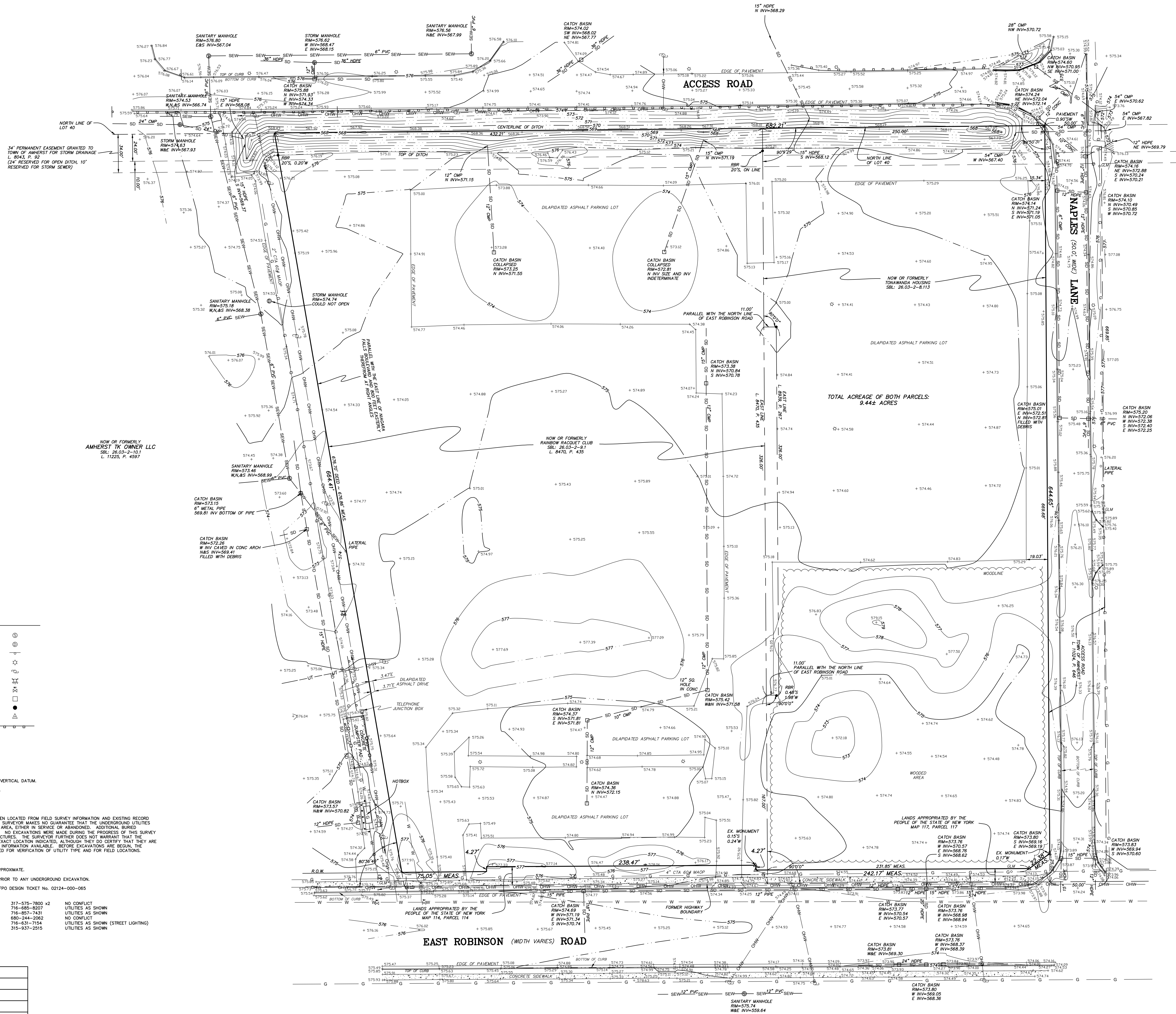


NOTE: THIS SURVEY WAS PREPARED WITHOUT THE BENEFIT OF AN ABSTRACT OF TITLE.
 • SET OR EX. 5/8" REBAR

NOTE: UNAUTHORIZED ALTERATION OR ADDITION TO THIS DOCUMENT IS A VIOLATION OF SECTION 7209 PROVISION 2 OF THE NEW YORK STATE EDUCATION LAW.



LEGEND

- SANITARY MANHOLE
- STORM MANHOLE
- SIGN
- LIGHT POLE
- UTILITY POLE
- FIRE HYDRANT
- WATER VALVE
- CATCH BASIN
- BOLLARD
- CONCRETE MONUMENT
- GUARDRAIL

1. VERTICAL CONTROL BASED UPON NAVD 88 VERTICAL DATUM.
2. HORIZONTAL CONTROL GPS DERIVED NAD83.

NOTE:
 THE UNDERGROUND UTILITIES SHOWN HAVE BEEN LOCATED FROM FIELD SURVEY INFORMATION AND EXISTING RECORD DRAWINGS PROVIDED TO THE SURVEYOR. THE SURVEYOR MAKES NO GUARANTEE THAT THE UNDERGROUND UTILITIES SHOWN COMPRISE ALL SUCH UTILITIES IN THE AREA, EITHER IN SERVICE OR ABANDONED. ADDITIONAL BURIED UTILITIES/STRUCTURES MAY BE ENCOUNTERED. NO EXCAVATIONS WERE MADE DURING THE PROGRESS OF THIS SURVEY TO SUBSTANTIATE BURIED UTILITIES AND STRUCTURES. THE SURVEYOR FURTHER DOES NOT WARRANT THAT THE UNDERGROUND UTILITIES SHOWN ARE IN THE EXACT LOCATION INDICATED, ALTHOUGH THEY DO CERTIFY THAT THEY ARE LOCATED AS ACCURATELY AS POSSIBLE FROM INFORMATION AVAILABLE. BEFORE EXCAVATIONS ARE BEGUN, THE APPROPRIATE AGENCIES SHOULD BE CONTACTED FOR VERIFICATION OF UTILITY TYPE AND FOR FIELD LOCATIONS.

UNDERGROUND LOCATION OF UTILITIES ARE APPROXIMATE.
 CONTACT "ONE CALL" AT 1-800-962-7962 PRIOR TO ANY UNDERGROUND EXCAVATION.
 THE FOLLOWING COMPANIES RESPONDED TO UPFD DESIGN TICKET NO. 02124-000-065

CHARTER COM NORTHEAST WESTERN NY	317-575-7800 x2	NO CONFLICT UTILITIES AS SHOWN
ERE COUNTY WATER AUTHORITY	716-885-8207	UTILITIES AS SHOWN
NATIONAL FUEL GAS TONAWANDA - NYC104	716-857-7431	NO CONFLICT UTILITIES AS SHOWN
NATIONAL GRID / WEST / ELECTRIC	680-244-2062	UTILITIES AS SHOWN (STREET LIGHTING)
TOWN OF AMHERST	716-631-7154	UTILITIES AS SHOWN
VERIZON BUFFALO	315-937-2515	UTILITIES AS SHOWN

DATE	REVISION/TYPE

BOUNDARY & TOPOGRAPHIC SURVEY
 PART OF LOT 40, TOWNSHIP 12, RANGE 7
 HOLLAND LAND COMPANY'S SURVEY
 TOWN OF AMHERST, ERIE COUNTY, NEW YORK

GPI ENGINEERING, LANDSCAPE ARCHITECTURE & SURVEYING, LLP
 ENGINEERING • SURVEYING • LANDSCAPE ARCHITECTURE
 4850 GENESSEE STREET, SUITE 100
 BUFFALO, NEW YORK 14225
 (716) 633-4844 FAX 633-4940

Job No. 6325 Date: FEBRUARY 12, 2024
 Scale: 1" = 40' TAX NO. 26.03-2-8.113 & 9.1