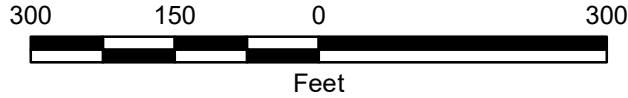


# TOWN OF AMHERST

## Erie County, New York

### Sidewalk Snow Relief Program

#### District 22985 - Zone #5



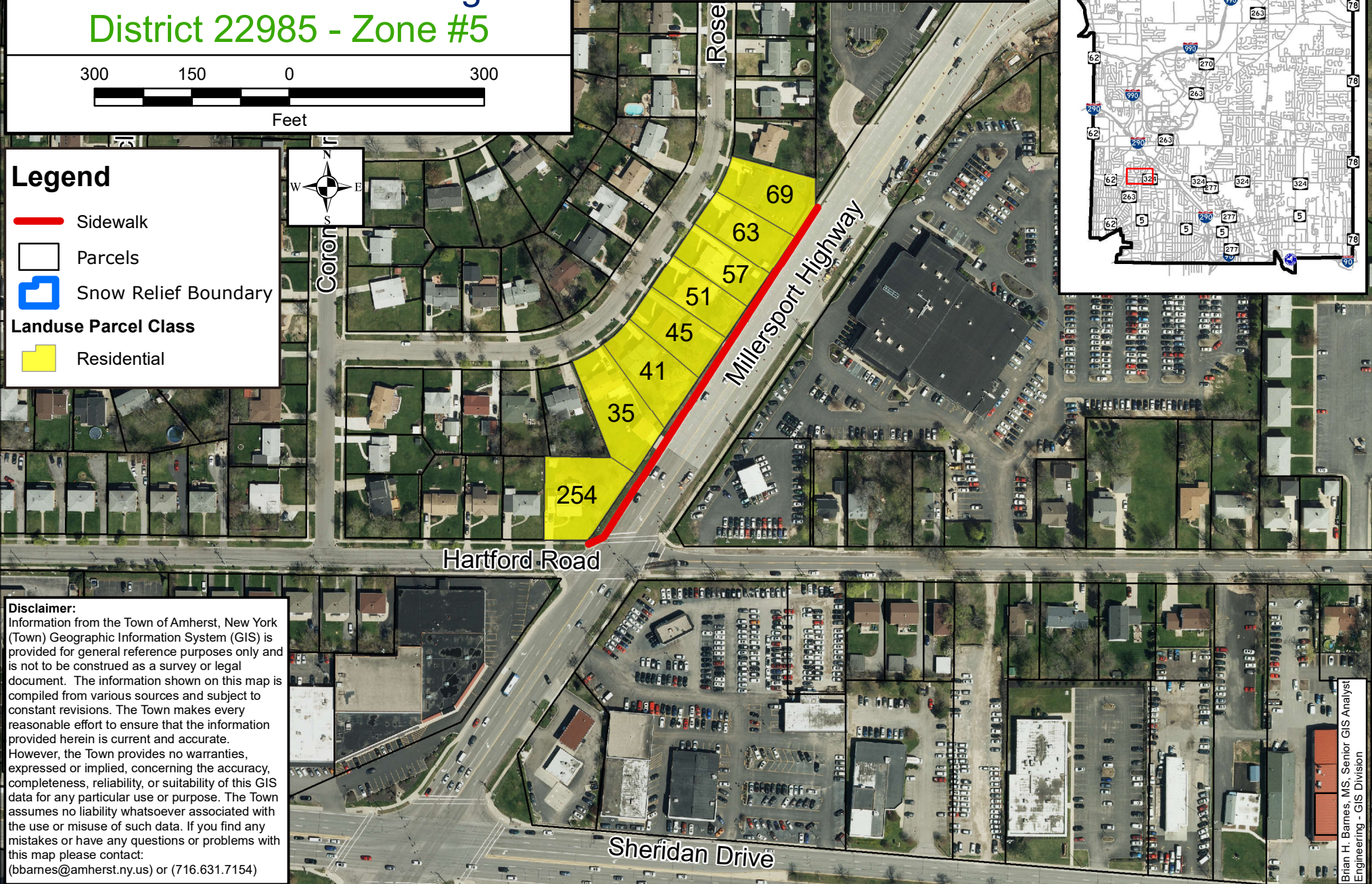
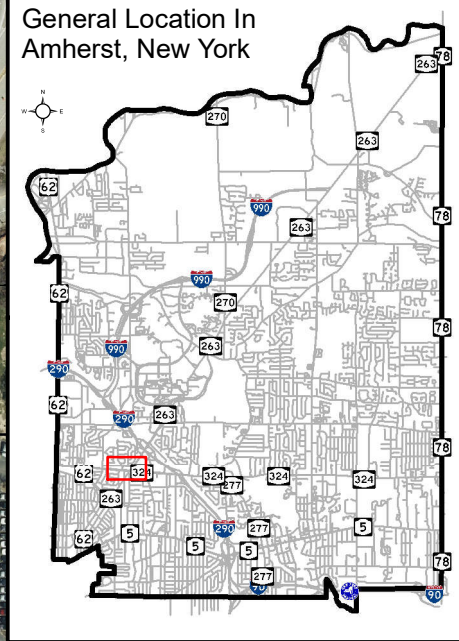
### Legend

- Sidewalk
- Parcels
- Snow Relief Boundary
- Landuse Parcel Class**
- Residential



**For Further Information:**  
Visit the Sidewalk Snow Relief Program on our Town website at [www.amherst.ny.us](http://www.amherst.ny.us) (keyword "sidewalk")

Or contact one of the following departments by phone:  
Highway Department: (716.631.5990)  
Supervisors Office: (716.631.7032)



**Disclaimer:**  
Information from the Town of Amherst, New York (Town) Geographic Information System (GIS) is provided for general reference purposes only and is not to be construed as a survey or legal document. The information shown on this map is compiled from various sources and subject to constant revisions. The Town makes every reasonable effort to ensure that the information provided herein is current and accurate. However, the Town provides no warranties, expressed or implied, concerning the accuracy, completeness, reliability, or suitability of this GIS data for any particular use or purpose. The Town assumes no liability whatsoever associated with the use or misuse of such data. If you find any mistakes or have any questions or problems with this map please contact: (bbarnes@amherst.ny.us) or (716.631.7154)

Brian H. Barnes, MS, Senior GIS Analyst  
Engineering - GIS Division